



Statistical Publication

Inmate Statistics
(Weekly States)
July 1999 to June 2000

Sylviane Mariasson & Simon Eyland

Statistical Publication No.21
September 2000
ISSN 0814 1215

NSW Department of Corrective Services

Statistical Publication No. 21
ISSN 0814 1215

© NSW Department of Corrective Services

Research and Statistics Unit,
NSW Department of Corrective Services,
GPO Box 31
Sydney NSW 2001
AUSTRALIA
Telephone: + 61 2 9289 1556
Facsimile: + 61 2 9289 1590
Email: enquiries.nswdcs@a1.com.au
Website address: <http://www.dcs.nsw.gov.au>

TABLE OF CONTENTS

Acknowledgements	ii
Introduction	1
Highlights	3
Daily average number of inmates in NSW	7
Annual Trends in the inmate population 1974 - 2000	8
Trends in the inmate population 1974 - 2000	9
Inmates in full-time custody and periodic detention warrants	10
Number of unsentenced inmates in full-time custody	12
Number of sentenced inmates in full-time custody	14
Sex of inmates in full-time custody	16
Periodic detainees - Total warrants and number attending	18
Classification of institution in which inmates are held	20
Number of appellants in full-time custody	22
Number of inmates on segregation and protection	24
Number of fine defaulters in full-time custody	26
Number of unsentenced inmates less appellant	28
Profile on last Sunday of June 2000	29
Institutional security - percentage on last Sunday of June 2000	31
Periodic Detainees - Attendance and reasons for non-attendance	32
Weekly states - First Sunday of each month	33

ACKNOWLEDGEMENTS

Many thanks to the Deputy Governors and the Clerks who provided information about their Correctional Centres on a regular basis.

Special thanks to the staff of the Research and Statistics Unit who were involved with the compilation of these statistics: Nicolle Brown and Liang Rugless who collected and collated the information and processed the returns, Barbara Thompson who assisted with the introduction and checked the returns, as well as Margaret Bowery, Antonia Barila, Kyleigh Heggie and Simon Corben who also checked the returns. Thanks also to Rina DeSouza who helped with the distribution of this report.

INTRODUCTION

This is the Thirteenth annual collection of inmate statistics derived from the Weekly States reports. The "Weekly States" is a statistical collection of information about the inmate population of each correctional centre in NSW as at midnight Sunday each week.

As for previous years, the information is categorised in terms of the correctional centre, the sex of the inmate, and whether the inmate is being held under sentence (serving a determinate sentence or life sentence or held as a forensic patient or fine defaulter) or not under sentence (remandee, appellant or deportee). Totals for inmates in full-time custody are separated from periodic detainees. Two counts are provided for periodic detainees: a count of those who actually attended periodic detention during any week; and a count of the number of people with periodic detention orders. There is also an overall count for each of the reasons given for non-attendance as known at that detention period. These are grouped as "reasons known" (in full-time custody on appeal with bail or leave (sick or other) applied for) and absent without leave (no reason given, or legal action pending). Each week's total state is compared with the highest and lowest weekly state in the previous twelve months, as well as with the weekly state of the previous week.

Information on the numbers held on segregation and protection have now been included again in this publication following a solution to difficulties associated with the introduction of the OMS. The number of appellants is also presented. Accommodation details including a comparison of the design accommodation of the institution with the numbers of inmates held are also provided. Information is also presented on the numbers of fine defaulters (inmates in custody for the sole reason of default of fine) although these numbers are now very low. The numbers held on remand or for trial, the number of fine defaulters, appellants, remands and trials at Junee (the state's only private prison) are also shown.

The "Weekly States" is, as the name implies, issued on a weekly basis. The purpose of this annual collection is to present information from these Weekly States statistical reports in a more convenient format to facilitate those interested in examining trends.

Tables and graphs portraying weekly totals of:

- full-time custody versus periodic detainees;
- sentenced versus unsentenced;
- males versus females;
- male periodic detainees versus female periodic detainees;
- those held in maximum versus medium versus minimum security institutions;
- appellants;
- inmates held under segregation or protection;
- fine defaulters

for each Sunday in the 1999/2000 financial year are provided in this publication. In addition, individual Weekly States reports for the first Sunday in each month as well as the last Sunday in the financial year are reproduced. To place the 1999/2000 figures in context, a summary of NSW inmate population trends since 1974 is also provided.

The information in this publication replaces any figures previously released.

HIGHLIGHTS:

The 1999/2000 daily average of 7272 inmates in full-time custody was 437 higher than for 1998/99 (6835) which was, in turn 493 higher than for 1997/98 (6342).

This continuing rise in the daily average for 1999/2000 (+6.4%) builds on a rapid rise in numbers of inmates in full-time custody from around early May 1998.

There has been a dramatic rise in the number of full-time inmates of 876 during the period June 1998 to June 2000. This approximately 14% increase is similar to that experienced in the rapid expansion in inmate numbers that occurred following the introduction of the NSW Sentencing Act, 1989. Inmate numbers had remained at a fairly level plateau for five to six years following the introduction of this "Truth in Sentencing" legislation only to experience this very rapid increase from May 1998. The rapid increase in numbers since mid 1998 has now plateaued out for both men and women.

This increase is also reflected in the difference between the highest and lowest weekly states numbers encountered during 1999/2000 - a difference of 309 inmates. This is equivalent to the capacity of a medium sized correctional centre.

The rapid increase in numbers was experienced over the last three years by both male and female inmates in full-time custody although the female rate was over double the male rate. The unsentenced inmate population increased at a very high rate compared to the sentenced population over the last year.

The number of inmates on segregation and protection have now been included in this weekly states yearly publication. The number of inmates in segregation fluctuated between 55 and 105 over the last year with the numbers being lower towards the end of the financial year.

The number of inmates on protection also fluctuated during the year. These numbers ranged from a high of 1317 to a low of 1206 with the numbers on protection demonstrating a slow growth over the last year.

It should be noted that more inmates are being kept in minimum security accommodation because of the opening of minimum accommodation at Brewarrina (15 May 2000) and Ivanhoe (19 September 1999 as a work camp). In addition, female detainees were moved to Norma Parker, allowing the old Emu Plains Periodic Detention Centre to be used for full-time inmates.

Changes in the size of various components of the inmate population in recent years
Number present on last Sunday of financial year

	2000 25/6/00	1999 27/6/99	1998 28.6.98	3 years earlier 29/6/97	4 years earlier 30/6/96	5 years earlier 25.6.95
Full-time custody	7328	7240	6452	6374	6261	6407
Unsentenced (including appellants)	2098	1862	1451	1272	1278	1201
Sentenced	5230	5378	5001	5102	4983	5206
Males	6868	6802	6095	6031	5925	6098
Females	460	438	357	343	336	309
Maximum Security ⁽¹⁾ #	2471	2518	2164	1784	1532	1668
Medium Security ⁽¹⁾	1559	1585	1223	1627	1757	1763
Minimum Security ⁽¹⁾	3298	3137	3065	2962	2972	2976
Juveniles	1	0	0	0	1	0
Appellants	577	566	415	332	473	463
P.D.C.	1247	1257	1396	1622	1518	1409
Male P.D.C.	1140	1145	1282	1492	1414	1309
Female P.D.C.	107	112	114	130	104	100

(1) These figures refer to the security classifications of the institutions in which the inmates were held. They do not refer to individual inmate security classifications.

NOTE: All inmates at Parklea (complex of minimum, medium and maximum security) except those in the minimum security work release centre and all inmates at Mulawa are counted as medium security.

The increase in the maximum security population between 1996/97 and 1997/98 was mainly the result of the closure of the medium security Parramatta Correctional Centre and the opening of the maximum security Metropolitan remand and Reception Centre. During the following years Parramatta was reopened on 30/11/98 as minimum, part of Cessnock changed from minimum to maximum, various wings at Long Bay, Mulawa, Parklea (maximum, medium, minimum) were reopened and Periodic Detention accommodation at long Bay and Silverwater (minimum security) was reclassified for full-time inmates. During 1999/2000 minimum security centres at Brewarrina and Ivanhoe were opened.

Percentage change in various components of the inmate population in recent years

	<i>Change in past year 27/6/1999 - 25/6/2000</i>	<i>Change in past 3 years 29/6/1997 - 25/6/2000</i>	<i>Change in past 5 years 27/6/1995 - 25/6/2000</i>
Full-time custody	+1.2%	+15.0%	+14.4%
Unsentenced (including appellants)	+12.7%	+65.0%	+74.7%
Sentenced	-2.8%	+2.5%	+0.5%
Males	+1.0%	+13.9%	+12.6%
Females	+5.0%	+34.1%	+48.9%
Maximum Security ^{(1) #}	-1.9%	+38.5%	+48.1%
Medium Security ⁽¹⁾	-1.6%	-4.2%	-11.6%
Minimum Security ⁽¹⁾	+5.3%	+11.3%	+10.8%
Appellants	+31.4%	-73.8%	+24.6%
P.D.C.	-0.8%	-23.1%	-11.5%
Male P.D.C.	-0.4%	-23.6%	-12.9%
Female P.D.C.	-4.5%	-17.7%	-7.0%

(1) These figures refer to the security classifications of the institutions in which the inmates were held. They do **not** refer to individual inmate security classifications.

NOTE: All inmates at Parklea (complex of minimum, medium and maximum security) except those in the minimum security work release centre and all inmates at Mulawa are counted as medium security.

The increase in the maximum security population between 1996/97 and 1997/98 was mainly the result of the closure of the medium security Parramatta Correctional Centre and the opening of the maximum security Metropolitan remand and Reception Centre. During the following years Parramatta was reopened on 30/11/98 as minimum, part of Cessnock changed from minimum to maximum, various wings at Long Bay, Mulawa, Parklea (maximum, medium, minimum) were reopened and Periodic Detention accommodation at long Báy and Silverwater (minimum security) was reclassified for full-time inmates. During 1999/2000 minimum security centres at Brewarrina and Ivanhoe were opened.

Annual Trends in the Inmate Population since 1974 to 2000

Year Ending 30 June	Daily Average ¹	Rate per 100,000 NSW Population ²	% Change in average from last year	Lowest Weekly State ³	Highest Weekly State ³	Difference between Lowest and Highest weekly state	
						No.	% of Average
1974	3348	68.8	- 18.9%	2988	3854	866	25.9%
1975	3318	67.5	- 0.9%	3015	3405	390	11.8%
1976	3587	72.5	+ 8.1%	3373	3637	264	7.4%
1977	3547	71.2	- 1.1%	3462	3605	143	4.0%
1978	3645	72.5	+ 2.8%	3326	3808	482	13.2%
1979	3858	75.9	+ 5.8%	3749	3952	203	5.3%
1980	3677	71.5	- 4.7%	3453	3885	432	11.7%
1981	3398	65.3	- 7.6%	3208	3546	338	9.9%
1982	3549	67.3	+ 4.4%	3471	3699	228	6.4%
1983	3511	65.8	- 1.1%	3408	3605	197	5.6%
1984	3518	65.3	+ 0.2%	2948	3851	903	25.7%
1985	3473	63.8	- 1.3%	3034	3862	828	23.8%
1986	3854	70.1	+ 11.0%	3767	3943	176	4.6%
1987	3971	71.3	+ 3.0%	3668	4210	542	13.6%
1988	4124	72.9	+ 3.9%	3925	4271	346	8.4%
1989	4358	75.9	+ 5.7%	4187	4742	555	12.7%
1990	5002	86.3	+ 14.8%	4722	5457	735	14.7%
1991	5712	97.4	+ 14.2%	5521	5956	435	7.6%
1992	6056	102.1	+ 6.0%	5940	6201	261	4.3%
1993	6181	103.3	+ 2.1%	5995	6405	410	6.6%
1994	6423	106.6	+ 3.9%	6255	6526	271	4.2%
1995	6279	103.1	- 2.2%	6110	6432	322	5.1%
1996	6290	101.9	+ 0.1%	6142	6424	282	4.5%
1997	6314	101.3	+ 0.4%	6206	6409	203	3.2%
1998	6342	100.6	+ 0.4%	6216	6452	236	3.7%
1999	6835	106.9 ⁴	+7.8%	6475	7240	765	11.2%
2000	7272	112.7 ⁴	+6.4%	7107	7416	309	4.2%

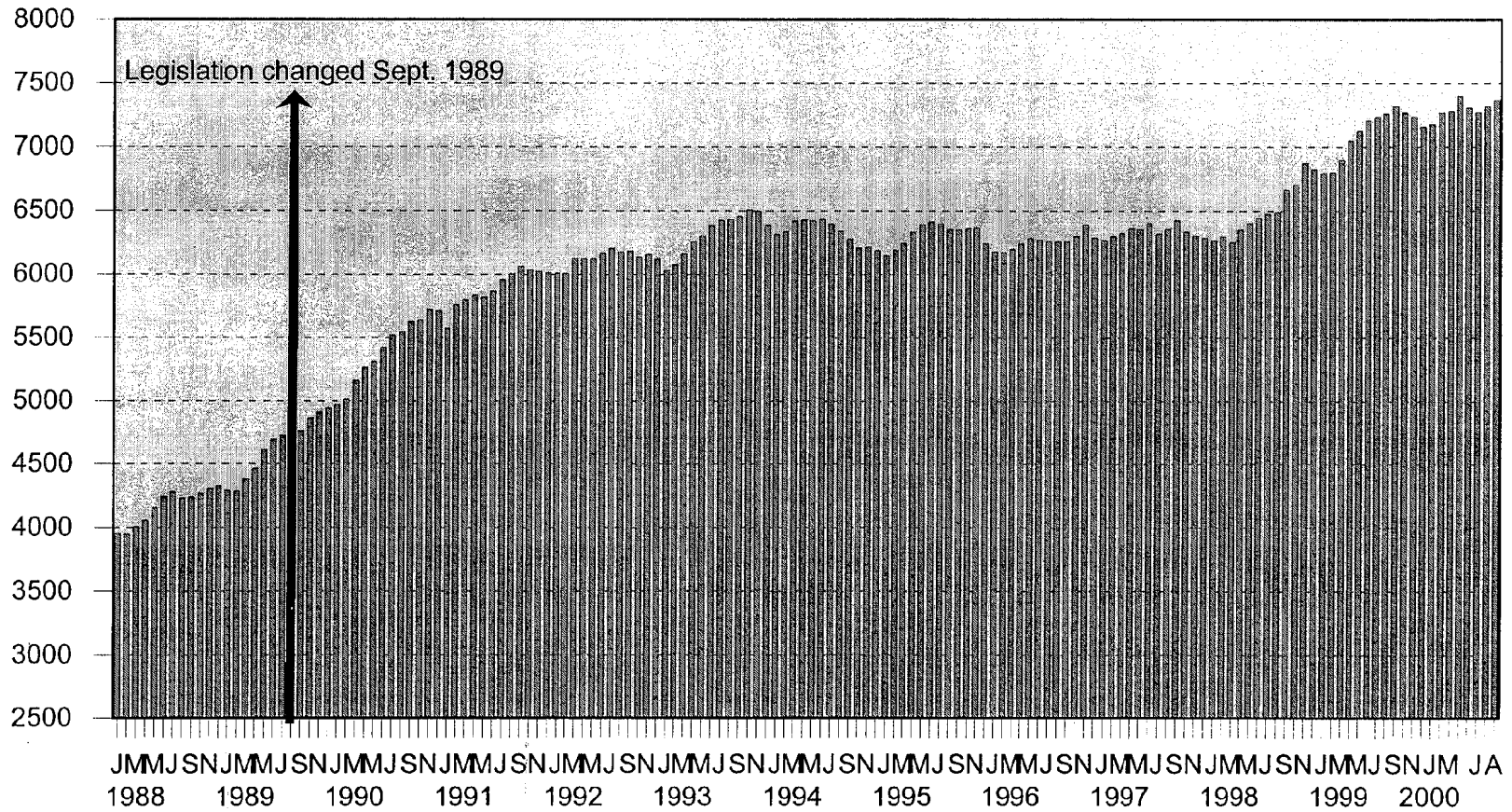
(1) Excluding the number in Periodic Detention.

(2) Based on Australian Bureau of Statistics estimates of the mean resident population of New South Wales for the relevant financial year (Catalogue No. 3101.0).

(3) Taken at midnight each Sunday, excluding Periodic Detainees.

(4) Preliminary figures.

Daily Average Number of Inmates in NSW Correctional Centres (excludes Periodic Detainees) January 1988 to August 2000

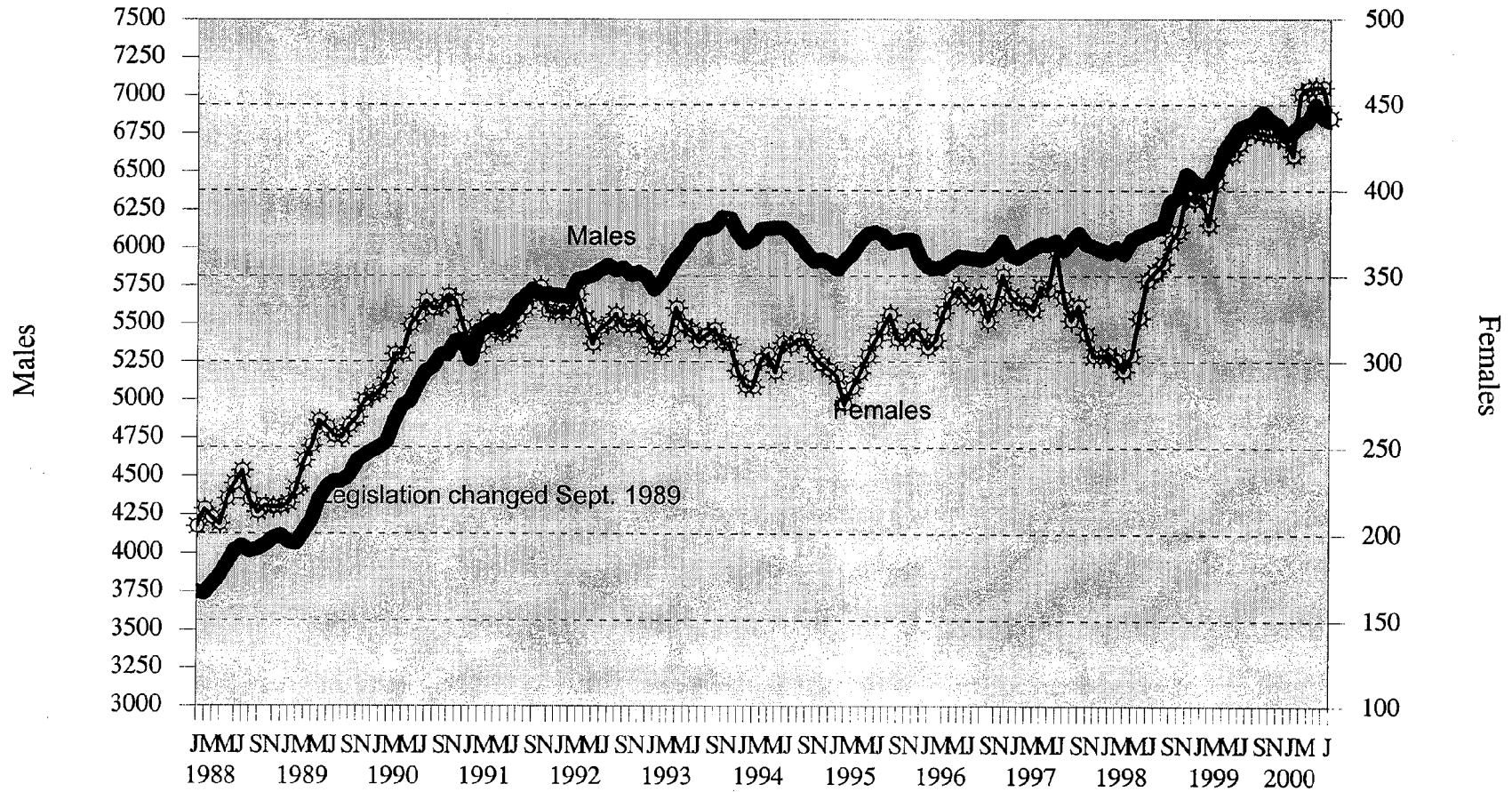


Research & Statistics, NSW Department of Corrective Services.

Source: Supplied on weekly basis from Correctional Centres up to May 1997. Data drawn from OMS from June 1997 onwards.

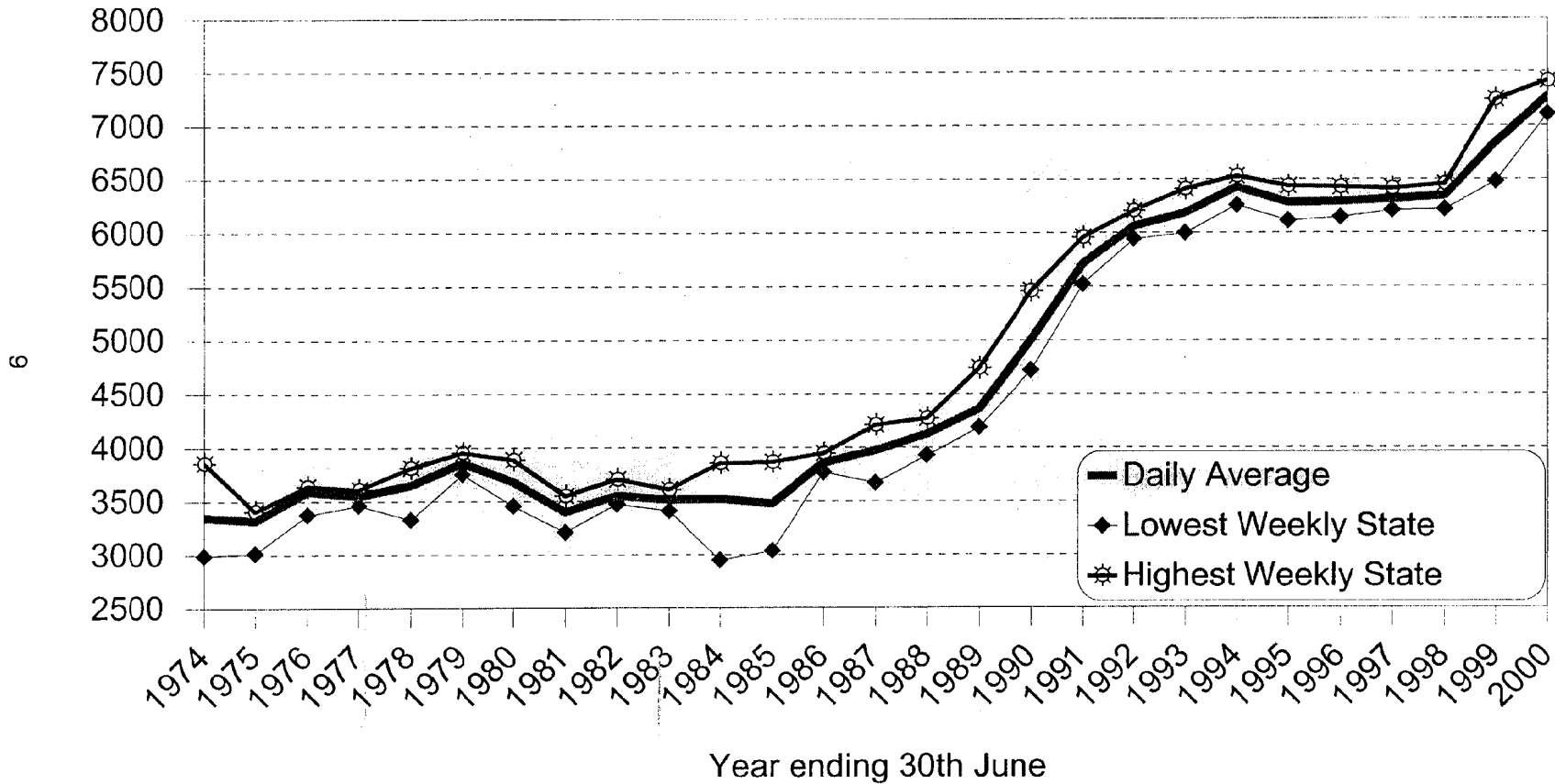
Daily Average Number of Inmates in NSW Correctional Centres (excludes Periodic Detainees) January 1988 to June 2000

8



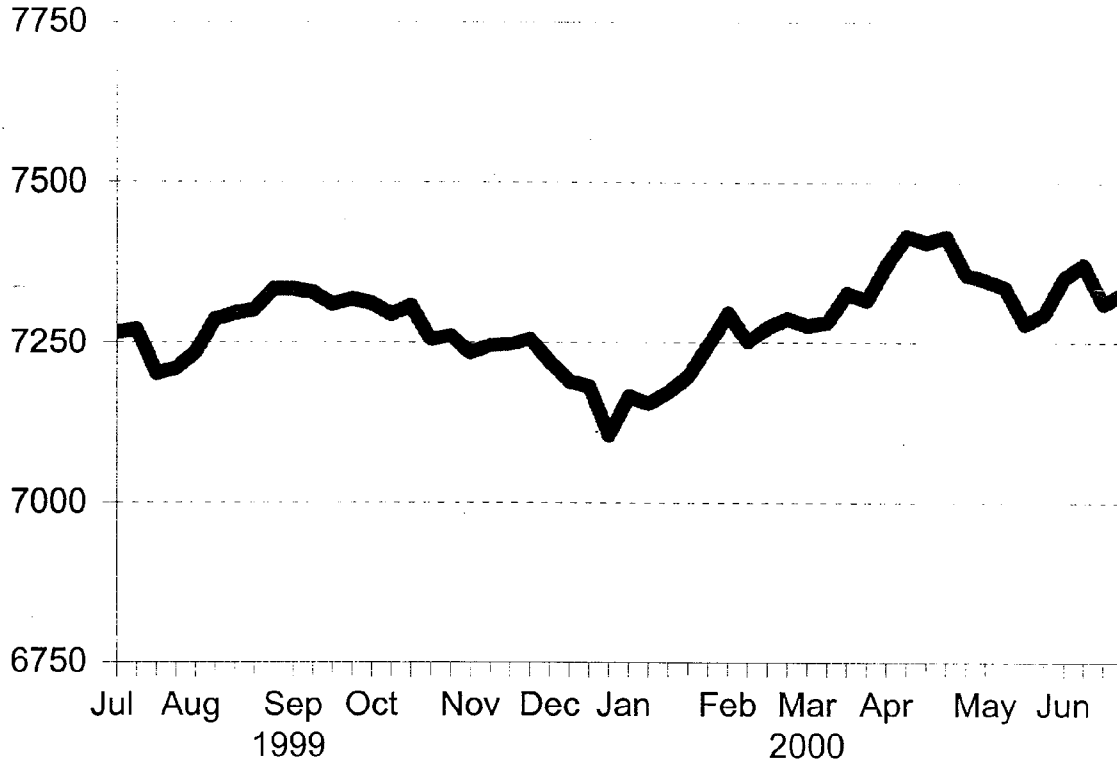
Research & Statistics, NSW Department of Corrective Services.
Source: Supplied on weekly basis from Correctional Centres

Trends in the Inmate Population 1974 to 2000

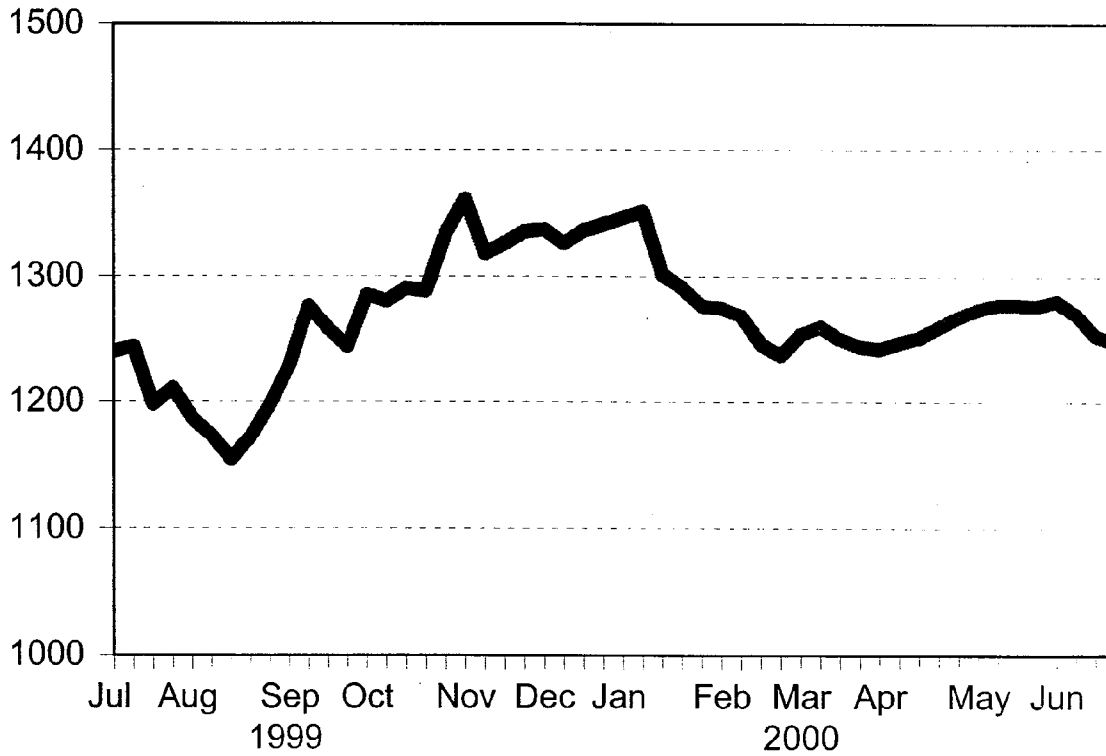


Research & Statistics, NSW Department of Corrective Services.

Inmates in Full-time Custody



People with Periodic Detention Warrants



Research & Statistics, NSW Department of Corrective Services

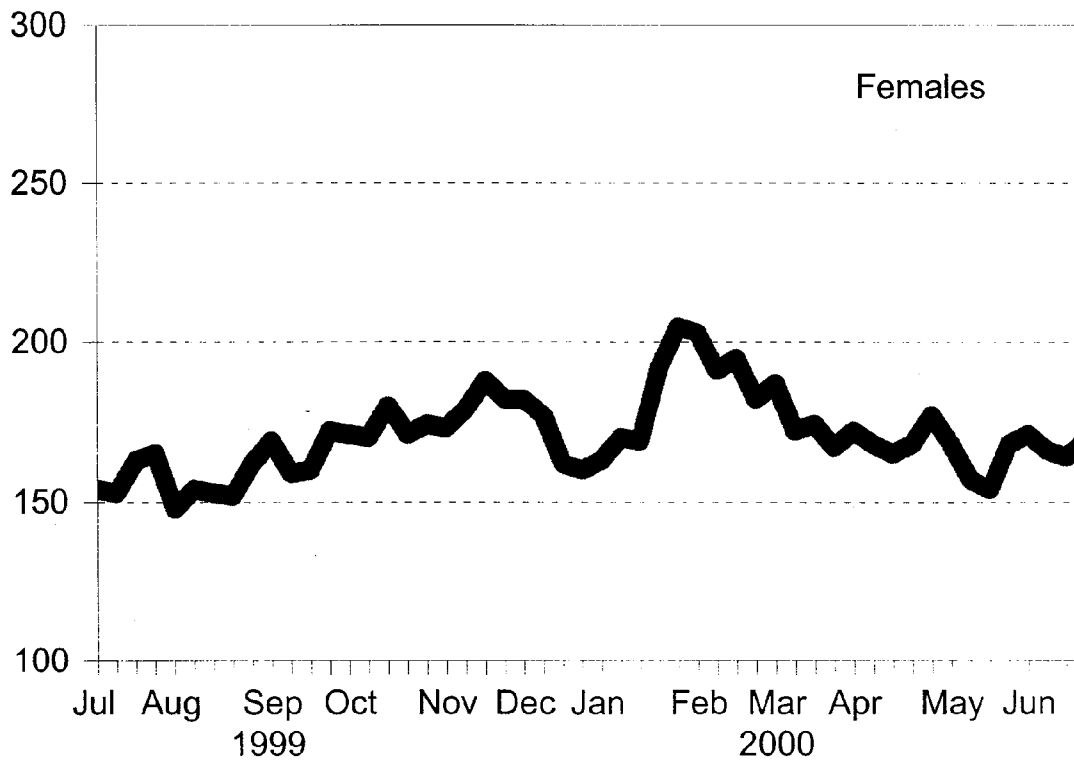
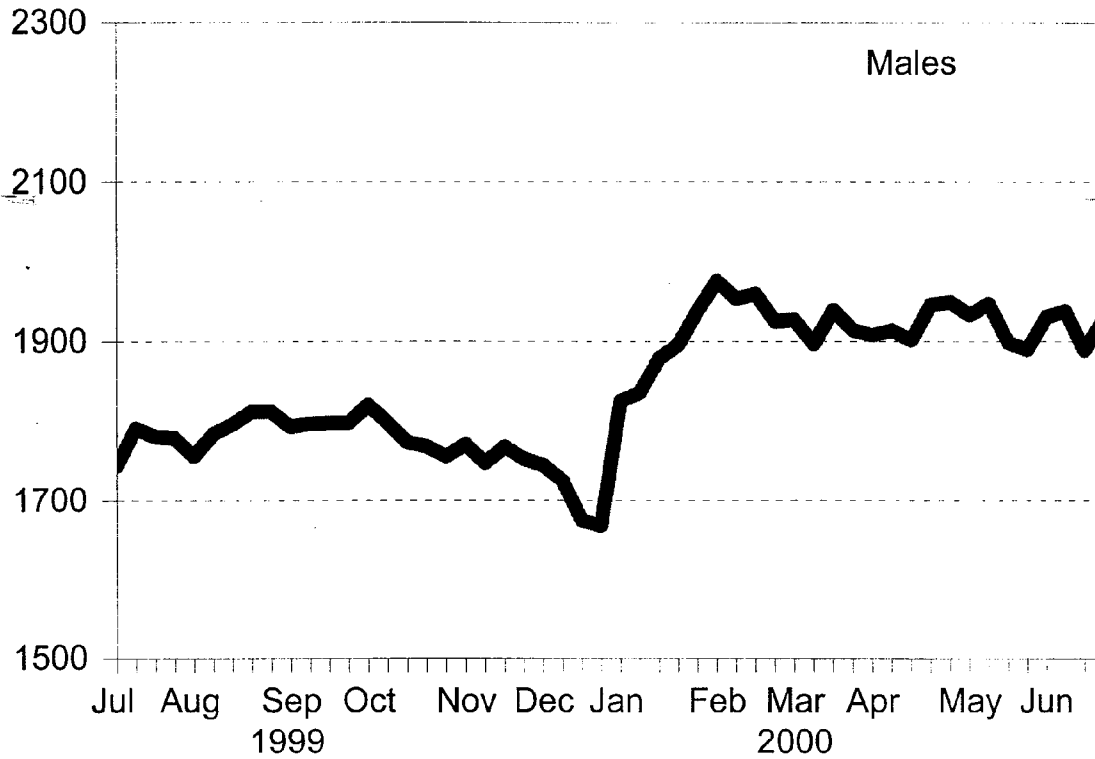
Weekly States July 1999 - June 2000
Inmates in Full-time Custody and Periodic Detention Warrants

Date	Full-time Custody	Periodic Detainees	Total Inmates & Detainees	Date	Full-time Custody	Periodic Detainees	Total Inmates & Detainees
4 Jul 1999	7267	1240	8507	2 Jan 2000	7167	*	*
11 Jul 1999	7272	1244	8516	9 Jan 2000	7156	1351	8507
18 Jul 1999	7202	1198	8400	16 Jan 2000	7174	1302	8476
25 Jul 1999	7210	1211	8421	23 Jan 2000	7198	1292	8490
1 Aug 1999	7234	1187	8421	30 Jan 2000	7246	1277	8523
8 Aug 1999	7287	1173	8460	6 Feb 2000	7297	1275	8572
15 Aug 1999	7296	1154	8450	13 Feb 2000	7252	1269	8521
22 Aug 1999	7302	1172	8474	20 Feb 2000	7275	1246	8521
29 Aug 1999	7334	1198	8532	27 Feb 2000	7289	1237	8526
5 Sep 1999	7334	1229	8563	5 Mar 2000	7278	1254	8532
12 Sep 1999	7329	1277	8606	12 Mar 2000	7283	1260	8543
19 Sep 1999	7311	1258	8569	19 Mar 2000	7328	1250	8578
26 Sep 1999	7318	1244	8562	26 Mar 2000	7317	1244	8561
3 Oct 1999	7312	1286	8598	2 Apr 2000	7372	1242	8614
10 Oct 1999	7295	1281	8576	9 Apr 2000	7416	1247	8663
17 Oct 1999	7308	1291	8599	16 Apr 2000	7406	1251	8657
24 Oct 1999	7255	1289	8544	23 Apr 2000	7415	*	*
31 Oct 1999	7261	1334	8595	30 Apr 2000	7357	1268	8625
7 Nov 1999	7234	1361	8595	7 May 2000	7348	1274	8622
14 Nov 1999	7246	1318	8564	14 May 2000	7337	1278	8615
21 Nov 1999	7248	1326	8574	21 May 2000	7280	1278	8558
28 Nov 1999	7256	1335	8591	28 May 2000	7296	1277	8573
5 Dec 1999	7220	1337	8557	4 Jun 2000	7352	1281	8633
12 Dec 1999	7190	1326	8516	11 Jun 2000	7372	1270	8642
19 Dec 1999	7182	1336	8518	18 Jun 2000	7312	1253	8565
26 Dec 1999	7107	*	*	25 Jun 2000	7328	1247	8575

* Periodic Detention Centres closed over Christmas New year and Easter.

Number of Unsentenced Inmates in Full-time Custody

("Unsentenced" includes: Remands, Trials, Appellants and Deportees)



Research & Statistics, NSW Department of Corrective Services

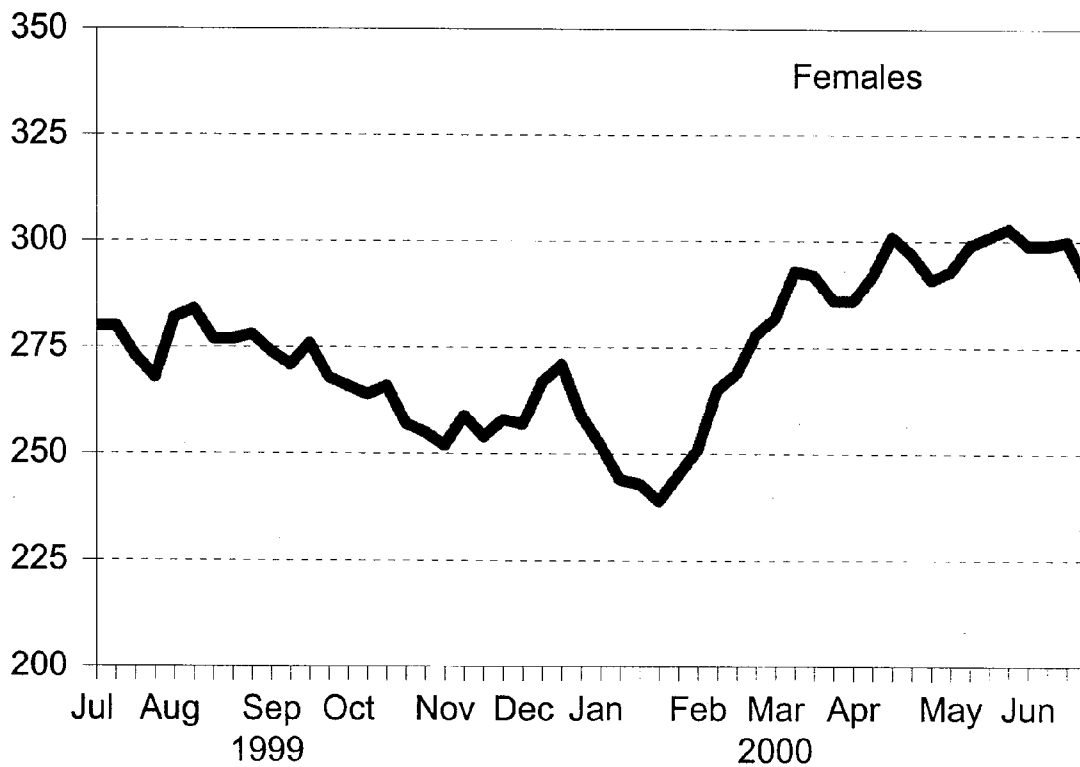
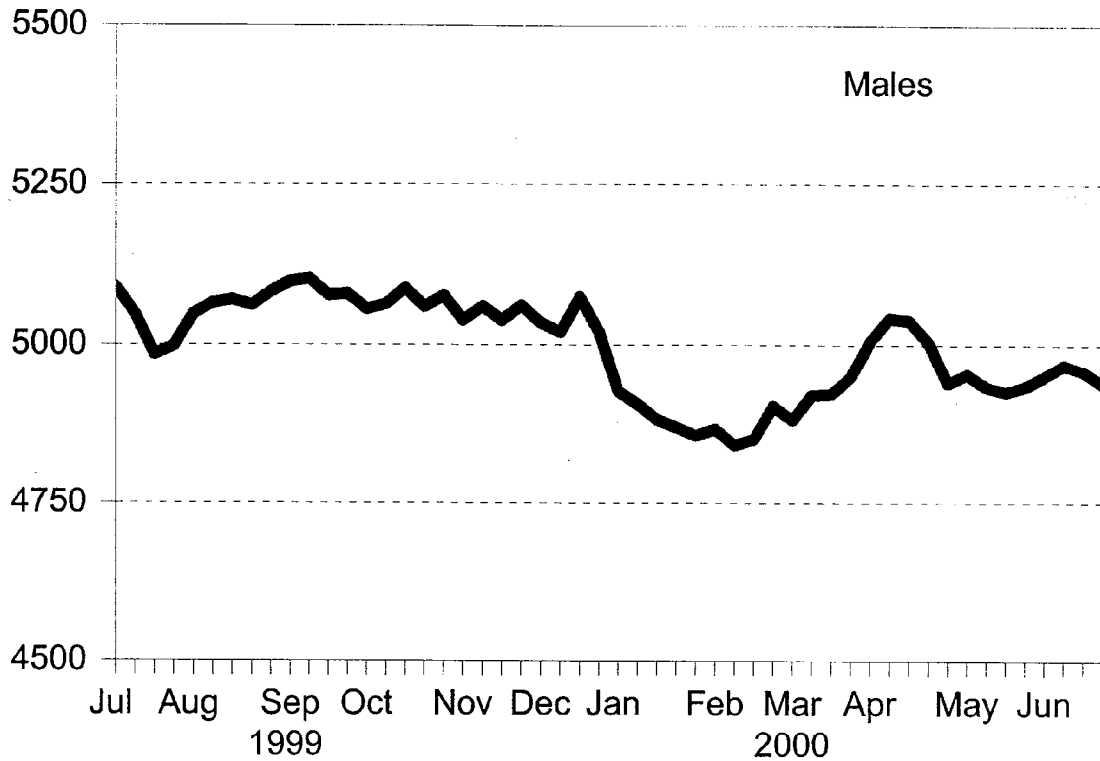
Weekly States July 1999 - June 2000
Status of Inmates in Full-time Custody

Date	Unsentenced* Inmates			Sentenced # Inmates			Total Inmates
	Male	Female	Total Unsentenced Inmates	Male	Female	Total Sentenced Inmates	
4 Jul 1999	1744	154	1898	5089	280	5369	7267
11 Jul 1999	1791	153	1944	5048	280	5328	7272
18 Jul 1999	1781	163	1944	4985	273	5258	7202
25 Jul 1999	1779	165	1944	4998	268	5266	7210
1 Aug 1999	1756	148	1904	5048	282	5330	7234
8 Aug 1999	1784	154	1938	5065	284	5349	7287
15 Aug 1999	1796	153	1949	5070	277	5347	7296
22 Aug 1999	1812	152	1964	5061	277	5338	7302
29 Aug 1999	1812	162	1974	5082	278	5360	7334
5 Sep 1999	1793	169	1962	5098	274	5372	7334
12 Sep 1999	1797	159	1956	5102	271	5373	7329
19 Sep 1999	1798	160	1958	5077	276	5353	7311
26 Sep 1999	1798	173	1971	5079	268	5347	7318
3 Oct 1999	1820	171	1991	5055	266	5321	7312
10 Oct 1999	1798	170	1968	5063	264	5327	7295
17 Oct 1999	1774	180	1954	5088	266	5354	7308
24 Oct 1999	1768	171	1939	5059	257	5316	7255
31 Oct 1999	1756	174	1930	5076	255	5331	7261
7 Nov 1999	1771	173	1944	5038	252	5290	7234
14 Nov 1999	1748	179	1927	5060	259	5319	7246
21 Nov 1999	1768	188	1956	5038	254	5292	7248
28 Nov 1999	1753	184	1937	5061	258	5319	7256
5 Dec 1999	1745	184	1929	5034	257	5291	7220
12 Dec 1999	1726	177	1903	5020	267	5287	7190
19 Dec 1999	1675	162	1837	5074	271	5345	7182
26 Dec 1999	1668	160	1828	5020	259	5279	7107

*"Unsentenced" includes remands, trials, appellants and deportees

"Sentenced" includes sentenced to term imprisonment, life sentence, forensic patient and fine defaulters

Number of Sentenced Inmates in Full-time Custody ("Sentenced" includes: Fine Defaulters, Lifes, and Forensic Patients)



Research & Statistics, NSW Department of Corrective Services

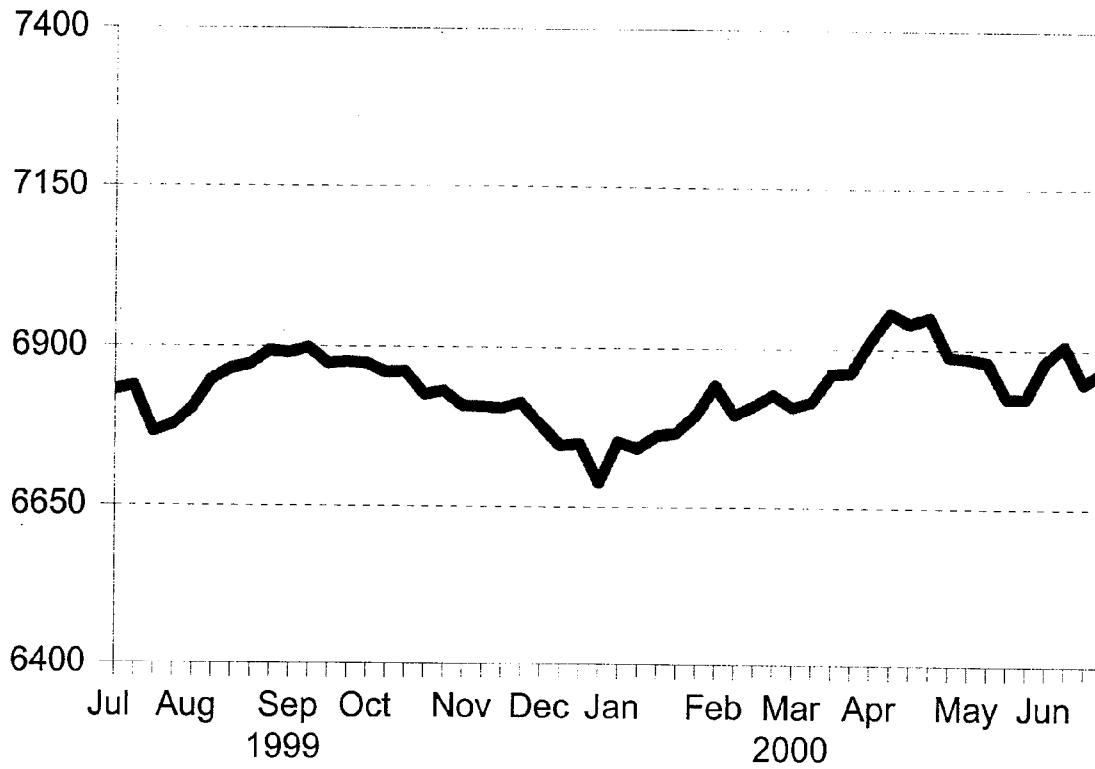
Weekly States July 1999 - June 2000
Status of Inmates in Full-time Custody

Date	Unsentenced * Inmates			Sentenced # Inmates			Total Inmates
	Male	Female	Total Unsentenced Inmates	Male	Female	Total Sentenced Inmates	
2 Jan 2000	1825	163	1988	4927	252	5179	7167
9 Jan 2000	1835	170	2005	4907	244	5151	7156
16 Jan 2000	1879	169	2048	4883	243	5126	7174
23 Jan 2000	1896	192	2088	4871	239	5110	7198
30 Jan 2000	1938	205	2143	4858	245	5103	7246
6 Feb 2000	1975	203	2178	4868	251	5119	7297
13 Feb 2000	1953	191	2144	4843	265	5108	7252
20 Feb 2000	1959	195	2154	4852	269	5121	7275
27 Feb 2000	1925	182	2107	4904	278	5182	7289
5 Mar 2000	1927	187	2114	4882	282	5164	7278
12 Mar 2000	1897	172	2069	4921	293	5214	7283
19 Mar 2000	1939	174	2113	4923	292	5215	7328
26 Mar 2000	1914	167	2081	4950	286	5236	7317
2 Apr 2000	1908	172	2080	5006	286	5292	7372
9 Apr 2000	1914	168	2082	5042	292	5334	7416
16 Apr 2000	1902	165	2067	5038	301	5339	7406
23 Apr 2000	1946	168	2114	5004	297	5301	7415
30 Apr 2000	1949	177	2126	4940	291	5231	7357
7 May 2000	1933	168	2101	4954	293	5247	7348
14 May 2000	1947	157	2104	4934	299	5233	7337
21 May 2000	1899	154	2053	4926	301	5227	7280
28 May 2000	1890	168	2058	4935	303	5238	7296
4 Jun 2000	1931	171	2102	4951	299	5250	7352
11 Jun 2000	1938	166	2104	4969	299	5268	7372
18 Jun 2000	1889	164	2053	4959	300	5259	7312
25 Jun 2000	1929	169	2098	4939	291	5230	7328

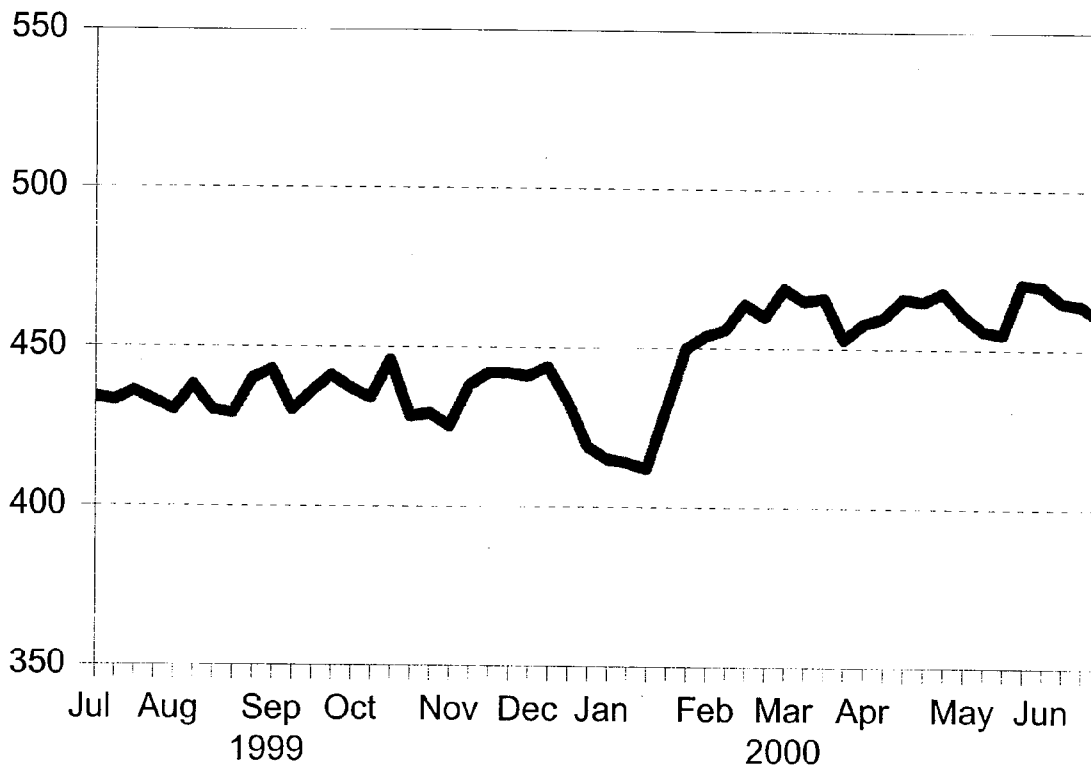
*"Unsentenced" includes remands, trials, appellants and deportees

#"Sentenced" includes sentenced to term imprisonment, life sentence, forensic patient and fine defaulters

Number of Males in Full-time Custody



Number of Females in Full-time custody

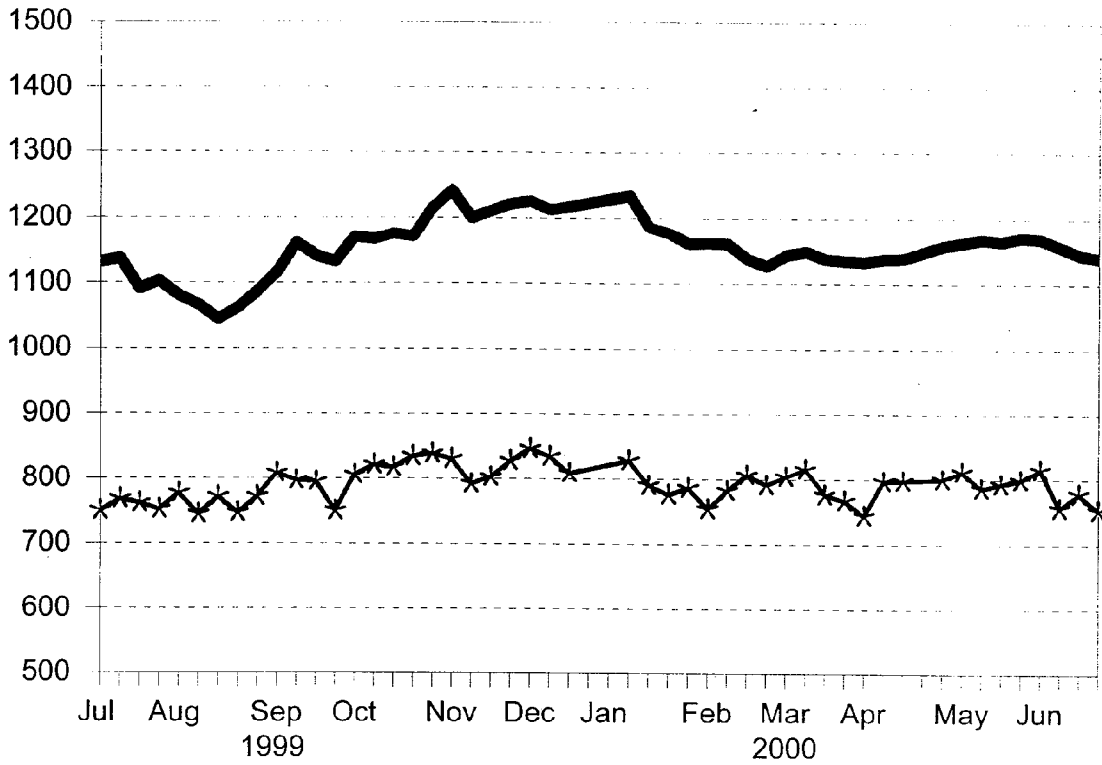


Research & Statistics, NSW Department of corrective Services

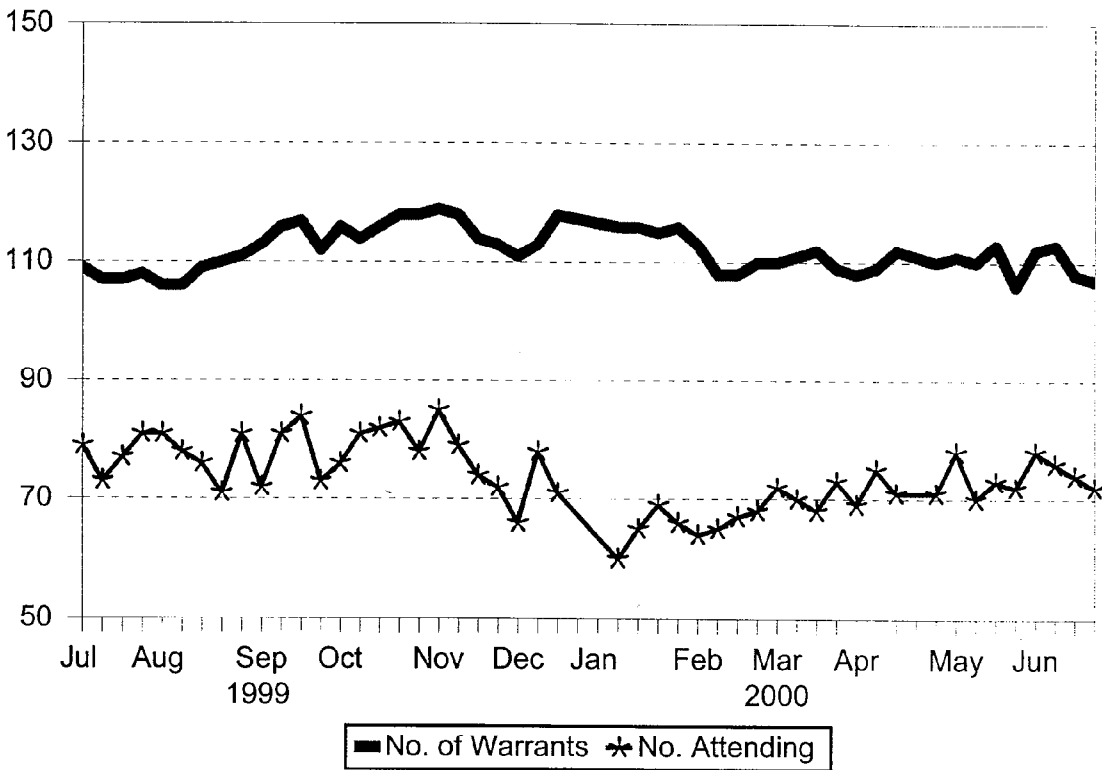
Weekly States July 1999 - June 2000
Sex of Inmates in Full-time Custody

Date	Males Inmates	Females Inmates	Total Inmates	Date	Males Inmates	Females Inmates	Total Inmates
4 Jul 1999	6833	434	7267	2 Jan 2000	6752	415	7167
11 Jul 1999	6839	433	7272	9 Jan 2000	6742	414	7156
18 Jul 1999	6766	436	7202	16 Jan 2000	6762	412	7174
25 Jul 1999	6777	433	7210	23 Jan 2000	6767	431	7198
1 Aug 1999	6804	430	7234	30 Jan 2000	6796	450	7246
8 Aug 1999	6849	438	7287	6 Feb 2000	6843	454	7297
15 Aug 1999	6866	430	7296	13 Feb 2000	6796	456	7252
22 Aug 1999	6873	429	7302	20 Feb 2000	6811	464	7275
29 Aug 1999	6894	440	7334	27 Feb 2000	6829	460	7289
5 Sep 1999	6891	443	7334	5 Mar 2000	6809	469	7278
12 Sep 1999	6899	430	7329	12 Mar 2000	6818	465	7283
19 Sep 1999	6875	436	7311	19 Mar 2000	6862	466	7328
26 Sep 1999	6877	441	7318	26 Mar 2000	6864	453	7317
3 Oct 1999	6875	437	7312	2 Apr 2000	6914	458	7372
10 Oct 1999	6861	434	7295	9 Apr 2000	6956	460	7416
17 Oct 1999	6862	446	7308	16 Apr 2000	6940	466	7406
24 Oct 1999	6827	428	7255	23 Apr 2000	6950	465	7415
31 Oct 1999	6832	429	7261	30 Apr 2000	6889	468	7357
7 Nov 1999	6809	425	7234	7 May 2000	6887	461	7348
14 Nov 1999	6808	438	7246	14 May 2000	6881	456	7337
21 Nov 1999	6806	442	7248	21 May 2000	6825	455	7280
28 Nov 1999	6814	442	7256	28 May 2000	6825	471	7296
5 Dec 1999	6779	441	7220	4 Jun 2000	6882	470	7352
12 Dec 1999	6746	444	7190	11 Jun 2000	6907	465	7372
19 Dec 1999	6749	433	7182	18 Jun 2000	6848	464	7312
26 Dec 1999	6688	419	7107	25 Jun 2000	6868	460	7328

Male Periodic Detainees



Female Periodic Detainees



Note: Periodic Detention Centres were closed over Christmas, New year and Easter.

Research & Statistics, NSW Department of Corrective Services

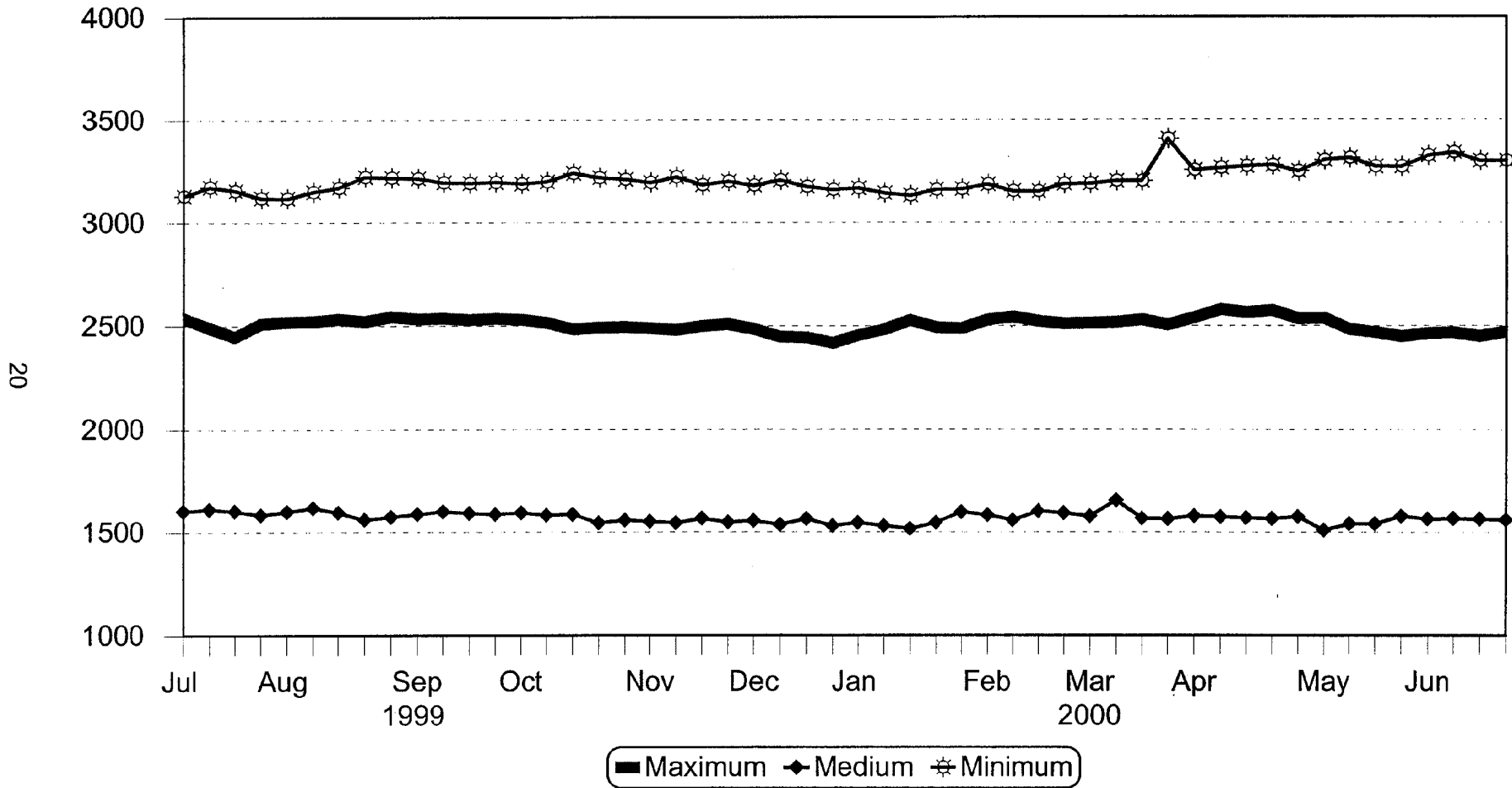
Weekly States July 1999 - June 2000
Periodic Detainees

Date	Orders		No. Attending		Date	Orders		No. Attending	
	M	F	M	F		M	F	M	F
4 Jul 1999	1131	109	750	79	2 Jan 2000	*	*	*	*
11 Jul 1999	1137	107	768	73	9 Jan 2000	1235	116	829	60
18 Jul 1999	1091	107	762	77	16 Jan 2000	1186	116	790	65
25 Jul 1999	1103	108	752	81	23 Jan 2000	1177	115	776	69
1 Aug 1999	1081	106	777	81	30 Jan 2000	1161	116	786	66
8 Aug 1999	1067	106	745	78	6 Feb 2000	1162	113	754	64
15 Aug 1999	1045	109	772	76	13 Feb 2000	1161	108	782	65
22 Aug 1999	1062	110	747	71	20 Feb 2000	1138	108	807	67
29 Aug 1999	1087	111	772	81	27 Feb 2000	1127	110	791	68
5 Sep 1999	1116	113	809	72	5 Mar 2000	1144	110	804	72
12 Sep 1999	1161	116	797	81	12 Mar 2000	1149	111	816	70
19 Sep 1999	1141	117	795	84	19 Mar 2000	1138	112	776	68
26 Sep 1999	1132	112	750	73	26 Mar 2000	1135	109	767	73
3 Oct 1999	1170	116	806	76	2 Apr 2000	1134	108	744	69
10 Oct 1999	1167	114	822	81	9 Apr 2000	1138	109	797	75
17 Oct 1999	1175	116	818	82	16 Apr 2000	1139	112	798	71
24 Oct 1999	1171	118	835	83	23 Apr 2000	*	*	*	*
31 Oct 1999	1216	118	839	78	30 Apr 2000	1158	110	800	71
7 Nov 1999	1242	119	831	85	7 May 2000	1163	111	812	78
14 Nov 1999	1200	118	792	79	14 May 2000	1168	110	786	70
21 Nov 1999	1211	114	803	74	21 May 2000	1165	113	793	73
28 Nov 1999	1222	113	828	72	28 May 2000	1171	106	799	72
5 Dec 1999	1226	111	847	66	4 Jun 2000	1169	112	816	78
12 Dec 1999	1213	113	835	78	11 Jun 2000	1157	113	756	76
19 Dec 1999	1218	118	809	71	18 Jun 2000	1145	108	778	74
26 Dec 1999	*	*	*	*	25 Jun 2000	1140	107	753	72

* Periodic Detention Centres closed over Christmas and Easter.

Counting rules for people with periodic detention orders changed during 1997/98

Classification of Inmates in Full-time Custody

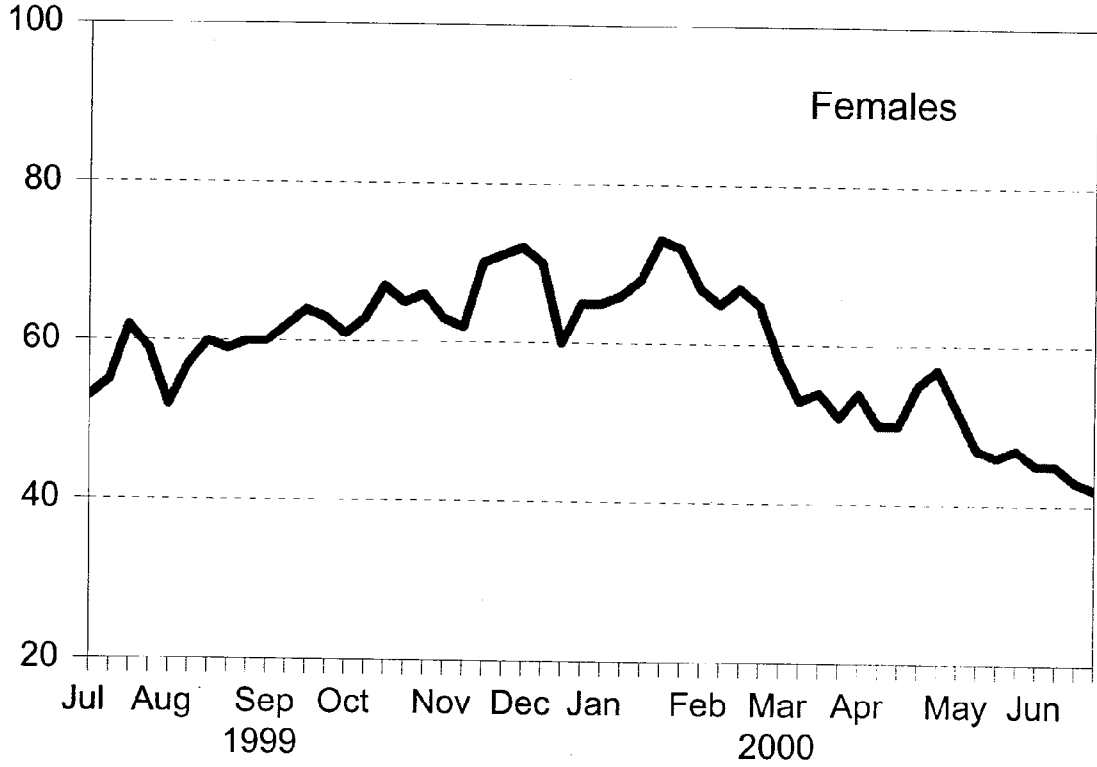
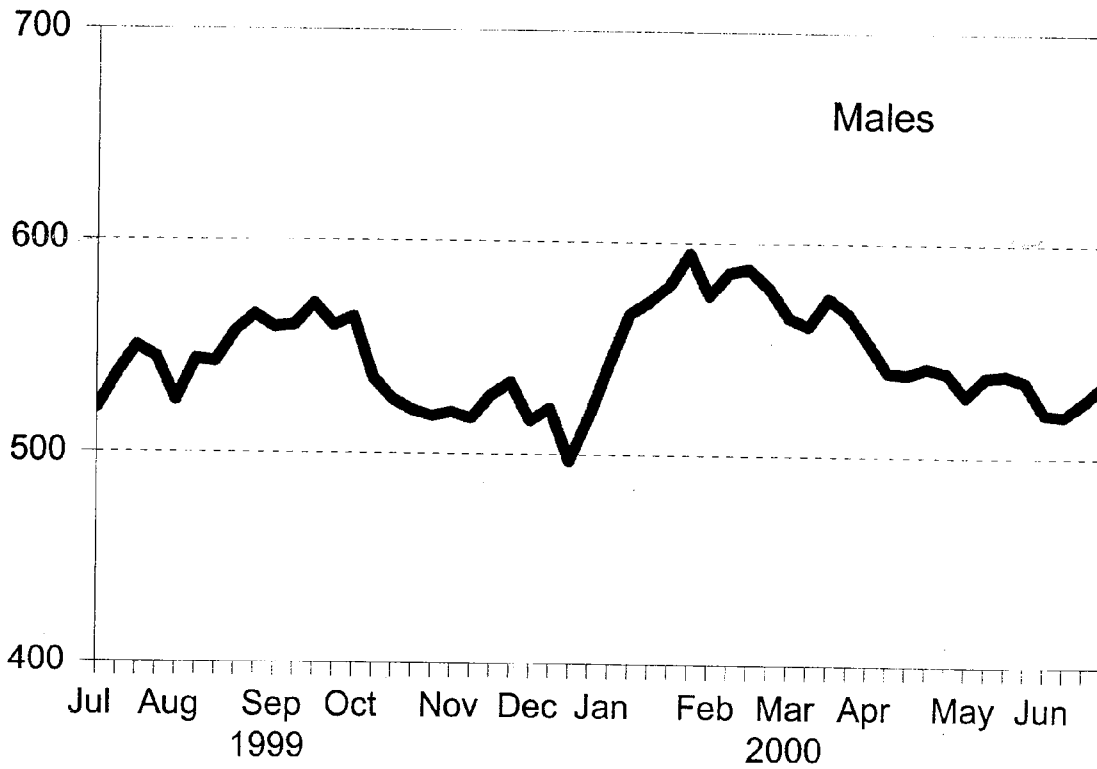


Research & Statistics, NSW Department of Corrective Services

Weekly States July 1999 - June 2000
Classification of Institution in which Inmates are held

Date	Security			Total	Date	Security			Total
	Max	Med	Min			Max	Med	Min	
4 Jul 1999	2537	1601	3129	7267	2 Jan 2000	2454	1546	3167	7167
11 Jul 1999	2490	1610	3172	7272	9 Jan 2000	2483	1530	3143	7156
18 Jul 1999	2446	1601	3155	7202	16 Jan 2000	2527	1516	3131	7174
25 Jul 1999	2509	1583	3118	7210	23 Jan 2000	2492	1546	3160	7198
1 Aug 1999	2519	1598	3117	7234	30 Jan 2000	2487	1597	3162	7246
8 Aug 1999	2521	1617	3149	7287	6 Feb 2000	2529	1583	3185	7297
15 Aug 1999	2533	1594	3169	7296	13 Feb 2000	2543	1557	3152	7252
22 Aug 1999	2521	1560	3221	7302	20 Feb 2000	2522	1602	3151	7275
29 Aug 1999	2543	1574	3217	7334	27 Feb 2000	2510	1592	3187	7289
5 Sep 1999	2533	1587	3214	7334	5 Mar 2000	2513	1577	3188	7278
12 Sep 1999	2536	1599	3194	7329	12 Mar 2000	2517	1564	3202	7283
19 Sep 1999	2529	1591	3191	7311	19 Mar 2000	2529	1597	3202	7328
26 Sep 1999	2535	1587	3196	7318	26 Mar 2000	2505	1594	3218	7317
3 Oct 1999	2530	1593	3189	7312	2 Apr 2000	2540	1578	3254	7372
10 Oct 1999	2515	1582	3198	7295	9 Apr 2000	2578	1574	3264	7416
17 Oct 1999	2484	1585	3239	7308	16 Apr 2000	2564	1569	3273	7406
24 Oct 1999	2492	1545	3218	7255	23 Apr 2000	2572	1565	3278	7415
31 Oct 1999	2494	1557	3210	7261	30 Apr 2000	2534	1575	3248	7357
7 Nov 1999	2488	1552	3194	7234	7 May 2000	2536	1510	3302	7348
14 Nov 1999	2480	1545	3221	7246	14 May 2000	2483	1541	3313	7337
21 Nov 1999	2499	1566	3183	7248	21 May 2000	2468	1541	3271	7280
28 Nov 1999	2508	1548	3200	7256	28 May 2000	2449	1577	3270	7296
5 Dec 1999	2485	1555	3180	7220	4 Jun 2000	2464	1564	3324	7352
12 Dec 1999	2448	1536	3206	7190	11 Jun 2000	2467	1566	3339	7372
19 Dec 1999	2444	1564	3174	7182	18 Jun 2000	2450	1564	3298	7312
26 Dec 1999	2417	1530	3160	7107	25 Jun 2000	2471	1559	3298	7328

Number of Appellants in Full-time Custody



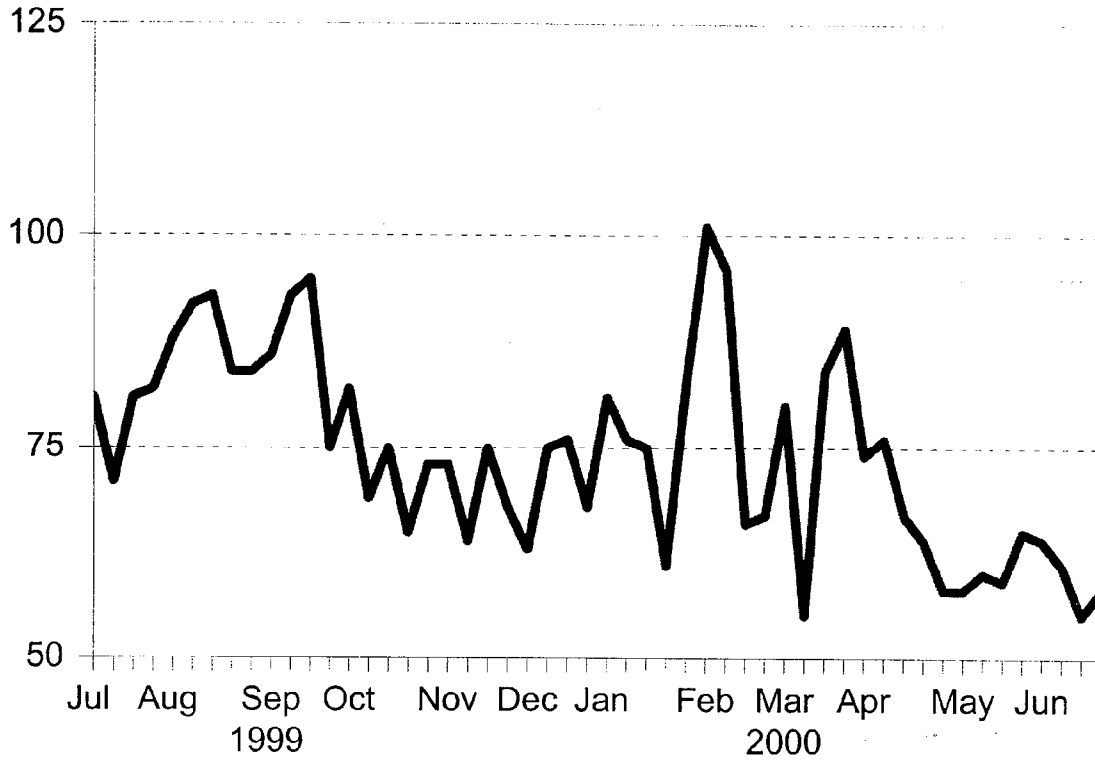
Research & Statistics, NSW Department of Corrective Services

Weekly States July 1999 - June 2000
Number of Appellants in Full-time Custody

Date	Male Appellants	Female Appellants	Total Appellants	Date	Male Appellants	Female Appellants	Total Appellants
4 Jul 1999	521	53	574	2 Jan 2000	543	65	608
11 Jul 1999	537	55	592	9 Jan 2000	566	66	632
18 Jul 1999	550	62	612	16 Jan 2000	572	68	640
25 Jul 1999	545	59	604	23 Jan 2000	580	73	653
1 Aug 1999	525	52	577	30 Jan 2000	595	72	667
8 Aug 1999	544	57	601	6 Feb 2000	575	67	642
15 Aug 1999	543	60	603	13 Feb 2000	586	65	651
22 Aug 1999	557	59	616	20 Feb 2000	588	67	655
29 Aug 1999	565	60	625	27 Feb 2000	579	65	644
5 Sep 1999	559	60	619	5 Mar 2000	565	58	623
12 Sep 1999	560	62	622	12 Mar 2000	561	53	614
19 Sep 1999	570	64	634	19 Mar 2000	574	54	628
26 Sep 1999	560	63	623	26 Mar 2000	567	51	618
3 Oct 1999	564	61	625	2 Apr 2000	554	54	608
10 Oct 1999	536	63	599	9 Apr 2000	540	50	590
17 Oct 1999	526	67	593	16 Apr 2000	539	50	589
24 Oct 1999	521	65	586	23 Apr 2000	542	55	597
31 Oct 1999	518	66	584	30 Apr 2000	540	57	597
7 Nov 1999	520	63	583	7 May 2000	529	52	581
14 Nov 1999	517	62	579	14 May 2000	538	47	585
21 Nov 1999	528	70	598	21 May 2000	539	46	585
28 Nov 1999	534	71	605	28 May 2000	536	47	583
5 Dec 1999	516	72	588	4 Jun 2000	521	45	566
12 Dec 1999	522	70	592	11 Jun 2000	520	45	565
19 Dec 1999	497	60	557	18 Jun 2000	527	43	570
26 Dec 1999	518	65	583	25 Jun 2000	535	42	577

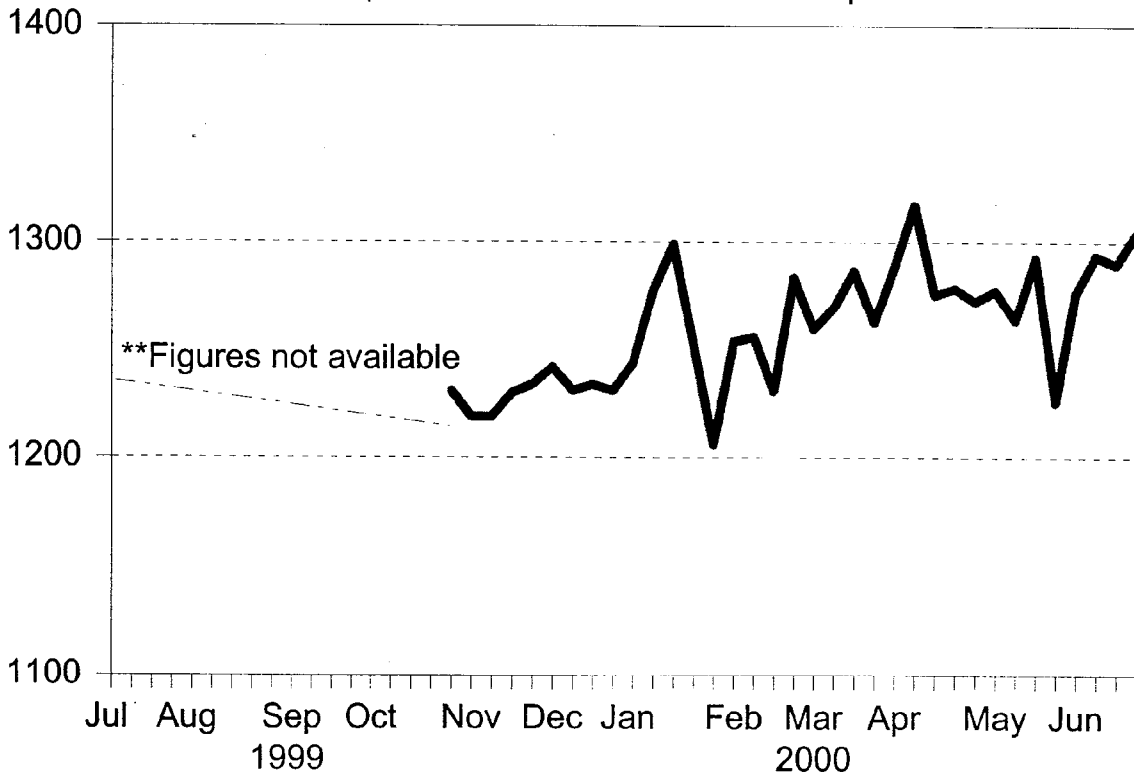
Number of Inmates on Segregation

Segregation=For good order and discipline



Number of Inmates on Protection

On protection = At Inmate's own request



Weekly States July 1999 - June 2000
Segregation and Protection

Date	Segregation*			Protection#			Date	Segregation*			Protection#		
	M	F	Total	M	F	Total		M	F	Total	M	F	Total
4 Jul 1999	73	8	81	1231	§	§	2 Jan 2000	75	6	81	1215	29	1244
11 Jul 1999	64	7	71	1231	§	§	9 Jan 2000	71	5	76	1249	29	1278
18 Jul 1999	78	3	81	1209	§	§	16 Jan 2000	72	3	75	1270	29	1299
25 Jul 1999	81	1	82	1221	§	§	23 Jan 2000	58	3	61	1221	31	1252
1 Aug 1999	85	3	88	1227	§	§	30 Jan 2000	80	3	83	1190	16	1206
8 Aug 1999	89	3	92	1219	§	§	6 Feb 2000	98	3	101	1224	30	1254
15 Aug 1999	91	2	93	1211	§	§	13 Feb 2000	94	2	96	1229	27	1256
22 Aug 1999	83	1	84	1214	§	§	20 Feb 2000	63	3	66	1204	27	1231
29 Aug 1999	83	1	84	1230	§	§	27 Feb 2000	64	3	67	1256	28	1284
5 Sep 1999	84	2	86	1253	§	§	5 Mar 2000	78	2	80	1232	28	1260
12 Sep 1999	92	1	93	1243	§	§	12 Mar 2000	53	2	55	1240	30	1270
19 Sep 1999	95	0	95	1226	§	§	19 Mar 2000	82	2	84	1258	29	1287
26 Sep 1999	75	0	75	1247	§	§	26 Mar 2000	86	3	89	1241	22	1263
3 Oct 1999	82	0	82	1229	§	§	2 Apr 2000	69	5	74	1267	22	1289
10 Oct 1999	69	0	69	1216	§	§	9 Apr 2000	74	2	76	1295	22	1317
17 Oct 1999	74	1	75	1230	§	§	16 Apr 2000	65	2	67	1254	22	1276
24 Oct 1999	64	1	65	1220	§	§	23 Apr 2000	62	2	64	1259	20	1279
31 Oct 1999	72	1	73	1207	24	1231	30 Apr 2000	56	2	58	1254	19	1273
7 Nov 1999	71	2	73	1195	24	1219	7 May 2000	56	2	58	1259	19	1278
14 Nov 1999	61	3	64	1193	26	1219	14 May 2000	57	3	60	1246	18	1264
21 Nov 1999	72	3	75	1206	24	1230	21 May 2000	58	1	59	1275	18	1293
28 Nov 1999	68	0	68	1208	26	1234	28 May 2000	64	1	65	1209	17	1226
5 Dec 1999	63	0	63	1211	31	1242	4 Jun 2000	63	1	64	1256	21	1277
12 Dec 1999	75	0	75	1203	28	1231	11 Jun 2000	61	0	61	1269	25	1294
19 Dec 1999	64	2	66	1201	33	1234	18 Jun 2000	54	1	55	1266	24	1290
26 Dec 1999	65	3	68	1201	30	1231	25 Jun 2000	55	3	58	1282	22	1304

§ Figures not available

* On segregation: for good order and discipline.

On protection: at Inmate's own request.

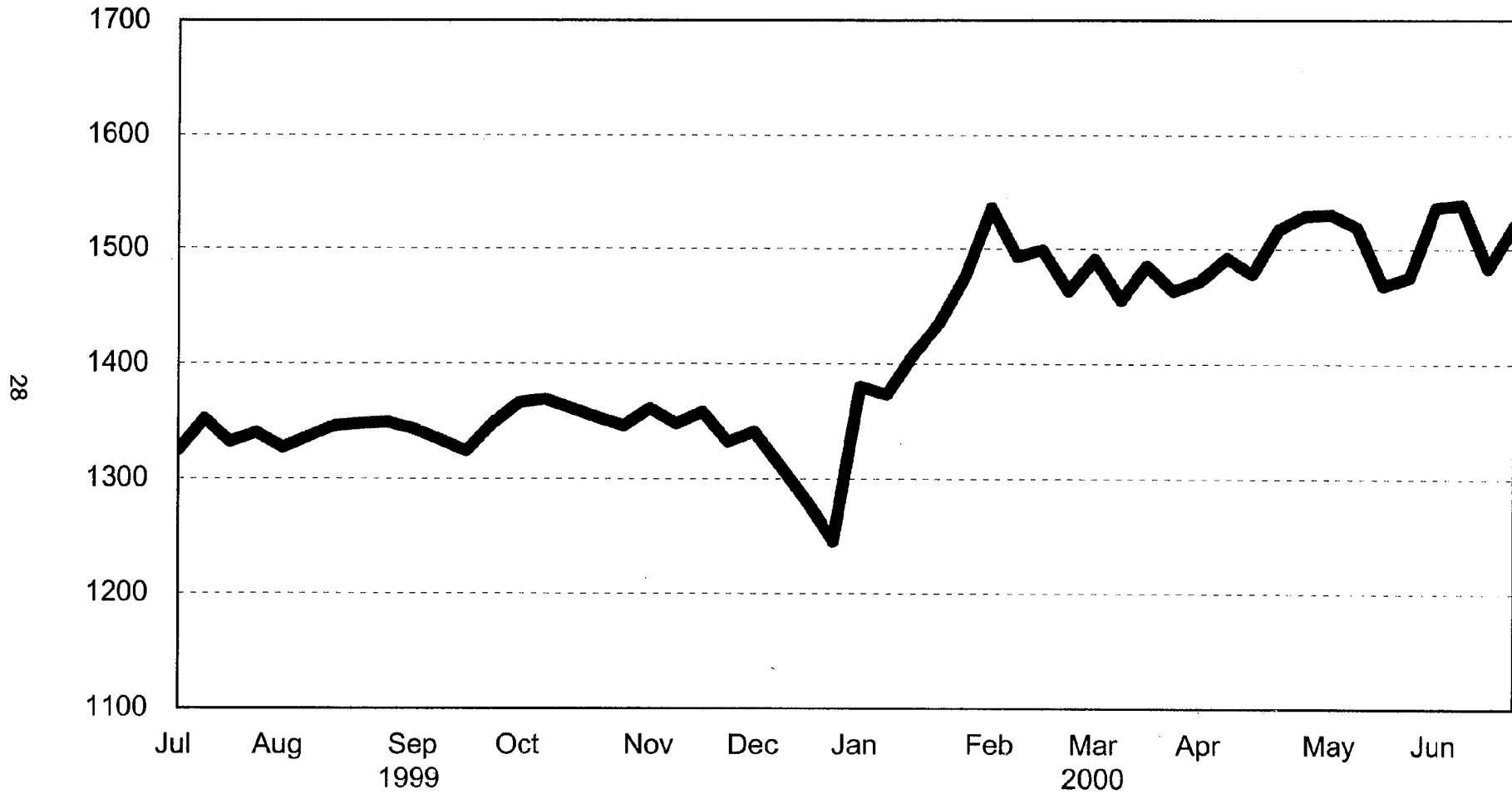
Blank Page

Weekly States July 1999 - June 2000
Number of Fine Defaulters in Full-time Custody *

Date	Male Fine Defaulters	Female Fine Defaulters	Total Fine Defaulters	Date	Male Fine Defaulters	Female Fine Defaulters	Total Fine Defaulters
4 Jul 1999	2	0	2	2 Jan 2000	1	0	1
11 Jul 1999	2	0	2	9 Jan 2000	1	0	1
18 Jul 1999	0	0	0	16 Jan 2000	1	0	1
25 Jul 1999	1	0	1	23 Jan 2000	1	0	1
1 Aug 1999	2	0	2	30 Jan 2000	1	0	1
8 Aug 1999	2	0	2	6 Feb 2000	1	0	1
15 Aug 1999	0	0	0	13 Feb 2000	1	0	1
22 Aug 1999	0	0	0	20 Feb 2000	2	0	2
29 Aug 1999	2	0	2	27 Feb 2000	1	0	1
5 Sep 1999	0	0	0	5 Mar 2000	1	0	1
12 Sep 1999	1	0	1	12 Mar 2000	0	0	0
19 Sep 1999	2	0	2	19 Mar 2000	0	0	0
26 Sep 1999	1	0	1	26 Mar 2000	0	0	0
3 Oct 1999	1	0	1	2 Apr 2000	0	0	0
10 Oct 1999	1	0	1	9 Apr 2000	0	1	1
17 Oct 1999	0	0	0	16 Apr 2000	1	0	1
24 Oct 1999	2	0	2	23 Apr 2000	0	0	0
31 Oct 1999	1	0	1	30 Apr 2000	1	0	1
7 Nov 1999	1	0	1	7 May 2000	2	0	2
14 Nov 1999	1	0	1	14 May 2000	0	0	0
21 Nov 1999	1	0	1	21 May 2000	1	1	2
28 Nov 1999	1	0	1	28 May 2000	3	0	3
5 Dec 1999	0	0	0	4 Jun 2000	2	0	2
12 Dec 1999	0	0	0	11 Jun 2000	2	0	2
19 Dec 1999	2	0	2	18 Jun 2000	3	0	3
26 Dec 1999	2	0	2	25 Jun 2000	1	0	1

* Federal or Interstate Fines only.

Remands, Trials and Deportees (Unsentenced Inmates less appellants)

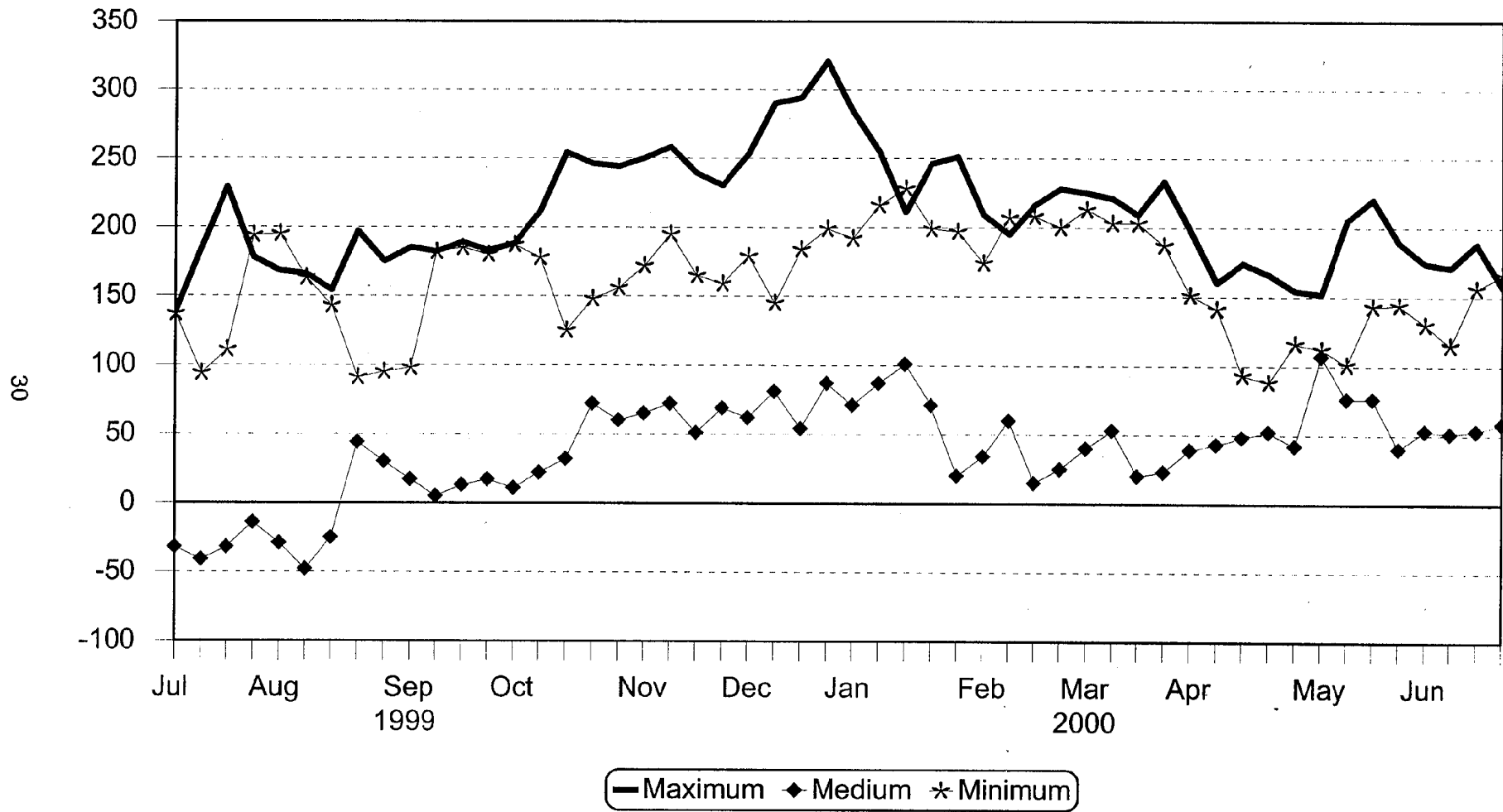


Research & Statistics, NSW Department of Corrective Services

Weekly States July 1999 - June 2000
Number of Unsentenced Inmates Less Appellants

Date	Unsentenced	Appellants	Unsentenced less Appellants	Date	Unsentenced	Appellants	Unsentenced Less Appellants
4 Jul 1999	1898	574	1324	2 Jan 2000	1988	608	1380
11 Jul 1999	1944	592	1352	9 Jan 2000	2005	632	1373
18 Jul 1999	1944	612	1332	16 Jan 2000	2048	640	1408
25 Jul 1999	1944	604	1340	23 Jan 2000	2088	653	1435
1 Aug 1999	1904	577	1327	30 Jan 2000	2143	667	1476
8 Aug 1999	1938	601	1337	6 Feb 2000	2178	642	1536
15 Aug 1999	1949	603	1346	13 Feb 2000	2144	651	1493
22 Aug 1999	1964	616	1348	20 Feb 2000	2154	655	1499
29 Aug 1999	1974	625	1349	27 Feb 2000	2107	644	1463
5 Sep 1999	1962	619	1343	5 Mar 2000	2114	623	1491
12 Sep 1999	1956	622	1334	12 Mar 2000	2069	614	1455
19 Sep 1999	1958	634	1324	19 Mar 2000	2113	628	1485
26 Sep 1999	1971	623	1348	26 Mar 2000	2081	618	1463
3 Oct 1999	1991	625	1366	2 Apr 2000	2080	608	1472
10 Oct 1999	1968	599	1369	9 Apr 2000	2082	590	1492
17 Oct 1999	1954	593	1361	16 Apr 2000	2067	589	1478
24 Oct 1999	1939	586	1353	23 Apr 2000	2114	597	1517
31 Oct 1999	1930	584	1346	30 Apr 2000	2126	597	1529
7 Nov 1999	1944	583	1361	7 May 2000	2111	581	1530
14 Nov 1999	1927	579	1348	14 May 2000	2104	585	1519
21 Nov 1999	1956	598	1358	21 May 2000	2053	585	1468
28 Nov 1999	1937	605	1332	28 May 2000	2058	583	1475
5 Dec 1999	1929	588	1341	4 Jun 2000	2102	566	1536
12 Dec 1999	1903	592	1311	11 Jun 2000	2104	565	1539
19 Dec 1999	1837	557	1280	18 Jun 2000	2053	570	1483
26 Dec 1999	1828	583	1245	25 Jun 2000	2098	577	1521

Accommodation - Full-time Custody Operational Capacity/ Number of Inmates

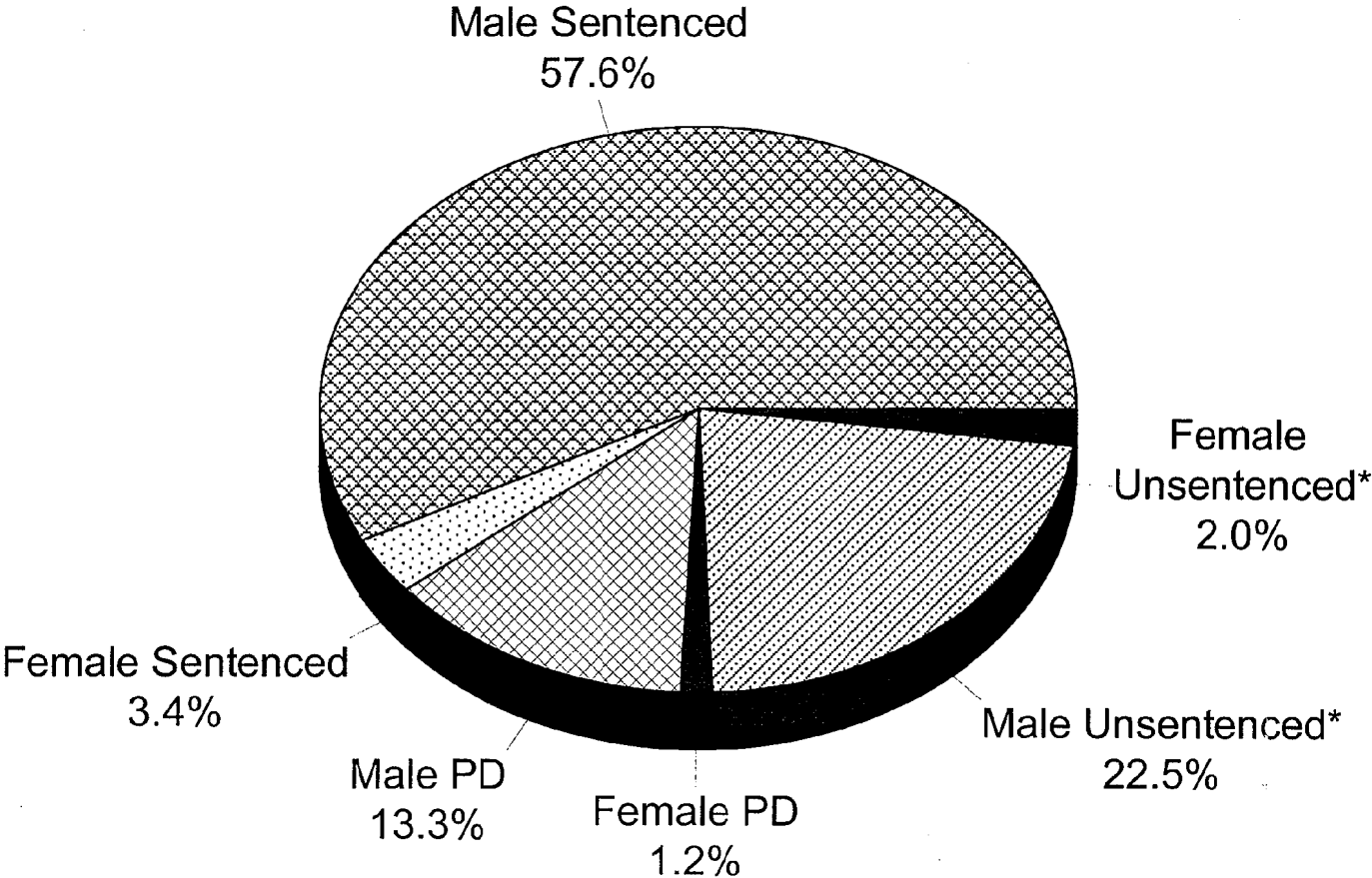


Research & Statistics, NSW Department of Corrective Services

Weekly States July 1999 to June 2000 Accommodation

Operational Capacity/Number of Inmates				Operational Capacity/Number of Inmates			
Date	Max	Med	Min	Date	Max	Med	Min
4 Jul 1999	138	-32	137	2 Jan 2000	284	71	192
11 Jul 1999	185	-41	94	9 Jan 2000	255	87	216
18 Jul 1999	229	-32	111	16 Jan 2000	211	101	228
25 Jul 1999	178	-14	194	23 Jan 2000	246	71	199
1 Aug 1999	168	-29	195	30 Jan 2000	251	20	197
8 Aug 1999	166	-48	163	6 Feb 2000	209	34	174
15 Aug 1999	154	-25	143	13 Feb 2000	195	60	207
22 Aug 1999	197	44	91	20 Feb 2000	216	15	208
29 Aug 1999	175	30	95	27 Feb 2000	228	25	200
5 Sep 1999	185	17	98	5 Mar 2000	225	40	213
12 Sep 1999	182	5	182	12 Mar 2000	221	53	203
19 Sep 1999	189	13	185	19 Mar 2000	209	20	203
26 Sep 1999	183	17	180	26 Mar 2000	233	23	187
3 Oct 1999	188	11	187	2 Apr 2000	198	39	151
10 Oct 1999	211	22	178	9 Apr 2000	160	43	141
17 Oct 1999	254	32	125	16 Apr 2000	174	48	93
24 Oct 1999	246	72	148	23 Apr 2000	166	52	88
31 Oct 1999	244	60	156	30 Apr 2000	154	42	116
7 Nov 1999	250	65	172	7 May 2000	152	107	112
14 Nov 1999	258	72	195	14 May 2000	205	76	101
21 Nov 1999	239	51	165	21 May 2000	220	76	143
28 Nov 1999	230	69	159	28 May 2000	189	40	144
5 Dec 1999	253	62	179	4 Jun 2000	174	53	130
12 Dec 1999	290	81	145	11 Jun 2000	171	51	115
19 Dec 1999	294	54	184	18 Jun 2000	188	53	156
26 Dec 1999	321	87	199	25 Jun 2000	157	58	166

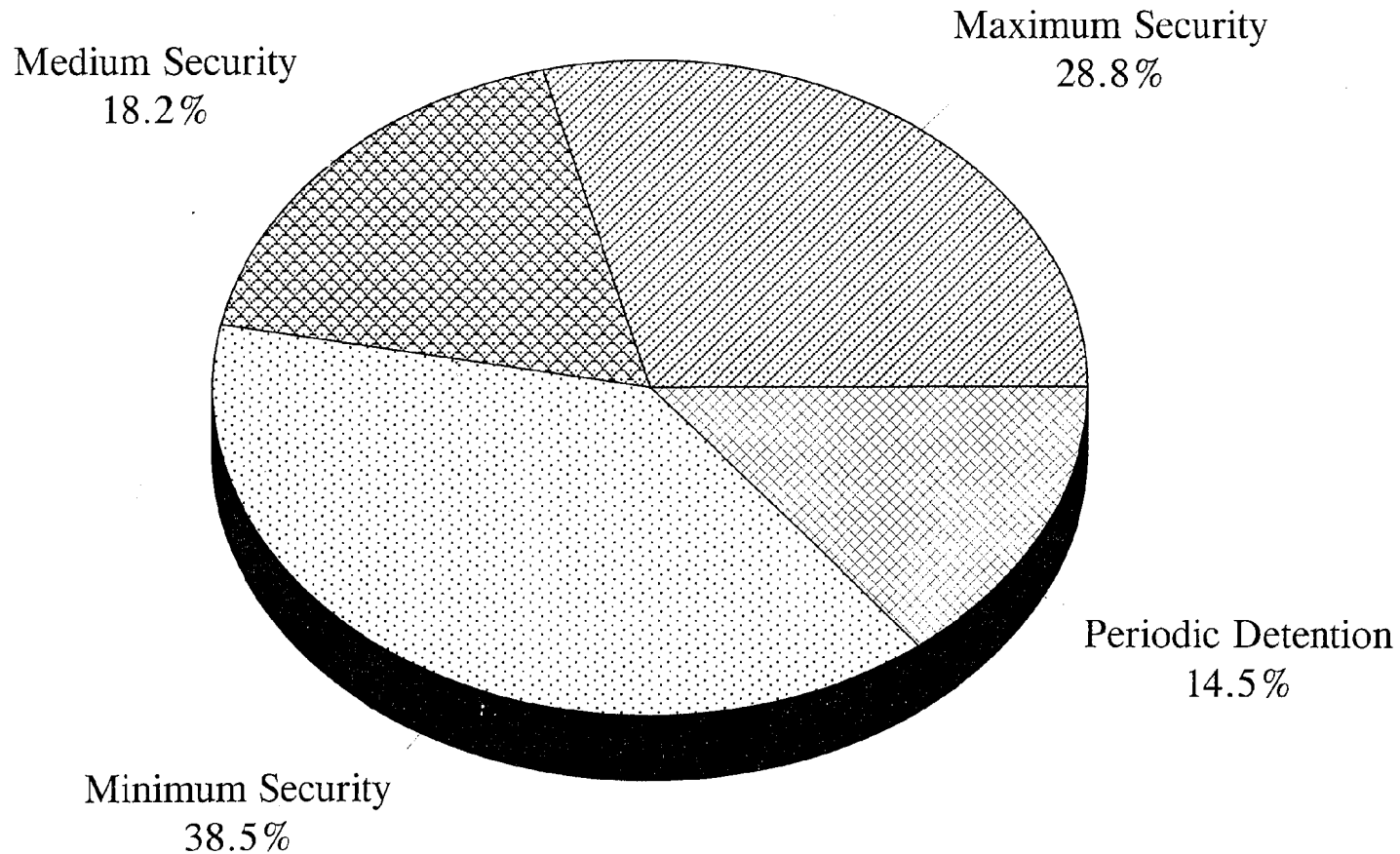
Profile on last Sunday of June 2000



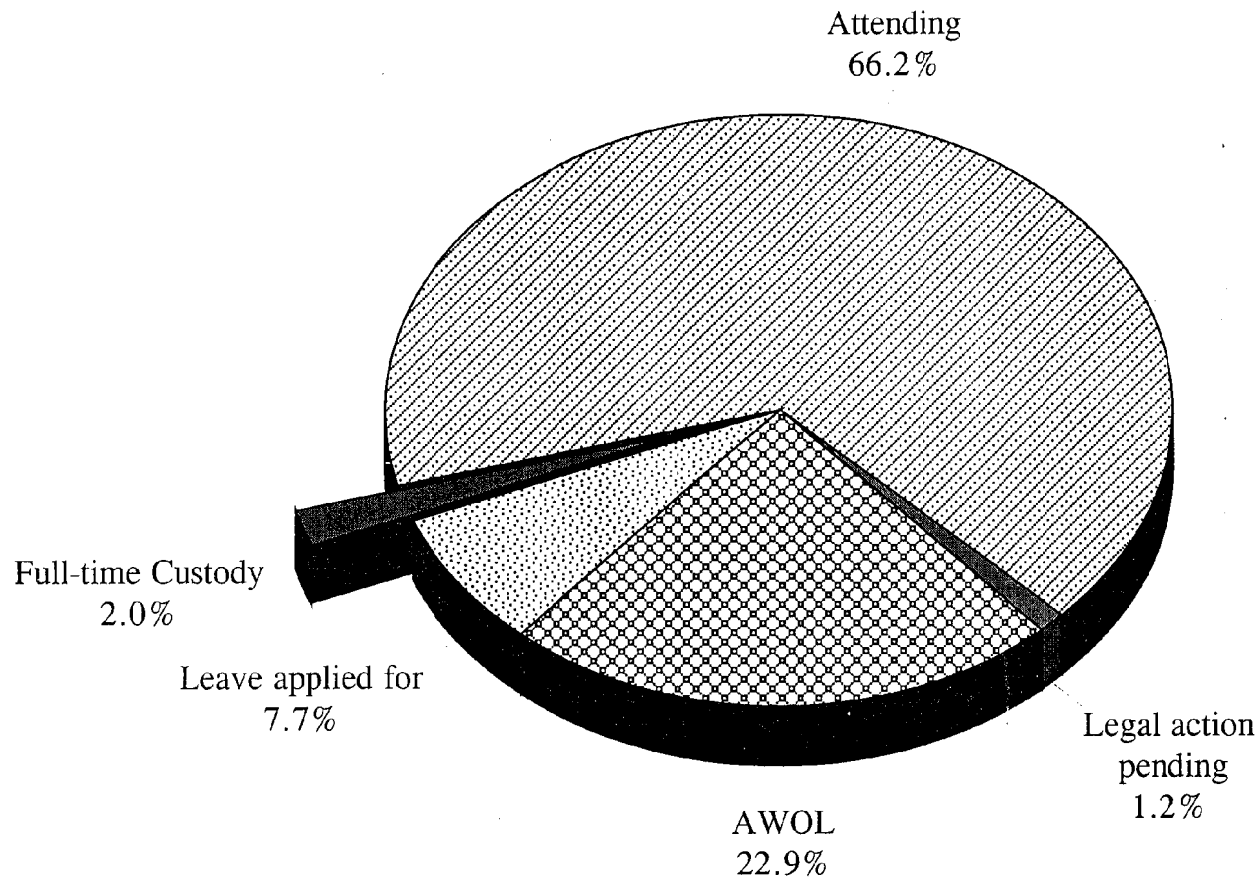
* Unsentenced includes appellants

Institutional Security

Percentage on last Sunday of June 2000



Periodic Detainees Attendance and Reasons for Non-attendance on last Sunday of June 2000



WEEKLY STATES FOR THE WEEK ENDING: 4TH JULY, 1999

TOTAL NUMBER OF FULL-TIME INMATES IN CORRECTIVE SERVICES CUSTODY : 7307
(Includes full-time inmates in correctional centres, transitional centres and police cells).

FULL-TIME INMATES IN CORRECTIONAL CENTRES AND PERIODIC DETAINEES

	Full-time Inmates		All Inmates Full-time + PD	
	No.	Date	No.	Date
State for this week	7267	4/7/99	8507	4/7/99
State for previous week	7240	27/6/99	8497	27/6/99
Highest weekly state, year ending previous week	7240	27/6/99	8497	27/6/99
Lowest weekly state, year ending previous week	6452	28/6/98	7848	28/6/98

Full-time Custody

Total full-time inmates = 6676 (at DOCS institutions) + 591 (June) = 7267

Included in the above total:

Total number of inmates	6833 M+	434 F=	7267 (including 591 at June)
Number of sentenced inmates (excluding appellants)	5089 M+	280 F=	5369 (including 514 at June)
Number of fine defaulters (in gaol for no other reason)	2 M+	0 F=	2 (including 0 at June)
Number of inmates on appeal	521 M+	53 F=	574 (including 56 at June)
Number of inmates on remand or for trial	1221 M+	101 F=	1322 (including 21 at June)
Number of deportees (included in remands)	49 M+	0 F=	49 (including 0 at June)
Number of juveniles under 18 years	3 M+	0 F=	3 (including 0 at June)

Periodic Detention

Number of people with warrants	1131 M+	109 F=	1240
Number of people attending periodic detention	750 M+	79 F=	829

Persons subject to a HOME DETENTION ORDER as at 1st July, 1999 = 115M + 25F = 140.

Inmates held in NSW Police Cells not already counted as a temporary absentee from a correctional centre *						
	Unsentenced		Sentenced		TOTAL	
	M	F	M	F	M	F
Sydney Police Centre =	11	0	0	0	11	0
Dubbo Police Centre =	2	0	0	0	2	0
Moree Police Centre =	0	0	0	0	0	0
Port Macquarie Police Centre =	1	0	0	0	1	0
Newcastle Police Centre =	4	0	3	0	7	0

* Inmates are not included in the total number for full-time inmates in correctional centres.

Parramatta Transitional Centre*	
Total number of sentenced inmates =	19 (including 0 on appeal)

* Inmates at the Transitional Centre are not included in the total number for full-time inmates in correctional centres.

NUMBER OF PEOPLE WITH COMMUNITY BASED ORDERS AS AT 1ST JUNE, 1999

Supervision	8481 M+	1743 F=	10224
Reparation (eg Community Service Order)	4465 M+	865 F=	5330
Fine Substitution	293 M+	57 F=	350
Post Prison Orders (eg Parole)	2540 M+	212 F=	2752
Other Orders (eg Bail Supervision, Home Detention)	392 M+	99 F=	491
Total Offenders **	14507 M+	2652 F=	17159

** Some offenders are subject to orders in more than one category.

WEEKLY STATES AT MIDNIGHT ON:

4TH JULY, 1999

FULL-TIME INMATES

	INMATES					Accomm: Oper. Capcty*	Accom +/-**	Segreg- ation		Protect- ion	
	Males		Females		Total			M	F	M	F
	U/S	S	U/S	S							
Goulburn (Maximum)	54	309	-	-	363	408	45	16	-	179	-
Long Bay Complex:											
- Special Purpose Centre	9	31	-	-	40	41	1	-	-	-	-
- L. Bay D.D. Unit	8	7	-	-	15	18	3	-	-	-	-
Long Bay Hospital:						120	13				
- L. Bay Hospital - Med.	7	15	-	-	22			-	-	-	-
- L. Bay Hospital - Psych.	17	66	-	-	83			-	-	-	-
- Hospital Annexes	1	1	-	-	2			-	-	-	-
- Metro Medical Transient Centre	146	167	-	-	313	332	19	6	-	139	-
- Malabar Special Programs:											
- Special Care Unit	-	-	-	-	0	27	27	-	-	-	-
- Kevin Waller Unit	2	10	-	-	12	15	3	-	-	-	-
- Lifestyles Unit	-	-	-	-	0	8	8	-	-	-	-
- Alexander Maconochie	-	-	-	-	0	10	10	-	-	-	-
- Area 3	16	155	-	-	171	180	9	-	-	-	-
- Area 4	31	86	-	-	117	120	3	-	-	50	-
- Assessment Unit	11	48	-	-	59	60	1	-	-	-	-
Lithgow	44	284	-	-	328	335	7	14	-	58	-
Metro Remand & Reception	670	230	-	-	900	874	-26	14	-	158	-
Cessnock (Maximum)	55	57	-	-	112	127	15	4	-	37	-
Sub-total	1071	1466	0	0	2537	2675	138	54	0	621	0
Bathurst (Medium)	66	189	-	-	255	260	5	3	-	33	-
Broken Hill	5	39	1	2	47	50	3	-	-	-	-
Grafton (Medium)	45	95	1	3	144	148	4	-	-	20	-
Mulawa	-	-	116	156	272	235	-37	-	8	-	-
Parklea (Medium)	147	185	-	-	332	312	-20	12	-	8	-
Junee (Medium)	70	420	1	-	491	500	9	3	-	468	-
Tamworth	27	33	-	-	60	64	4	1	-	-	-
Sub-total	360	961	119	161	1601	1569	-32	19	8	529	0
Berrima	3	60	-	-	63	65	2	-	-	-	-
Emu Plains	-	-	33	107	142	138	-4	-	-	-	-
- Work Release	-	-	-	2							
Silverwater	39	332	-	-	423	450	27	-	-	-	-
- Work Release	-	52	-	-							
Parklea (Minimum)	-	47	-	-	51	88	37	-	-	-	-
- Work Release	-	4	-	-							
Parramatta	126	90	-	-	216	220	4	-	-	-	-
Goulburn (Minimum)	5	103	-	-	108	103	-5	-	-	-	-
Bathurst (Minimum)	8	114	-	-	122	125	3	-	-	-	-
- Work Release	-	-	-	-							
Grafton (Minimum)	7	101	2	10	120	129	9	-	-	-	-
Industrial Training Centre	32	295	-	-	412	412	0	-	-	-	-
- Area C (Non-work Release)	6	51	-	-							
- Area C (Work Release)	-	28	-	-							
St Heliers	11	230	-	-	247	256	9	-	-	-	-
- St Heliers Mobile Camp	-	6	-	-							
Glen Innes	4	109	-	-	113	130	17	-	-	-	-
Mannus	7	145	-	-	152	164	12	-	-	-	-
Oberon	1	74	-	-	75	100	25	-	-	-	-
Kirkconnell	7	193	-	-	200	210	10	-	-	-	-
Junee (Minimum)	6	94	-	-	100	100	0	-	-	81	-
John Morony	14	220	-	-	239	239	0	-	-	-	-
- Work Release	-	5	-	-							
Cessnock (Minimum)	36	310	-	-	346	337	-9	-	-	-	-
Sub-total	312	2663	35	119	3129	3266	137	0	0	81	0
TOTAL FULL-TIME	1743	5090	154	280	7267	7510	243	73	8	1231	0

* Accommodation is the operational capacity, provided by the Classification and Placement Unit - amended 23rd May, 1999.

**Difference between the operational capacity and the number of inmates.

S=Sentenced inmates (not including appellants) U/S=Unsentenced inmates (including appellants, trials, remandees and deportees)

WEEKLY STATES FOR THE WEEK ENDING: 4TH JULY, 1999

PERIODIC

DETAINEES (P.D.'S)

	People with warrants			Attending			No.*	Beds*
	Stage1	Stage2	Total	Stage1	Stage2	Total	Beds	+/-
Administration**	33	0	33	0	0	0	0	0
Bathurst	31	6	37	20	6	26	20	0
Campbelltown	59	9	68	42	8	50	68	26
Campbelltown Mid-week	36	7	43	14	7	21	68	54
Grafton	36	20	56	28	16	44	50	22
Mannus	27	5	32	22	5	27	24	2
Metropolitan	276	66	342	136	61	197	190	54
Metropolitan Mid-week	131	51	182	69	51	120	190	121
Tamworth	14	2	16	10	2	12	15	5
Tomago	90	30	120	66	29	95	96	30
Windsor	69	23	92	49	22	71	60	11
Wollongong	87	23	110	65	22	87	82	17
Total Males	889	242	1131	521	229	750	863	342

Administration**	4	0	4	0	0	0	0	0
Bathurst	5	0	5	5	0	5	10	5
Norma Parker	39	16	55	26	15	41	30	4
Norma Parker Mid-week	18	6	24	10	5	15	30	20
Mannus	3	1	4	2	1	3	6	4
Tomago	7	4	11	6	4	10	20	14
Wollongong	6	0	6	5	0	5	10	0
Total Females	82	27	109	54	25	79	106	47

TOTAL P.D.'S	971	269	1240	575	254	829	969	389
---------------------	------------	------------	-------------	------------	------------	------------	------------	------------

* Number of free beds calculated on the numbers attending in Stage 1 and assuming uncrowded conditions.

Amended 25th April, 1999.

** Administration includes long term absentees and long term sick.

Number of fine defaulters attending periodic detention = 0.

The total number of people with warrants comprises:

Number attending		750 M+	79 F=	829
Number in full-time custody	sentenced-one month or less	0 M+	0 F=	0
	sentenced-more than one month	7 M+	0 F=	7
	remand	7 M+	0 F=	7
Number on appeal with bail		0 M+	0 F=	0
Number absent - leave applied for	- sick	56 M+	10 F=	66
	- other	24 M+	2 F=	26
Total absent - reasons known		94 M+	12 F=	106
Number absent without leave	- no reason given	142 M+	6 F=	148
	- legal action pending	98 M+	12 F=	110
	- appealing Sec 25 cancellation	47 M+	0 F=	47
Total absent without leave		287 M+	18 F=	305
Total number of people with warrants		1131 M+	109 F=	1240

WEEKLY STATES FOR THE WEEK ENDING:

1ST AUGUST, 1999

TOTAL NUMBER OF FULL-TIME INMATES IN CORRECTIVE SERVICES CUSTODY = 7309.
(Includes full-time inmates in correctional centres, transitional centres and police cells).

FULL-TIME INMATES IN CORRECTIONAL CENTRES AND PERIODIC DETAINEES

	Full-time Inmates		All Inmates Full-time + PD	
	No.	Date	No.	Date
State for this week	7234	1/8/99	8421#	1/8/99
State for previous week	7210	25/7/99	8421	25/7/99
Highest weekly state, year ending previous week	7272	11/7/99	8516	11/7/99
Lowest weekly state, year ending previous week	6544	26/7/98	7885	9/8/98

Full-time Custody

Preliminary figure

Total full-time inmates 6650 (at DOCS institutions) + 584 (at June) = 7234

Included in the above total:

Total number of inmates	6804 M+	430 F=	7234 (including 584 at June)
Number of sentenced inmates (excluding appellants)	5048 M+	282 F=	5330 (including 502 at June)
Number of fine defaulters (in gaol for no other reason)	2 M+	0 F=	2 (including 2 at June)
Number of inmates on appeal	523 M+	52 F=	575 (including 54 at June)
Number of inmates on remand or for trial	1231 M+	96 F=	1327 (including 28 at June)
Number of inmates as deportees (included in remands)	46 M+	0 F=	46 (including 0 at June)
Number of juveniles under 18 years	2 M+	0 F=	2 (including 0 at June)

Periodic Detention

Number of people with warrants	1081# M+	106 F=	1187#
Number of people attending periodic detention	777# M+	81 F=	858#

Persons subject to a HOME DETENTION ORDER as at 1st August, 1999 = 108M + 27F = 135.

Inmates held in NSW Police Cells not already counted as a temporary absentee from a correctional centre *							
	Unsentenced		Sentenced		TOTAL		
	M	F	M	F	M	F	
Sydney Police Centre =	10	0	11	0	21	0	
Dubbo Police Centre =	0	0	0	0	0	0	
Moree Police Centre =	4	0	0	0	4	0	
Port Macquarie Police Centres =	1	0	3	0	4	0	
Newcastle Police Centre =	21	0	7	0	28	0	

* Inmates are not included in the full-time custody total.

Parramatta Transitional Centre*		
Total Number of sentenced inmates	=	18 (including 0 on appeal)

* Inmates at the Transitional Centre are not included in the total number for full-time inmates in correctional centres

NUMBER OF PEOPLE WITH COMMUNITY BASED ORDERS AS AT 1ST JULY, 1999

Supervision	8412 M+	1739 F=	10151
Reparation (eg Community Service Order)	4482 M+	863 F=	5345
Fine Substitution	291 M+	56 F=	347
Post Prison Orders (eg Parole)	2568 M+	212 F=	2780
Other Orders (eg Bail Supervision, Home Detention)	379 M+	101 F=	480
Total Offenders **	14445 M+	2652 F=	17097

** Some offenders are subject to orders in more than one category.

WEEKLY STATES AT MIDNIGHT ON: 1ST AUGUST, 1999

**FULL-TIME
INMATES**

	INMATES					Accomm:	Accom	Segreg-		Protect-	
	Males		Females		Total	Oper.	+/-**	ation		ion	
	U/S	S	U/S	S		Capcty*		M	F	M	F
Goulburn (Maximum)	63	311	-	-	374	408	34	23	-	181	-
Long Bay Complex:											
- Special Purpose Centre	10	30	-	-	40	41	1	-	-	-	-
- L. Bay D.D. Unit	6	5	-	-	11	18	7	-	-	-	-
Long Bay Hospital:						120	3				
M - L. Bay Hospital - Med.	7	21	-	-	28						
A - L. Bay Hospital - Psych.	30	58	-	-	88						
X - Hospital Annexes	-	1	-	-	1						
I - Metro Medical Transient Centre	140	174	-	-	314	332	18	11	-	133	-
M - Malabar Special Programs:											
U - Special Care Unit	-	-	-	-	0	27	27	-	-	-	-
M - Kevin Waller Unit	1	9	-	-	10	15	5	-	-	-	-
- Lifestyles Unit	1	7	-	-	8	8	0	-	-	-	-
- Alexander Maconochie	-	-	-	-	0	10	10	-	-	-	-
- Area 3	14	159	-	-	173	180	7	-	-	-	-
- Area 4	33	72	-	-	105	120	15	-	-	49	-
- Assessment Unit	11	44	-	-	55	60	5	-	-	-	-
Lithgow	40	268	-	-	308	335	27	8	-	58	-
Metro Remand & Reception	677	214	-	-	891	886	-5	9	-	170	-
Cessnock (Maximum)	57	56	-	-	113	127	14	-	-	37	-
Sub-total	1090	1429	0	0	2519	2687	168	51	- 0	628	0
Bathurst (Medium)	74	183	-	2	259	260	1	7	-	39	-
M Broken Hill	7	39	1	3	50	50	0	-	-	-	-
E Grafton (Medium)	44	100	2	-	146	148	2	-	1	17	-
D Mulawa	-	-	110	170	280	235	-45	-	2	-	1
I Parklea (Medium)	138	190	-	-	328	312	-16	25	-	8	-
U Junee (Medium)	76	408	1	-	485	500	15	2	-	454	-
M Tamworth	20	30	-	-	50	64	14	-	-	-	-
Sub-total	359	950	114	175	1598	1569	-29	34	3	518	1
Berrima	3	59	-	-	62	65	3	-	-	-	-
Emu Plains	-	-	30	94	126	138	12	-	-	-	-
- Work Release	-	-	-	2							
Silverwater	34	325	-	-	410	450	40	-	-	-	-
- Work Release	-	51	-	-							
M Parklea (Minimum)	4	35	-	-	43	88	45	-	-	-	-
I - Work Release	-	4	-	-							
N Parramatta	109	138	-	-	247	266	19	-	-	-	-
I Goulburn (Minimum)	7	103	-	-	110	103	-7	-	-	-	-
M Bathurst (Minimum)	9	114	-	-	123	125	2	-	-	-	-
U - Work Release	-	-	-	-							
M Grafton (Minimum)	12	98	4	11	125	129	4	-	-	-	-
Industrial Training Centre	34	290	-	-	411	412	1	-	-	-	-
- Area C (Non-work Release)	6	50	-	-							
- Area C (Work Release)	-	31	-	-							
St Heliers	12	236	-	-	248	256	8	-	-	-	-
- St Heliers Mobile Camp	-	-	-	-							
Glen Innes	3	108	-	-	111	130	19	-	-	-	-
Mannus	2	144	-	-	146	164	18	-	-	-	-
Oberon	4	84	-	-	88	100	12	-	-	-	-
Kirkconnell	9	179	-	-	188	210	22	-	-	-	-
Junee (Minimum)	5	94	-	-	99	100	1	-	-	81	-
John Morony	17	215	-	-	237	239	2	-	-	-	-
- Work Release	-	5	-	-							
Cessnock (Minimum)	37	306	-	-	343	337	-6	-	-	-	-
Sub-total	307	2669	34	107	3117	3312	195	0	0	81	0
TOTAL FULL-TIME	1756	5048	148	282	7234	7568	334	85	3	1227	1

* Accommodation is the operational capacity, provided by the Classification and Placement Unit - amended 25 July, 1999.

**Difference between the operational capacity and the number of inmates.

S=Sentenced inmates (not including appellants) U/S=Unsentenced inmates (including appellants, trials, remandees and deportees)

WEEKLY STATES FOR THE WEEK ENDING: 1ST AUGUST, 1999

PERIODIC DETAINEES (P.D.'S)	People with warrants			Attending			No.*	Beds*
	Stage1	Stage2	Total	Stage1	Stage2	Total	Beds	+/-
Administration**	23	0	23	0	0	0	0	0
Bathurst#	28	6	34#	20	5	25#	20	0
Campbelltown	61	15	76	41	15	56	68	27
Campbelltown Mid-week	29	6	35	19	4	23	68	49
Grafton	32	24	56	25	22	47	50	25
Mannus	18	10	28	11	10	21	24	13
Metropolitan	270	78	348	161	74	235	190	29
Metropolitan Mid-week	105	50	155	51	45	96	190	139
Tamworth	16	2	18	14	2	16	15	1
Tomago	81	34	115	59	32	91	96	37
Windsor	72	20	92	62	18	80	60	-2
Wollongong	73	28	101	59	28	87	82	23
Total Males	808	273	1081#	522	255	777#	863	341

Administration**	4	0	4	0	0	0	0	0
Bathurst	5	0	5	3	0	3	10	7
Norma Parker	42	14	56	33	13	46	30	-3
Norma Parker Mid-week	14	5	19	8	4	12	30	22
Mannus	2	2	4	2	2	4	6	4
Tomago	9	2	11	7	2	9	20	13
Wollongong	7	0	7	7	0	7	10	3
Total Females	83	23	106	60	21	81	106	46

TOTAL P.D.'S	891	296	1187#	582	276	858#	969	387
---------------------	------------	------------	--------------	------------	------------	-------------	------------	------------

* Number of free beds calculated on the numbers attending in Stage 1 and assuming uncrowded conditions.

Amended 25 April, 1999.

Preliminary figure

** Administration includes long term absentees and long term sick.

Number of fine defaulters attending periodic detention = 0.

The total number of people with warrants comprises:

Number attending		777# M+	81 F =	858#
Number in full-time custody	sentenced-one month or less	1 M+	0 F =	1
	sentenced-more than one month	5 M+	0 F =	5
	remand	11 M+	0 F =	11
Number on appeal with bail		3 M+	0 F =	3
Number absent - leave applied for	- sick	44 M+	6 F =	50
	- other	30 M+	2 F =	32
Total absent - reasons known		94# M+	8 F =	102#
Number absent without leave	- no reason given	103 M+	8 F =	111
	- legal action pending	61 M+	9 F =	70
	- appealing Sec 25 cancellation	46 M+	0 F =	46
Total absent without leave		210# M+	17 F =	227#
Total number of people with warrants		1081# M+	106 F =	1187#

WEEKLY STATES FOR THE WEEK ENDING:

5TH SEPTEMBER, 1999

TOTAL NUMBER OF FULL-TIME INMATES IN CORRECTIVE SERVICES CUSTODY = 7388
 (Includes full-time inmates in correctional centres, transitional centres and police cells).

**FULL-TIME INMATES IN CORRECTIONAL CENTRES
 AND PERIODIC DETAINEES**

	Full-time Inmates		All Inmates Full-time + PD	
	No.	Date	No.	Date
State for this week	7334	05/09/1999	8563	05/09/1999
State for previous week	7334	29/08/1999	8532	29/08/1999
Highest weekly state, year ending previous week	7334	29/08/1999	8532	29/08/1999
Lowest weekly state, year ending previous week	6665	11/10/1998	8093	27/09/1998

Full-time Custody

Total full-time inmates 6746 (at DOCS institutions) + 588 (at Junee) = 7334

Included in the above total:

Total number of inmates	6891 M+	443 F=	7334 (including 588 at Junee)
Number of sentenced inmates (excluding appellants)	5098 M+	274 F=	5372 (including 514 at Junee)
Number of fine defaulters (in gaol for no other reason)	0 M+	0 F=	0 (including 0 at Junee)
Number of inmates on appeal	559 M+	60 F=	619 (including 55 at Junee)
Number of inmates on remand or for trial	1234 M+	109 F=	1343 (including 19 at Junee)
Number of inmates as deportees	44 M+	0 F=	44 (including 0 at Junee)
Number of juveniles under 18 years	1 M+	1 F=	2 (including 0 at Junee)

Periodic Detention

Number of people with warrants	1116 M+	113 F=	1229
Number of people attending periodic detention	809 M+	72 F=	881

Persons subject to a HOME DETENTION ORDER as at 1st September, 1999 = 104M + 23F = 127.

Inmates held in NSW Police Cells not already counted as a temporary absentee from a correctional centre *							
	Unsentenced		Sentenced		TOTAL		
	M	F	M	F	M	F	
Sydney Police Centre =	29	0	1	0	30	0	
Dubbo Police Centre =	0	0	0	0	0	0	
Moree Police Centre =	3	0	0	0	3	0	
Port Macquarie Police Centres =	0	0	0	0	0	0	
Newcastle Police Centre =	5	0	0	0	5	0	
Lismore Police Centre =	0	0	0	0	0	0	

* Inmates are not included in the full-time custody total.

Parramatta Transitional Centre*	
Total Number of sentenced inmates	= 16 (including 0 on appeal)

* Inmates at the Transitional Centre are not included in the total number for full-time inmates in correctional centres

NUMBER OF PEOPLE WITH COMMUNITY BASED ORDERS AS AT 1ST AUGUST, 1999

Supervision	8542 M+	1767 F=	10309
Reparation (eg Community Service Order)	4465 M+	868 F=	5333
Fine Substitution	290 M+	56 F=	346
Post Prison Orders (eg Parole)	2649 M+	223 F=	2872
Other Orders (eg Bail Supervision, Home Detention)	386 M+	98 F=	484
Total Offenders **	14648 M+	2687 F=	17335

** Some offenders are subject to orders in more than one category.

WEEKLY STATES AT MIDNIGHT ON: 5TH SEPTEMBER, 1999

FULL-TIME INMATES

	INMATES				Total	Accomm: Oper. Capcty*	Accom +/-**	Segregation		Protection	
	Males		Females					M	F	M	F
	U/S	S	U/S	S							
Goulburn (Maximum)	65	300	-	-	365	408	43	26	-	169	-
Long Bay Complex:											
- Special Purpose Centre	10	29	-	-	39	41	2	-	-	-	-
- L. Bay D.D. Unit	8	6	-	-	14	18	4	-	-	-	-
Long Bay Hospital:						120	6				
M - L. Bay Hospital - Med.	8	16	-	-	24			-	-	-	-
A - L. Bay Hospital - Psych.	24	65	-	-	89			-	-	-	-
X - Hospital Annexes	-	1	-	-	1			-	-	-	-
I - Metro Medical Transient Centre	149	165	-	-	314	332	18	9	-	142	-
M - Malabar Special Programs:											
U - Special Care Unit	-	-	-	-	0	27	27	-	-	-	-
M - Kevin Waller Unit	1	9	-	-	10	15	5	-	-	-	-
- Lifestyles Unit	1	7	-	-	8	8	0	-	-	-	-
- Alexander Maconochie	-	-	-	-	0	10	10	-	-	-	-
- Area 3	14	155	-	-	169	180	11	-	-	-	-
- Area 4	24	94	-	-	118	120	2	-	-	50	-
- Assessment Unit	12	43	-	-	55	60	5	-	-	-	-
Lithgow	52	280	-	-	332	335	3	14	-	61	-
Metro Remand & Reception	673	210	-	-	883	917	34	8	-	173	-
Cessnock (Maximum)	56	56	-	-	112	127	15	3	-	40	-
Sub-total	1097	1436	0	0	2533	2718	185	60	0	635	0
M Bathurst (Medium)	87	172	2	-	261	260	-1	3	-	36	-
E Broken Hill	9	43	1	3	56	50	-6	-	-	-	-
D Grafton (Medium)	53	85	1	1	140	148	8	-	-	16	-
I Mulawa	-	-	127	154	281	270	-11	-	2	-	3
U Parklea (Medium)	127	183	-	-	310	312	2	21	-	10	-
M Junee (Medium)	68	422	-	-	490	500	10	-	-	476	-
M Tamworth	20	29	-	-	49	64	15	-	-	-	-
Sub-total	364	934	131	158	1587	1604	17	24	2	538	3
M Berrima	4	57	-	-	61	65	4	-	-	-	-
Emu Plains	-	-	35	104	139	138	-1	-	-	-	-
- Work Release	-	-	-	-							
Silverwater	51	316	-	-	420	450	30	-	-	-	-
- Work Release	-	53	-	-							
M Parklea (Minimum)	2	48	-	-	55	88	33	-	-	-	-
I - Work Release	-	5	-	-							
N Parramatta	111	198	-	-	309	266	-43	-	-	-	-
I Goulburn (Minimum)	6	100	-	-	106	103	-3	-	-	-	-
M Bathurst (Minimum)	11	109	-	-	120	125	5	-	-	-	-
U - Work Release	-	-	-	-							
M Grafton (Minimum)	11	99	3	12	125	129	4	-	-	-	-
Industrial Training Centre	33	290	-	-	410	412	2	-	-	-	-
- Area C (Non-work Release)	8	46	-	-							
- Area C (Work Release)	-	33	-	-							
St Heliers	10	229	-	-	245	256	11	-	-	-	-
- St Heliers Mobile Camp	-	6	-	-							
Glen Innes	6	105	-	-	111	130	19	-	-	-	-
Mannus	5	135	-	-	140	164	24	-	-	-	-
Oberon	5	86	-	-	91	100	9	-	-	-	-
Kirkconnell	12	196	-	-	208	210	2	-	-	-	-
Junee (Minimum)	6	92	-	-	98	100	2	-	-	80	-
John Morony	16	211	-	-	234	239	5	-	-	-	-
- Work Release	-	7	-	-							
Cessnock (Minimum)	35	307	-	-	342	337	-5	-	-	-	-
Sub-total	332	2728	38	116	3214	3312	98	0	0	80	0
TOTAL FULL-TIME	1793	5098	169	274	7334	7634	300	84	2	1253	3

* Accommodation is the operational capacity, provided by the Classification and Placement Unit - amended 22 August, 1999.

**Difference between the operational capacity and the number of inmates.

S=Sentenced inmates (not including appellants) U/S=Unsentenced inmates (including appellants, trials, remandees and deportees)

WEEKLY STATES FOR THE WEEK ENDING: 5TH SEPTEMBER, 1999

PERIODIC DETAINEES (P.D.'S)	People with warrants			Attending			No.* Beds	Beds* +/-
	Stage1	Stage2	Total	Stage1	Stage2	Total		
Administration**	24	0	24	0	0	0	0	0
Bathurst	28	7	35	21	6	27	20	-1
Campbelltown	83	11	94	52	11	63	68	16
Campbelltown Mid-week	33	6	39	19	6	25	68	49
Grafton	34	27	61	27	24	51	50	23
Mannus	20	7	27	19	7	26	24	5
Metropolitan	235	87	322	152	79	231	190	38
Metropolitan Mid-week	102	52	154	45	52	97	190	145
Tamworth	16	3	19	11	3	14	15	4
Tomago	85	38	123	61	36	97	96	35
Windsor	84	25	109	64	24	88	60	-4
Wollongong	85	24	109	67	23	90	82	15
Total Males	829	287	1116	538	271	809	863	325

Administration**	4	0	4	0	0	0	0	0
Bathurst	6	0	6	5	0	5	10	5
Norma Parker	38	18	56	25	14	39	30	5
Norma Parker Mid-week	20	6	26	8	4	12	30	22
Mannus	4	0	4	4	0	4	6	2
Tomago	9	2	11	5	2	7	20	15
Wollongong	4	2	6	4	1	5	10	6
Total Females	85	28	113	51	21	72	106	55

TOTAL P.D.'S	914	315	1229	589	292	881	969	380
---------------------	------------	------------	-------------	------------	------------	------------	------------	------------

* Number of free beds calculated on the numbers attending in Stage 1 and assuming uncrowded conditions.

Amended 25 April, 1999.

** Administration includes long term absentees and long term sick.

Number of fine defaulters attending periodic detention = 0.

The total number of people with warrants comprises:

Number attending		809 M+	72 F =	881
Number in full-time custody	sentenced-one month or less	1 M+	0 F =	1
	sentenced-more than one month	2 M+	1 F =	3
	remand	16 M+	0 F =	16
Number on appeal with bail		3 M+	0 F =	3
Number absent - leave applied for	- sick	42 M+	11 F =	53
	- other	33 M+	7 F =	40
Total absent - reasons known		97 M+	19 F =	116
Number absent without leave	- no reason given	114 M+	12 F =	126
	- legal action pending	76 M+	10 F =	86
	- appealing Sec 25 cancellation	20 M+	0 F =	20
Total absent without leave		210 M+	22 F =	232
Total number of people with warrants		1116 M+	113 F =	1229

WEEKLY STATES FOR THE WEEK ENDING:

3RD OCTOBER, 1999

TOTAL NUMBER OF FULL-TIME INMATES IN CORRECTIVE SERVICES CUSTODY = 7343
(Includes full-time inmates in correctional centres, transitional centres and police cells).

FULL-TIME INMATES IN CORRECTIONAL CENTRES AND PERIODIC DETAINEES

	Full-time Inmates		All Inmates Full-time + PD	
	No.	Date	No.	Date
State for this week	7312	03/10/1999	8598	03/10/1999
State for previous week	7318	26/09/1999	8562	26/09/1999
Highest weekly state, year ending previous week	7334	05/09/1999	8606	12/09/1999
Lowest weekly state, year ending previous week	6665	11/10/1998	8093	27/09/1998

Full-time Custody

Total full-time inmates 6720 (at DOCS institutions) + 592 (at Junee) = 7312

Included in the above total:

Total number of inmates	6875 M+	437 F=	7312 (including 592 at Junee)
Number of sentenced inmates (excluding appellants)	5055 M+	266 F=	5321 (including 526 at Junee)
Number of fine defaulters (in gaol for no other reason)	1 M+	0 F=	1 (including 0 at Junee)
Number of inmates on appeal	564 M+	61 F=	625 (including 46 at Junee)
Number of inmates on remand or for trial	1256 M+	110 F=	1366 (including 20 at Junee)
Number of inmates as deportees (included in remands)	42 M+	0 F=	42 (including 0 at Junee)
Number of juveniles under 18 years	1 M+	1 F=	2 (including 0 at Junee)

Periodic Detention

Number of people with warrants	1170 M+	116 F=	1286
Number of people attending periodic detention	806 M+	76 F=	882

Persons subject to a HOME DETENTION ORDER as at 1st September, 1999 = 104M + 23F = 127.

Inmates held in NSW Police Cells not already counted as a temporary absentee from a correctional centre *							
		Unsentenced		Sentenced		TOTAL	
		M	F	M	F	M	F
Sydney Police Centre	=	0	0	1	0	1	0
Dubbo Police Centre	=	2	0	0	0	2	0
Moree Police Centre	=	0	0	0	0	0	0
Port Macquarie Police Centres	=	3	0	0	0	3	0
Newcastle Police Centre	=	7	0	0	0	7	0
Lismore Police Centre	=	0	0	0	0	0	0

* Inmates are not included in the full-time custody total.

Parramatta Transitional Centre*	
Total Number of sentenced inmates	= 18 (including 0 on appeal)

* Inmates at the Transitional Centre are not included in the total number for full-time inmates in correctional centres

NUMBER OF PEOPLE WITH COMMUNITY BASED ORDERS AS AT 1ST OCTOBER, 1999

Supervision	8770 M+	1857 F=	10627
Reparation (eg Community Service Order)	4608 M+	858 F=	5466
Fine Substitution	284 M+	53 F=	337
Post Prison Orders (eg Parole)	2678 M+	236 F=	2914
Other Orders (eg Bail Supervision, Home Detention)	347 M+	94 F=	441
Total Offenders **	14939 M+	2772 F=	17711

** Some offenders are subject to orders in more than one category.

WEEKLY STATES AT MIDNIGHT ON: 3RD OCTOBER, 1999

FULL-TIME INMATES

	INMATES					Accomm: Oper. Capcty*	Accom +/-**	Segregation		Protection	
	Males		Females		Total			M	F	M	F
	U/S	S	U/S	S							
Goulburn (Maximum)	78	295	-	-	373	408	35	22	-	178	-
Long Bay Complex:											
- Special Purpose Centre	16	24	-	-	40	41	1	-	-	-	-
- L. Bay D.D. Unit	6	7	-	-	13	18	5	-	-	-	-
Long Bay Hospital:						120	2				
- L. Bay Hospital - Med.	10	17	-	-	27						
- L. Bay Hospital - Psych.	28	58	-	-	86						
- Hospital Annexes	2	3	-	-	5						
- Metro Medical Transient Centre	134	184	-	-	318	332	14	11	-	142	-
Malabar Special Programs:											
- Special Care Unit	-	-	-	-	0	27	27	-	-	-	-
- Kevin Waller Unit	2	9	-	-	11	15	4	-	-	-	-
- Lifestyles Unit	1	7	-	-	8	8	0	-	-	-	-
- Alexander Maconochie	-	-	-	-	0	10	10	-	-	-	-
- Area 3	16	154	-	-	170	180	10	-	-	-	-
- Area 4	26	79	-	-	105	120	15	-	-	46	-
- Assessment Unit	11	43	-	-	54	60	6	-	-	-	-
Lithgow	53	274	-	-	327	335	8	7	-	59	-
Metro Remand & Reception	694	193	-	-	887	917	30	27	-	163	-
Cessnock (Maximum)	60	46	-	-	106	127	21	3	-	30	-
Sub-total	1137	1393	0	0	2530	2718	188	70	0	618	0
Bathurst (Medium)	72	188	1	1	262	260	-2	2	-	39	-
Broken Hill	10	45	1	3	59	50	-9	-	-	-	-
Grafton (Medium)	56	82	1	-	139	148	9	-	-	13	-
Mulawa	-	-	130	151	281	270	-11	-	-	-	2
Parklea (Medium)	119	179	-	-	298	312	14	7	-	9	-
Junee (Medium)	61	435	-	-	496	500	4	3	-	478	-
Tamworth	24	34	-	-	58	64	6	-	-	-	-
Sub-total	342	963	133	155	1593	1604	11	12	0	539	2
Berrima	6	58	-	-	64	65	1	-	-	-	-
Emu Plains	-	-	35	99	134	138	4	-	-	-	-
- Work Release	-	-	-	-							
Silverwater	58	303	-	-	413	450	37	-	-	-	-
- Work Release	-	52	-	-							
Parklea (Minimum)	4	48	-	-	57	88	31	-	-	-	-
- Work Release	-	5	-	-							
Parramatta	115	194	-	-	309	330	21	-	-	-	-
Goulburn (Minimum)	9	97	-	-	106	103	-3	-	-	-	-
Bathurst (Minimum)	12	109	-	-	121	125	4	-	-	-	-
- Work Release	-	-	-	-							
Grafton (Minimum)	14	93	3	12	122	129	7	-	-	-	-
Industrial Training Centre	37	279	-	-	403	412	9	-	-	-	-
- Area C (Non-work Release)	6	54	-	-							
- Area C (Work Release)	-	27	-	-							
St Heliers	10	235	-	-	245	256	11	-	-	-	-
- St Heliers Mobile Camp	-	-	-	-							
Glen Innes	2	96	-	-	98	130	32	-	-	-	-
Mannus	5	139	-	-	144	164	20	-	-	-	-
Oberon	6	83	-	-	89	100	11	-	-	-	-
Kirkconnell	9	197	-	-	206	210	4	-	-	-	-
Junee (Minimum)	5	91	-	-	96	100	4	-	-	72	-
John Morony	13	217	-	-	237	239	2	-	-	-	-
- Work Release	-	7	-	-							
Cessnock (Minimum)	30	315	-	-	345	337	-8	-	-	-	-
Sub-total	341	2699	38	111	3189	3376	187	0	0	72	0
TOTAL FULL-TIME	1820	5055	171	266	7312	7698	386	82	0	1229	0

* Accommodation is the operational capacity, provided by the Classification and Placement Unit - amended 12th September, 1999 for Parramatta C.C. **Difference between the operational capacity and the number of inmates.

S=Sentenced inmates (not including appellants) U/S=Unsentenced inmates (including appellants, trials, remandees and deportees)

WEEKLY STATES FOR THE WEEK ENDING: 3RD OCTOBER, 1999

PERIODIC DETAINEES (P.D.'S)	People with warrants			Attending			No.*	Beds*
	Stage1	Stage2	Total	Stage1	Stage2	Total	Beds	+/-
Administration**	17	0	17	0	0	0	0	0
Bathurst	30	8	38	22	7	29	20	-2
Campbelltown	81	12	93	43	9	52	68	25
Campbelltown Mid-week	34	7	41	13	6	19	68	55
Grafton	32	26	58	28	24	52	50	22
Mannus	22	11	33	19	11	30	24	5
Metropolitan	275	86	361	176	74	250	190	14
Metropolitan Mid-week	105	46	151	47	44	91	190	143
Tamworth	20	2	22	13	2	15	15	2
Tomago	87	39	126	59	37	96	96	37
Windsor	84	25	109	60	25	85	60	0
Wollongong	96	25	121	63	24	87	82	19
Total Males	883	287	1170	543	263	806	863	320

Administration**	4	0	4	0	0	0	0	0
Bathurst	5	0	5	3	0	3	10	7
Norma Parker	35	21	56	25	18	43	30	5
Norma Parker Mid-week	21	5	26	8	2	10	30	22
Mannus	4	1	5	3	1	4	6	3
Tomago	9	2	11	5	2	7	20	15
Wollongong	5	4	9	5	4	9	10	5
Total Females	83	33	116	49	27	76	106	57

TOTAL P.D.'S	966	320	1286	592	290	882	969	377
---------------------	------------	------------	-------------	------------	------------	------------	------------	------------

* Number of free beds calculated on the numbers attending in Stage 1 and assuming uncrowded conditions.

Amended 25 April, 1999.

** Administration includes long term absentees and long term sick.

Number of fine defaulters attending periodic detention = 0.

The total number of people with warrants comprises:

Number attending		806 M+	76 F =	882
Number in full-time custody	sentenced-one month or less	0 M+	0 F =	0
	sentenced-more than one month	3 M+	1 F =	4
	remand	15 M+	1 F =	16
Number on appeal with bail		5 M+	0 F =	5
Number absent - leave applied for	- sick	49 M+	10 F =	59
	- other	42 M+	8 F =	50
Total absent - reasons known		114 M+	20 F =	134
Number absent without leave	- no reason given	139 M+	10 F =	149
	- legal action pending	84 M+	10 F =	94
	- appealing Sec 25 cancellation	27 M+	0 F =	27
Total absent without leave		250 M+	20 F =	270
Total number of people with warrants		1170 M+	116 F =	1286

WEEKLY STATES FOR THE WEEK ENDING:

7TH NOVEMBER, 1999

TOTAL NUMBER OF FULL-TIME INMATES IN CORRECTIVE SERVICES CUSTODY = 7268
 (Includes full-time inmates in correctional centres, transitional centres and police cells).

FULL-TIME INMATES IN CORRECTIONAL CENTRES AND PERIODIC DETAINEES

	Full-time Inmates		All Inmates Full-time + PD	
	No.	Date	No.	Date
State for this week	7234	07/11/1999	8595	07/11/1999
State for previous week	7261	31/10/1999	8595	31/10/1999
Highest weekly state, year ending previous week	7334	05/09/1999	8606	12/09/1999
Lowest weekly state, year ending previous week	6726	27/12/1998	8203	28/02/1999

Full-time Custody

Total full-time inmates 6652 (at DOCS institutions) + 582 (at June) = 7234

Included in the above total:

Total number of inmates	6809 M+	425 F=	7234 (including 582 at June)
Number of sentenced inmates (excluding appellants)	5038 M+	252 F=	5290 (including 520 at June)
Number of fine defaulters (in gaol for no other reason)	1 M+	0 F=	1 (including 0 at June)
Number of inmates on appeal	520 M+	63 F=	583 (including 48 at June)
Number of inmates on remand or for trial	1251 M+	110 F=	1361 (including 14 at June)
Number of inmates as deportees (included in remands)	51 M+	0 F=	51 (including 0 at June)
Number of juveniles under 18 years	0 M+	1 F=	1 (including 0 at June)

Periodic Detention

Number of people with warrants	1242 M+	119 F=	1361
Number of people attending periodic detention	831 M+	85 F=	916

Persons subject to a HOME DETENTION ORDER as at 1st November, 1999 = 102M + 28F = 130.

Inmates held in NSW Police Cells not already counted as a temporary absentee from a correctional centre *							
		Unsentenced		Sentenced		TOTAL	
		M	F	M	F	M	F
Sydney Police Centre	=	0	0	0	0	0	0
Dubbo Police Centre	=	0	0	0	0	0	0
Moree Police Centre	=	2	0	0	0	2	0
Port Macquarie Police Centre	=	4	0	0	0	4	0
Newcastle Police Centre	=	6	0	0	1	6	1
Lismore Police Centre	=	0	0	0	0	0	0
Queanbeyan Police Centre	=	0	0	0	0	0	0

* Inmates are not included in the full-time custody total.

Parramatta Transitional Centre*

Total Number of sentenced inmates = 21 (including 0 on appeal)

* Inmates at the Transitional Centre are not included in the total number for full-time inmates in correctional centres

NUMBER OF PEOPLE WITH COMMUNITY BASED ORDERS AS AT 1ST OCTOBER, 1999

Supervision	8770 M+	1857 F=	10627
Reparation (eg Community Service Order)	4608 M+	858 F=	5466
Fine Substitution	284 M+	53 F=	337
Post Prison Orders (eg Parole)	2678 M+	236 F=	2914
Other Orders (eg Bail Supervision, Home Detention)	347 M+	94 F=	441
Total Offenders **	14939 M+	2772 F=	17711

** Some offenders are subject to orders in more than one category.

WEEKLY STATES AT MIDNIGHT ON:

7TH NOVEMBER, 1999

FULL-TIME INMATES	INMATES					Accomm: Oper. Capcty*	Accom +/-**	Segregation		Protection	
	Males		Females		Total			M	F	M	F
	U/S	S	U/S	S							
Goulburn (Maximum)	42	306	-	-	348	408	60	23	-	161	-
Long Bay Complex:											
- Special Purpose Centre	18	22	-	-	40	41	1	-	-	-	-
- L. Bay D.D. Unit	4	12	-	-	16	18	2	-	-	-	-
Long Bay Hospital:						120	10				
- L. Bay Hospital - Med.	7	15	-	-	22						
- L. Bay Hospital - Psych.	21	64	-	-	85						
- Hospital Annexes	1	2	-	-	3						
- Metro Medical Transient Centre	129	174	-	-	303	332	29	7	-	137	-
- Malabar Special Programs:											
- Special Care Unit	-	-	-	-	0	27	27	-	-	-	-
- Kevin Waller Unit	-	10	-	-	10	15	5	-	-	-	-
- Lifestyles Unit	-	4	-	-	4	8	4	-	-	-	-
- Alexander Maconochie	-	-	-	-	0	10	10	-	-	-	-
- Area 3	14	156	-	-	170	180	10	-	-	-	-
- Area 4	42	70	-	-	112	130	18	-	-	34	-
- Assessment Unit	10	37	-	-	47	60	13	-	-	-	-
- Acute Crisis Management Unit	-	4	-	-	4	10	6	-	-	-	-
Lithgow	46	270	-	-	316	335	19	12	-	58	-
Metro Remand & Reception	704	193	-	-	897	917	20	10	-	170	-
Cessnock (Maximum)	60	51	-	-	111	127	16	5	-	37	-
Sub-total	1098	1390	0	0	2488	2738	250	57	0	597	0
Bathurst (Medium)	81	170	1	-	252	273	21	3	-	33	-
Broken Hill	15	43	2	2	62	50	-12	-	-	2	-
Grafton (Medium)	56	85	-	-	141	148	7	1	-	13	-
Mulawa	-	-	129	134	263	270	7	-	2	-	24
Parklea (Medium)	122	170	-	-	292	312	20	8	-	12	-
June (Medium)	58	424	-	-	482	500	18	2	-	461	-
Tamworth	26	34	-	-	60	64	4	-	-	-	-
Sub-total	358	926	132	136	1552	1617	65	14	2	521	24
Berrima	6	59	-	-	65	65	0	-	-	-	-
Emu Plains	-	-	36	102	138	138	0	-	-	-	-
- Work Release	-	-	-	-							
Silverwater	47	320	-	-	414	450	36	-	-	-	-
- Work Release	-	47	-	-							
Parklea (Minimum)	4	47	-	-	56	88	32	-	-	-	-
- Work Release	-	5	-	-							
Parramatta	128	173	-	-	301	310	9	-	-	-	-
Goulburn (Minimum)	5	101	-	-	106	103	-3	-	-	-	-
Bathurst (Minimum)	10	111	-	-	121	125	4	-	-	-	-
- Work Release	-	-	-	-							
Grafton (Minimum)	11	98	5	14	128	129	1	-	-	-	-
Industrial Training Centre	20	256	-	-	360	412	52	-	-	-	-
- Area C (Non-work Release)	3	48	-	-							
- Area C (Work Release)	-	33	-	-							
St Heliers	9	236	-	-	245	256	11	-	-	-	-
- St Heliers Mobile Camp	-	-	-	-							
Glen Innes	1	97	-	-	98	130	32	-	-	-	-
Mannus	6	146	-	-	152	164	12	-	-	-	-
Oberon	4	91	-	-	95	100	5	-	-	-	-
Kirkconnell	9	196	-	-	205	210	5	-	-	-	-
June (Minimum)	4	96	-	-	100	100	0	-	-	77	-
John Morony	17	236	-	-	261	239	-22	-	-	-	-
- Work Release	-	8	-	-							
Cessnock (Minimum)	31	311	-	-	342	337	-5	-	-	-	-
Ivanhoe (Warakirri) Work Centre	-	7	-	-	7	10	3	-	-	-	-
Sub-total	315	2722	41	116	3194	3366	172	0	0	77	0
TOTAL FULL-TIME	1771	5038	173	252	7234	7721	487	71	2	1195	24

* Accommodation is the operational capacity, provided by the Classification and Placement Unit - amended 17th October, 1999 for Ivanhoe Work Centre.

**Difference between the operational capacity and the number of inmates.

S=Sentenced inmates (not including appellants) U/S=Unsentenced inmates (including appellants, trials, remandees and deportees)

WEEKLY STATES FOR THE WEEK ENDING: 7TH NOVEMBER, 1999

PERIODIC

DETAINEES (P.D.'S)

	People with warrants			Attending			No.* Beds	Beds* +/-
	Stage1	Stage2	Total	Stage1	Stage2	Total		
Administration**	32	0	32	0	0	0	0	0
Bathurst	36	4	40	24	4	28	20	-4
Campbelltown	81	11	92	45	9	54	68	23
Campbelltown Mid-week	35	9	44	16	9	25	68	52
Grafton	34	25	59	30	21	51	50	20
Mannus	26	11	37	22	11	33	24	2
Metropolitan	314	87	401	181	75	256	190	9
Metropolitan Mid-week	84	43	127	46	38	84	190	144
Tamworth	20	6	26	13	5	18	15	2
Tomago	95	37	132	66	34	100	96	30
Windsor	100	22	122	72	21	93	60	-12
Wollongong	99	31	130	60	29	89	82	22
Total Males	956	286	1242	575	256	831	863	288

Administration**	4	0	4	0	0	0	0	0
Bathurst	3	3	6	1	2	3	10	9
Norma Parker	36	21	57	25	19	44	30	5
Norma Parker Mid-week	20	6	26	11	4	15	30	19
Mannus	4	0	4	4	0	4	6	2
Tomago	9	2	11	7	2	9	20	13
Wollongong	5	6	11	4	6	10	10	6
Total Females	81	38	119	52	33	85	106	54

TOTAL P.D.'S	1037	324	1361	627	289	916	969	342
---------------------	-------------	------------	-------------	------------	------------	------------	------------	------------

* Number of free beds calculated on the numbers attending in Stage 1 and assuming uncrowded conditions.

Amended 25 April, 1999.

** Administration includes long term absentees and long term sick.

Number of fine defaulters attending periodic detention = 0.

The total number of people with warrants comprises:

Number attending		831 M+	85 F =	916
Number in full-time custody	sentenced-one month or less	0 M+	0 F =	0
	sentenced-more than one month	5 M+	1 F =	6
	remand	7 M+	0 F =	7
Number on appeal with bail		6 M+	0 F =	6
Number absent - leave applied for	- sick	57 M+	3 F =	60
	- other	43 M+	5 F =	48
Total absent - reasons known		118 M+	9 F =	127
Number absent without leave	- no reason given	160 M+	15 F =	175
	- legal action pending	102 M+	10 F =	112
	- appealing Sec 25 cancellation	31 M+	0 F =	31
Total absent without leave		293 M+	25 F =	318
Total number of people with warrants		1242 M+	119 F =	1361

WEEKLY STATES FOR THE WEEK ENDING:

5TH DECEMBER, 1999.

TOTAL NUMBER OF FULL-TIME INMATES IN CORRECTIVE SERVICES CUSTODY = 7247
 (includes full-time inmates in correctional centres, transitional centres and police cells).

FULL-TIME INMATES IN CORRECTIONAL CENTRES AND PERIODIC DETAINEES

	Full-time Inmates		All Inmates Full-time + PD	
	No.	Date	No.	Date
State for this week	7220	05/12/1999	# 8551	05/12/1999
State for previous week	7256	28/11/1999	8591	28/11/1999
Highest weekly state, year ending previous week	7334	05/09/1999	8606	12/09/1999
Lowest weekly state, year ending previous week	6726	27/12/1998	8203	28/02/1999

Full-time Custody

Preliminary figure

Total full-time inmates 6634 (at DOCS institutions) + 586 (at June) = 7220

Included in the above total:

Total number of inmates	6779 M+	441 F=	7220 (including 586 at June)
Number of sentenced inmates (excluding appellants)	5034 M+	257 F=	5291 (including 517 at June)
Number of fine defaulters (in gaol for no other reason)	0 M+	0 F=	0 (including 0 at June)
Number of inmates on appeal	516 M+	72 F=	588 (including 51 at June)
Number of inmates on remand or for trial	1229 M+	112 F=	1341 (including 18 at June)
Number of inmates as deportees (included in remands)	49 M+	0 F=	49 (including 0 at June)
Number of juveniles under 18 years	0 M+	1 F=	1 (including 0 at June)

Periodic Detention

Number of people with warrants	1226 M+	111 F=	1337
Number of people attending periodic detention	847 M+	66 F=	913

Persons subject to a HOME DETENTION ORDER as at 1ST DECEMBER, 1999 = 106M + 26F = 132.

Inmates held overnight in NSW Police Cells not already counted as a temporary absentee from a correctional centre *							
		Unsentenced		Sentenced		TOTAL	
		M	F	M	F	M	F
Sydney Police Centre	=	0	0	1	0	1	0
Dubbo Police Centre	=	3	0	0	0	3	0
Moree Police Centre	=	1	0	0	0	1	0
Port Macquarie Police Centre	=	0	0	0	0	0	0
Newcastle Police Centre	=	2	0	1	0	3	0
Lismore Police Centre	=	0	0	0	0	0	0
Queanbeyan Police Centre	=	0	0	0	0	0	0

* Inmates are not included in the full-time custody total.

Parramatta Transitional Centre*

Total Number of sentenced inmates = 19 (including 0 on appeal)

* Inmates at the Transitional Centre are not included in the total number for full-time inmates in correctional centres

NUMBER OF PEOPLE WITH COMMUNITY BASED ORDERS AS AT 1ST NOVEMBER, 1999.

Supervision	8761 M+	1848 F=	10609
Reparation (eg Community Service Order)	4573 M+	859 F=	5432
Fine Substitution	284 M+	53 F=	337
Post Prison Orders (eg Parole)	2669 M+	256 F=	2925
Other Orders (eg Bail Supervision, Home Detention)	360 M+	89 F=	449
Total Offenders **	14907 M+	2768 F=	17675

** Some offenders are subject to orders in more than one category.

WEEKLY STATES AT MIDNIGHT ON: 5TH DECEMBER, 1999.

	INMATES					Accomm: Oper. Capcty*	Accom +/-**	Segregation		Protection	
	Males		Females		Total			M	F	M	F
	U/S	S	U/S	S							
Goulburn (Maximum)	53	309	-	-	362	408	46	25	-	163	-
Long Bay Complex:											
- Special Purpose Centre	17	22	-	-	39	41	2	-	-	-	-
- L. Bay D.D. Unit	3	14	-	-	17	18	1	-	-	-	-
Long Bay Hospital:						120	14				
- L. Bay Hospital - Med.	5	12	-	-	17						
- L. Bay Hospital - Psych.	21	64	-	-	85						
- Hospital Annexes	3	1	-	-	4						
- Metro Medical Transient Centre	118	180	-	-	298	332	34	7	-	139	-
- Malabar Special Programs:											
- Special Care Unit	-	-	-	-	0	27	27	-	-	-	-
- Kevin Waller Unit	-	12	-	-	12	15	3	-	-	-	-
- Lifestyles Unit	3	4	-	-	7	8	1	-	-	-	-
- Alexander Maconochie	-	-	-	-	0	10	10	-	-	-	-
- Area 3	14	146	-	-	160	180	20	-	-	-	-
- Area 4	38	76	-	-	114	130	16	-	-	74	-
- Assessment Unit	12	45	-	-	57	60	3	-	-	-	-
- Acute Crisis Management Unit	3	5	-	-	8	10	2	-	-	-	-
Lithgow	42	272	-	-	314	335	21	4	-	59	-
Metro Remand & Reception	671	215	-	-	886	917	31	14	-	151	-
Cessnock (Maximum)	56	49	-	-	105	127	22	4	-	37	-
Sub-total	1059	1426	0	0	2485	2738	253	54	0	623	0
Bathurst (Medium)	74	185	1	-	260	273	13	2	-	40	-
Broken Hill	11	32	1	2	46	50	4	-	-	-	-
Grafton (Medium)	67	77	-	-	144	148	4	-	-	17	-
Mulawa	-	-	141	144	285	270	-15	-	-	-	31
Parklea (Medium)	114	155	-	-	269	312	43	3	-	13	-
June (Medium)	64	427	-	-	491	500	9	3	-	448	-
Tamworth	23	37	-	-	60	64	4	1	-	-	-
Sub-total	353	913	143	146	1555	1617	62	9	0	518	31
Berrima	4	61	-	-	65	65	0	-	-	-	-
Emu Plains	-	-	39	95	137	138	1	-	-	-	-
- Work Release	-	-	-	3							
Silverwater	45	318	-	-	413	450	37	-	-	-	-
- Work Release	-	50	-	-							
Parklea (Minimum)	2	72	-	-	81	88	7	-	-	-	-
- Work Release	-	7	-	-							
Parramatta	139	159	-	-	298	310	12	-	-	-	-
Goulburn (Minimum)	5	102	-	-	107	103	-4	-	-	-	-
Bathurst (Minimum)	9	111	-	-	120	125	5	-	-	-	-
- Work Release	-	-	-	-							
Grafton (Minimum)	8	97	2	13	120	129	9	-	-	-	-
Industrial Training Centre	19	224	-	-	327	345	18	-	-	-	-
- Area C (Non-work Release)	4	42	-	-							
- Area C (Work Release)	-	38	-	-							
St Heliers	11	230	-	-	241	256	15	-	-	-	-
- St Heliers Mobile Camp	-	-	-	-							
Glen Innes	-	103	-	-	103	130	27	-	-	-	-
Mannus	5	149	-	-	154	164	10	-	-	-	-
Oberon	4	89	-	-	93	100	7	-	-	-	-
Kirkconnell	11	191	-	-	202	210	8	-	-	-	-
June (Minimum)	5	90	-	-	95	100	5	-	-	70	-
John Morony	22	215	-	-	263	289	26	-	-	-	-
- Honour Unit (Non work release)	-	16	-	-							
- Honour Unit (Work release)	-	10	-	-							
Cessnock (Minimum)	40	307	-	-	347	337	-10	-	-	-	-
Ivanhoe (Warakirri) Work Centre	-	14	-	-	14	20	6	-	-	-	-
Sub-total	333	2695	41	111	3180	3359	179	0	0	70	0
TOTAL FULL-TIME	1745	5034	184	257	7220	7714	494	63	0	1211	31

* Accommodation is the operational capacity, provided by the Classification and Placement Unit - amended 23rd November, 1999 for Industrial Training Centre (17 wing closed).

**Difference between the operational capacity and the number of inmates.

S=Sentenced inmates (not including appellants) U/S=Unsentenced inmates (including appellants, trials, remandees and deportees)

WEEKLY STATES FOR THE WEEK ENDING: 5TH DECEMBER 1999.

PERIODIC DETAINEES (P.D.'S)	People with warrants			Attending			No.* Beds	Beds* +/-
	Stage1	Stage2	Total	Stage1	Stage2	Total		
Administration**	32	0	32	0	0	0	0	0
Bathurst	37	2	39	23	2	25	20	-3
Campbelltown	75	11	86	44	11	55	68	24
Campbelltown Mid-week	37	7	44	23	5	28	68	45
Grafton	38	23	61	26	18	44	50	24
Mannus	25	13	38	19	12	31	24	5
Metropolitan	316	82	398	202	78	280	190	-12
Metropolitan Mid-week	96	36	132	59	34	93	190	131
Tamworth	22	5	27	11	5	16	15	4
Tomago	93	39	132	61	36	97	96	35
Windsor	94	24	118	74	23	97	60	-14
Wollongong	87	32	119	51	30	81	82	31
Total Males	952	274	1226	593	254	847	863	270

Administration**	12	0	12	0	0	0	0	0
Bathurst #	2	4	6	2	4	6	10	8
Norma Parker	28	20	48	14	18	32	30	16
Norma Parker Mid-week	16	5	21	8	4	12	30	22
Mannus	3	1	4	2	1	3	6	4
Tomago	8	2	10	4	2	6	20	16
Wollongong	4	6	10	1	6	7	10	9
Total Females	73	38	111	31	35	66	106	75

TOTAL P.D.'S	1025	312	1337	624	289	913	969	345
---------------------	-------------	------------	-------------	------------	------------	------------	------------	------------

* Number of free beds calculated on the numbers attending in Stage 1 and assuming uncrowded conditions.

Amended 25 April, 1999.

** Administration includes long term absentees and long term sick. # Preliminary figures

Number of fine defaulters attending periodic detention = 0.

The total number of people with warrants comprises:

Number attending		847 M+	66 F =	913
Number in full-time custody	sentenced-one month or less	1 M+	0 F =	1
	sentenced-more than one month	7 M+	0 F =	7
	remand	6 M+	0 F =	6
Number on appeal with bail		7 M+	0 F =	7
Number absent - leave applied for	- sick	58 M+	8 F =	66
	- other	44 M+	5 F =	49
Total absent - reasons known		123 M+	13 F =	136
Number absent without leave	- no reason given	174 M+	23 F =	197
	- legal action pending	82 M+	8 F =	90
	- appealing Sec 25 cancellation	0 M+	1 F =	1
Total absent without leave		256 M+	32 F =	288
Total number of people with warrants		1226 M+	111 F =	1337

WEEKLY STATES FOR THE WEEK ENDING:

2ND JANUARY, 2000.

TOTAL NUMBER OF FULL-TIME INMATES IN CORRECTIVE SERVICES CUSTODY = 7197
(Includes full-time inmates in correctional centres, transitional centres and police cells).

FULL-TIME INMATES IN CORRECTIONAL CENTRES AND PERIODIC DETAINEES

	Full-time Inmates		All Inmates Full-time + PD	
	No.	Date	No.	Date
State for this week	7167	02/01/2000	#	02/01/2000
State for previous week	7107	26/12/1999	#	26/12/1999
Highest weekly state, year ending previous week	7334	05/09/1999	8606	12/09/1999
Lowest weekly state, year ending previous week	6726	27/12/1999	8203	28/02/1999

Full-time Custody

Total full-time inmates 6570 (at DOCS institutions) + 597 (at Junee) = 7167

Included in the above total:

Total number of inmates	6752 M+	415 F=	7167 (including 597 at Junee)
Number of sentenced inmates (excluding appellants)	4927 M+	252 F=	5179 (including 525 at Junee)
Number of fine defaulters (in gaol for no other reason)	1 M+	0 F=	1 (including 0 at Junee)
Number of inmates on appeal	543 M+	65 F=	608 (including 46 at Junee)
Number of inmates on remand or for trial	1282 M+	98 F=	1380 (including 26 at Junee)
Number of inmates as deportees (included in remands)	43 M+	0 F=	43 (including 0 at Junee)
Number of juveniles under 18 years	0 M+	1 F=	1 (including 0 at Junee)

Periodic Detention

Due to Christmas and New Year only the Metropolitan Mid-week and Norma Parker Mid-Week Periodic Detention Centres were open these weeks.

Persons subject to a HOME DETENTION ORDER as at 1st January, 2000 = 121M + 20F = 141.

Inmates held overnight in NSW Police Cells not already counted as a temporary absentee from a correctional centre *							
		Unsentenced		Sentenced		TOTAL	
		M	F	M	F	M	F
Sydney Police Centre	=	0	0	0	0	0	0
Dubbo Police Centre	=	0	0	0	0	0	0
Moree Police Centre	=	4	0	0	0	4	0
Port Macquarie Police Centre	=	4	0	0	0	4	0
Newcastle Police Centre	=	3	1	0	0	3	1
Lismore Police Centre	=	0	0	0	0	0	0
Queanbeyan Police Centre	=	0	0	0	0	0	0

* Inmates are not included in the full-time custody total.

Parramatta Transitional Centre*

Total Number of sentenced inmates = 18 (including 0 on appeal)

* Inmates at the Transitional Centre are not included in the total number for full-time inmates in correctional centres

NUMBER OF PEOPLE WITH COMMUNITY BASED ORDERS AS AT 1ST NOVEMBER, 1999.

Supervision	8761 M+	1848 F=	10609
Reparation (eg Community Service Order)	4573 M+	859 F=	5432
Fine Substitution	284 M+	53 F=	337
Post Prison Orders (eg Parole)	2669 M+	256 F=	2925
Other Orders (eg Bail Supervision, Home Detention)	360 M+	89 F=	449
Total Offenders **	14907 M+	2768 F=	17675

** Some offenders are subject to orders in more than one category.

WEEKLY STATES AT MIDNIGHT ON:

2ND JANUARY, 2000.

FULL-TIME
INMATES

	INMATES					Accomm: Oper. Capcty*	Accom +/-**	Segreg- ation		Protect- ion	
	Males		Females		Total			M	F	M	F
	U/S	S	U/S	S							
Goulburn (Maximum)	47	311	-	-	358	408	50	31	-	156	-
Long Bay Complex:											
- Special Purpose Centre	15	21	-	-	36	41	5	-	-	-	-
- L. Bay D.D. Unit	2	14	-	-	16	18	2	-	-	-	-
Long Bay Hospital:						120	12				
M - L. Bay Hospital - Med.	7	13	-	-	20						
A - L. Bay Hospital - Psych.	27	61	-	-	88						
X - Hospital Annexes	-	-	-	-	0						
I - Metro Medical Transient Centre	122	163	-	-	285	332	47	8	-	136	-
M - Malabar Special Programs:											
U - Special Care Unit	-	-	-	-	0	27	27	-	-	-	-
M - Kevin Waller Unit	3	8	-	-	11	15	4	-	-	-	-
- Lifestyles Unit	2	3	-	-	5	8	3	-	-	-	-
- Alexander Maconochie	-	-	-	-	0	10	10	-	-	-	-
- Area 3	14	151	-	-	165	180	15	-	-	-	-
- Area 4	47	62	-	-	109	130	21	-	-	76	-
- Assessment Unit	12	46	-	-	58	60	2	-	-	-	-
- Acute Crisis Management Unit	2	5	-	-	7	10	3	-	-	-	-
Lithgow	46	274	-	-	320	335	15	#8	-	#60	-
Metro Remand & Reception	715	147	-	-	862	917	55	12	-	141	-
Cessnock (Maximum)	65	49	-	-	114	127	13	2	-	40	-
Sub-total	1126	1328	0	0	2454	2738	284	61	0	609	0
M Bathurst (Medium)	68	191	-	-	259	273	14	3	-	39	-
Broken Hill	13	31	1	2	47	50	3	-	-	1	-
E Grafton (Medium)	57	93	1	-	151	148	-3	-	-	#18	-
D Mulawa	-	-	125	134	259	270	11	-	6	-	29
I Parklea (Medium)	124	159	-	-	283	312	29	6	-	13	-
U Junee (Medium)	69	430	-	-	499	500	1	2	-	467	-
M Tamworth	28	20	-	-	48	64	16	1	-	2	-
Sub-total	359	924	127	136	1546	1617	71	12	6	540	29
Berrima	5	65	-	-	70	65	-5	-	-	-	-
Emu Plains	-	-	32	103	137	138	1	-	-	-	-
- Work Release	-	-	-	2							
Silverwater	50	316	-	-	412	450	38	-	-	-	-
- Work Release	-	46	-	-							
M Parklea (Minimum)	1	58	-	-	70	88	18	-	-	-	-
I - Work Release	-	11	-	-							
N Parramatta	133	138	-	-	271	310	39	-	-	-	-
I Goulburn (Minimum)	5	97	-	-	102	103	1	-	-	-	-
M Bathurst (Minimum)	9	103	-	-	112	125	13	-	-	-	-
U - Work Release	-	-	-	-							
M Grafton (Minimum)	11	97	4	11	123	129	6	-	-	-	-
Industrial Training Centre	20	227	-	-	329	345	16	-	-	-	-
- Area C (Non-work Release)	3	42	-	-							
- Area C (Work Release)	-	37	-	-							
St Heliers	12	235	-	-	247	256	9	-	-	-	-
- St Heliers Mobile Camp	-	-	-	-							
Glen Innes	3	107	-	-	110	130	20	-	-	-	-
Mannus	5	157	-	-	162	164	2	-	-	-	-
Oberon	4	87	-	-	91	100	9	-	-	-	-
Kirkconnell	12	191	-	-	203	210	7	2	-	-	-
Junee (Minimum)	3	95	-	-	98	100	2	-	-	66	-
John Morony	26	210	-	-	266	289	23	-	-	-	-
- Honour Unit (Non work release)	-	22	-	-							
- Honour Unit (Work release)	-	8	-	-							
Cessnock (Minimum)	37	307	-	-	344	337	-7	-	-	-	-
Ivanhoe (Warakirri) Work Centre	1	19	-	-	20	20	0	-	-	-	-
Sub-total	340	2675	36	116	3167	3359	192	2	0	66	0
TOTAL FULL-TIME	1825	4927	163	252	7167	7714	547	75	6	1215	29

* Accommodation is the operational capacity, provided by the Classification and Placement Unit - amended 23rd Nov for Industrial Training Centre (17 wing closed) **Difference between the operational capacity and the number of inmates. # Preliminary figure
S=Sentenced inmates (not including appellants) U/S=Unsentenced inmates (including appellants, trials, remandees and deportees)

WEEKLY STATES FOR THE WEEK ENDING: 2ND JANUARY, 2000.

PERIODIC DETENTION

During this week, only the Metropolitan and Norma Parker Mid-week Periodic Detention Centres were open.
All the other Periodic Detention Centres were closed because of New Year.

WEEKLY STATES FOR THE WEEK ENDING:

6th FEBRUARY, 2000.

TOTAL NUMBER OF FULL-TIME INMATES IN CORRECTIVE SERVICES CUSTODY = 7326
 (Includes full-time inmates in correctional centres, transitional centres and police cells).

FULL-TIME INMATES IN CORRECTIONAL CENTRES AND PERIODIC DETAINEES

	Full-time Inmates		All Inmates Full-time + PD	
	No.	Date	No.	Date
State for this week	7297	06/02/2000	8572	06/02/2000
State for previous week	7246	30/01/2000	8523	30/01/2000
Highest weekly state, year ending previous week	7334	05/09/1999	8606	12/09/1999
Lowest weekly state, year ending previous week	6800	07/02/1999	8203	28/02/1999

Full-time Custody

Total full-time inmates 6709 (at DOCS institutions) + 588 (at Junee) = 7297

Included in the above total:

Total number of inmates	6843 M+	454 F=	7297 (including 588 at Junee)
Number of sentenced inmates (excluding appellants)	4868 M+	251 F=	5119 (including 513 at Junee)
Number of fine defaulters (in gaol for no other reason)	1 M+	0 F=	1 (including 0 at Junee)
Number of inmates on appeal	575 M+	67 F=	642 (including 60 at Junee)
Number of inmates on remand or for trial	1400 M+	136 F=	1536 (including 15 at Junee)
Number of inmates as deportees (included in remands)	44 M+	0 F=	44 (including 0 at Junee)
Number of juveniles under 18 years	0 M+	1 F=	1 (including 0 at Junee)

Periodic Detention

Number of people with warrants	1162 M+	113 F=	1275
Number of people attending periodic detention	754 M+	64 F=	818

Persons subject to a HOME DETENTION ORDER as at 1st January, 2000 = 121M + 20F = 141.

Inmates held overnight in NSW Police Cells not already counted as a temporary absentee from a correctional centre*							
		Unsentenced		Sentenced		TOTAL	
		M	F	M	F	M	F
Sydney Police Centre	=	0	0	0	0	0	0
Dubbo Police Centre	=	1	0	0	0	1	0
Moree Police Centre	=	2	0	0	0	2	0
Port Macquarie Police Centre	=	3	0	0	0	3	0
Newcastle Police Centre	=	4	1	1	0	5	1
Lismore Police Centre	=	0	0	0	0	0	0
Queanbeyan Police Centre	=	0	0	0	0	0	0

* Inmates are not included in the full-time custody total.

Parramatta Transitional Centre*

Total Number of sentenced inmates = 17 (including 0 on appeal)

* Inmates at the Transitional Centre are not included in the total number for full-time inmates in correctional centres

NUMBER OF PEOPLE WITH COMMUNITY BASED ORDERS AS AT 1ST NOVEMBER, 1999.

Supervision	8761 M+	1848 F=	10609
Reparation (eg Community Service Order)	4573 M+	859 F=	5432
Fine Substitution	284 M+	53 F=	337
Post Prison Orders (eg Parole)	2669 M+	256 F=	2925
Other Orders (eg Bail Supervision, Home Detention)	360 M+	89 F=	449
Total Offenders**	14907 M+	2768 F=	17675

** Some offenders are subject to orders in more than one category.

WEEKLY STATES AT MIDNIGHT ON:

6th FEBRUARY, 2000.

FULL-TIME INMATES	INMATES				Total	Accomm: Oper. Capcty*	Accom +/-**	Segreg- ation		Protect- ion	
	Males		Females					M	F	M	F
	U/S	S	U/S	S							
Goulburn (Maximum)	80	306	-	-	386	408	22	55	-	168	-
Long Bay Complex:											
- Special Purpose Centre	19	19	-	-	38	41	3	-	-	-	-
- L. Bay D.D. Unit	4	12	-	-	16	18	2	-	-	-	-
Long Bay Hospital:						120	16				
M - L. Bay Hospital - Med.	4	13	-	-	17			-	-	-	-
A - L. Bay Hospital - Psych.	28	59	-	-	87			-	-	-	-
X - Hospital Annexes	-	-	-	-	0			-	-	-	-
I - Metro Medical Transient Centre	127	175	-	-	302	332	30	12	-	136	-
M - Malabar Special Programs:											
U - Special Care Unit	-	-	-	-	0	27	27	-	-	-	-
M - Kevin Waller Unit	2	10	-	-	12	15	3	-	-	-	-
- Lifestyles Unit	1	7	-	-	8	8	0	-	-	-	-
- Alexander Maconochie	-	-	-	-	0	10	10	-	-	-	-
- Area 3	13	154	-	-	167	180	13	-	-	-	-
- Area 4	51	68	-	-	119	130	11	-	-	78	-
- Assessment Unit	15	44	-	-	59	60	1	-	-	-	-
- Acute Crisis Management Unit	4	6	-	-	10	10	0	-	-	-	-
Lithgow	51	254	-	-	305	335	30	5	-	59	-
Metro Remand & Reception	744	149	-	-	893	917	24	14	-	158	-
Cessnock (Maximum)	64	46	-	-	110	127	17	4	-	31	-
Sub-total	1207	1322	0	0	2529	2738	209	90	0	630	0
Bathurst (Medium)	73	191	2	-	266	273	7	4	-	40	-
M Broken Hill	17	37	-	2	56	50	-6	-	-	1	-
E Grafton (Medium)	65	81	-	-	146	148	2	1	-	16	-
D Mulawa	-	-	158	132	290	270	-20	-	3	-	30
I Parklea (Medium)	127	148	-	-	275	312	37	2	-	14	-
U Junee (Medium)	68	424	-	-	492	500	8	1	-	447	-
M Tamworth	30	28	-	-	58	64	6	-	-	-	-
Sub-total	380	909	160	134	1583	1617	34	8	3	518	30
Berrima	6	60	-	-	66	65	-1	-	-	-	-
Emu Plains	-	-	39	103	144	138	-6	-	-	-	-
- Work Release	-	-	-	2							
Silverwater	48	323	-	-	421	450	29	-	-	-	-
- Work Release	-	50	-	-							
M Parklea (Minimum)	2	64	-	-	75	88	13	-	-	-	-
I - Work Release	-	9	-	-							
N Parramatta	173	153	-	-	326	310	-16	-	-	-	-
I Goulburn (Minimum)	5	96	-	-	101	103	2	-	-	-	-
M Bathurst (Minimum)	12	93	-	-	105	125	20	-	-	-	-
U - Work Release	-	-	-	-							
M Grafton (Minimum)	8	96	4	12	120	129	9	-	-	-	-
Industrial Training Centre	22	219	-	-	319	345	26	-	-	-	-
- Area C (Non-work Release)	3	40	-	-							
- Area C (Work Release)	-	35	-	-							
St Heliers	9	221	-	-	231	256	25	-	-	-	-
- St Heliers Mobile Camp	-	1	-	-							
Glen Innes	3	114	-	-	117	130	13	-	-	-	-
Mannus	7	149	-	-	156	164	8	-	-	-	-
Oberon	5	82	-	-	87	100	13	-	-	-	-
Kirkconnell	13	189	-	-	202	210	8	-	-	-	-
Junee (Minimum)	7	89	-	-	96	100	4	-	-	76	-
John Morony	23	204	-	-	257	289	32	-	-	-	-
- Honour Unit (Non work release)	-	20	-	-							
- Honour Unit (Work release)	-	10	-	-							
Cessnock (Minimum)	41	305	-	-	346	337	-9	-	-	-	-
Ivanhoe (Warakirri) Work Centre	1	15	-	-	16	20	4	-	-	-	-
Sub-total	388	2637	43	117	3185	3359	174	0	0	76	0
TOTAL FULL-TIME	1975	4868	203	251	7297	7714	417	98	3	1224	30

* Accommodation is the operational capacity, provided by the Classification and Placement Unit - amended 23rd Nov for Industrial Training Centre (17 wing closed) **Difference between the operational capacity and the number of inmates.

S=Sentenced inmates (not including appellants) U/S=Unsentenced inmates (including appellants, trials, remandees and deportees)

WEEKLY STATES FOR THE WEEK ENDING: **6th FEBRUARY, 2000.**

PERIODIC DETAINEES (P.D.'S)	People with warrants			Attending			No.*		Beds*	
	Stage1	Stage2	Total	Stage1	Stage2	Total	Beds	+/-		
Administration**	29	0	29	0	0	0	0	0	0	0
Bathurst	28	13	41	18	13	31	20	2		
Grafton	42	19	61	28	18	46	50	22		
Mannus	24	11	35	14	11	25	24	10		
Metropolitan	370	89	459	192	80	272	190	-2		
Metropolitan Mid-week	107	47	154	63	44	107	190	127		
Tamworth	21	2	23	15	2	17	15	0		
Tomago	88	37	125	53	34	87	96	43		
Windsor	78	23	101	50	23	73	60	10		
Wollongong	96	38	134	62	34	96	82	20		
Total Males	883	279	1162	495	259	754	727	232		

Administration**	10	0	10	0	0	0	0	0	0	
Bathurst	6	2	8	6	2	8	10	4		
Norma Parker	31	15	46	16	12	28	30	14		
Norma Parker Mid-week	21	6	27	8	6	14	30	22		
Mannus	6	0	6	5	0	5	6	1		
Tomago	6	2	8	3	2	5	20	17		
Wollongong	4	4	8	0	4	4	10	10		
Total Females	84	29	113	38	26	64	106	68		

TOTAL P.D.'S	967	308	1275	533	285	818	833	300		
---------------------	------------	------------	-------------	------------	------------	------------	------------	------------	--	--

* Number of free beds calculated on the numbers attending in Stage 1 and assuming uncrowded conditions.

Amended 9th January, 2000.

** Administration includes long term absentees and long term sick.

Number of fine defaulters attending periodic detention = 0.

The total number of people with warrants comprises:

Number attending		754 M+	64 F =	818
Number in full-time custody	sentenced-one month or less	1 M+	0 F =	1
	sentenced-more than one month	4 M+	0 F =	4
	remand	3 M+	3 F =	6
Number on appeal with bail		0 M+	0 F =	0
Number absent - leave applied for	- sick	51 M+	14 F =	65
	- other	45 M+	3 F =	48
Total absent - reasons known		104 M+	20 F =	124
Number absent without leave	- no reason given	163 M+	18 F =	181
	- legal action pending	141 M+	10 F =	151
	- appealing Sec 25 cancellation	0 M+	1 F =	1
Total absent without leave		304 M+	29 F =	333
Total number of people with warrants		1162 M+	113 F =	1275

WEEKLY STATES FOR THE WEEK ENDING:

5TH MARCH, 2000

TOTAL NUMBER OF FULL-TIME INMATES IN CORRECTIVE SERVICES CUSTODY = 7312
(Includes full-time inmates in correctional centres, transitional centres and police cells).

FULL-TIME INMATES IN CORRECTIONAL CENTRES AND PERIODIC DETAINEES

	Full-time Inmates		All Inmates Full-time + PD	
	No.	Date	No.	Date
State for this week	7278	05/03/2000	#8532	05/03/2000
State for previous week	7289	27/02/2000	8526	27/02/2000
Highest weekly state, year ending previous week	7334	05/09/1999	8606	12/09/2000
Lowest weekly state, year ending previous week	6807	28/02/1999	8203	28/02/1999

Full-time Custody

- Preliminary figure

Total full-time inmates 6683 (at DOCS institutions) + 595 (at June) = 7278

Included in the above total:

Total number of inmates	6809 M+	469 F=	7278 (including 595 at June)
Number of sentenced inmates (excluding appellants)	4882 M+	282 F=	5164 (including 508 at June)
Number of fine defaulters (in gaol for no other reason)	1 M+	0 F=	1 (including 0 at June)
Number of inmates on appeal	565 M+	58 F=	623 (including 62 at June)
Number of inmates on remand or for trial	1362 M+	129 F=	1491 (including 25 at June)
Number of inmates as deportees (included in remands)	46 M+	0 F=	46 (including 0 at June)
Number of juveniles under 18 years	0 M+	1 F=	1 (including 0 at June)

Periodic Detention

Number of people with warrants	1144 M+	110 F=	#1254	# - Preliminary figure
Number of people attending periodic detention	804 M+	72 F=	876	

Persons subject to a HOME DETENTION ORDER as at 1st February, 2000 =137M + 22F = 159

Inmates held overnight in NSW Police Cells not already counted as a temporary absentee from a correctional centre *							
	Unsentenced		Sentenced		TOTAL		
	M	F	M	F	M	F	
Sydney Police Centre =	13	0	1	0	14	0	
Dubbo Police Centre =	0	0	0	0	0	0	
Moree Police Centre =	0	0	0	0	0	0	
Port Macquarie Police Centre =	1	0	0	0	1	0	
Newcastle Police Centre =	0	0	0	0	0	0	
Lismore Police Centre =	2	0	0	0	2	0	
Queanbeyan Police Centre =	0	0	0	0	0	0	

* Inmates are not included in the full-time custody total.

Parramatta Transitional Centre*		
Total Number of sentenced inmates	=	19 (including 0 on appeal)

* Inmates at the Transitional Centre are not included in the total number for full-time inmates in correctional centres

NUMBER OF PEOPLE WITH COMMUNITY BASED ORDERS AS AT 1st NOVEMBER, 1999.*

Supervision	8761 M+	1848 F=	10609
Reparation (eg Community Service Order)	4573 M+	859 F=	5432
Fine Substitution	284 M+	53 F=	337
Post Prison Orders (eg Parole)	2669 M+	256 F=	2925
Other Orders (eg Bail Supervision, Home Detention)	360 M+	89 F=	449
Total Offenders **	14907 M+	2768 F=	17675

* More recent data not available at this time.

** Some offenders are subject to orders in more than one category.

WEEKLY STATES AT MIDNIGHT ON: 5TH MARCH, 2000

FULL-TIME
INMATES

	INMATES				Total	Accomm: Oper. Capcty*	Accom: +/-**	Segregation		Protection	
	Males		Females					M	F	M	F
	U/S	S	U/S	S							
Goulburn (Maximum)	67	303	-	-	370	408	38	47	-	162	-
Long Bay Complex:											
- Special Purpose Centre	18	21	-	-	39	41	2	-	-	-	-
- L. Bay D.D. Unit	6	9	-	-	15	18	3	-	-	-	-
Long Bay Hospital:						120	14				
M - L. Bay Hospital - Med.	5	14	1	-	20						
A - L. Bay Hospital - Psych.	24	61	-	-	85						
X - Hospital Annexes	-	1	-	-	1						
I - Metro Medical Transient Centre	118	191	-	-	309	332	23	8	-	136	-
M - Malabar Special Programs:											
U - Special Care Unit	-	-	-	-	0	27	27	-	-	-	-
M - Kevin Waller Unit	-	12	-	-	12	15	3	-	-	-	-
- Lifestyles Unit	-	3	-	-	3	8	5	-	-	-	-
- Alexander Maconochie	-	-	-	-	0	10	10	-	-	-	-
- Area 3	12	158	-	-	170	180	10	-	-	-	-
- Area 4	50	77	-	-	127	130	3	-	-	78	-
- Assessment Unit	11	47	-	-	58	60	2	-	-	-	-
- Acute Crisis Management Unit	2	2	-	-	4	10	6	-	-	-	-
Lithgow	50	257	-	-	307	335	28	8	-	62	-
Metro Remand & Reception	737	153	-	-	890	917	27	9	-	172	-
Cessnock (Maximum)	64	39	-	-	103	127	24	2	-	33	-
Sub-total	1164	1348	1	0	2513	2738	225	74	0	643	0
Bathurst (Medium)	77	186	-	2	265	273	8	3	-	32	-
M Broken Hill	12	36	-	3	51	50	-1	-	-	-	-
E Grafton (Medium)	59	85	-	-	144	148	4	1	-	18	-
D Mulawa	-	-	143	151	294	270	-24	-	2	-	28
I Parklea (Medium)	124	138	-	-	262	312	50	-	-	19	-
U Junee (Medium)	81	418	-	1	500	500	0	-	-	450	-
M Tamworth	32	29	-	-	61	64	3	-	-	1	-
Sub-total	385	892	143	157	1577	1617	40	4	2	520	28
Berrima	5	62	-	-	67	65	-2	-	-	-	-
Emu Plains	-	-	38	110	151	166	15	-	-	-	-
- Work Release	-	-	-	3							
Silverwater	34	319	-	-	405	450	45	-	-	-	-
- Work Release	-	52	-	-							
M Parklea (Minimum)	2	63	-	-	76	88	12	-	-	-	-
I - Work Release	-	11	-	-							
N Parramatta	178	141	-	-	319	324	5	-	-	-	-
I Goulburn (Minimum)	5	88	-	-	93	103	10	-	-	-	-
M Bathurst (Minimum)	9	113	-	-	122	125	3	-	-	-	-
U - Work Release	-	-	-	-							
M Grafton (Minimum)	12	94	5	12	123	129	6	-	-	-	-
Industrial Training Centre	20	228	-	-	333	345	12	-	-	-	-
- Area C (Non-work Release)	5	44	-	-							
- Area C (Work Release)	-	36	-	-							
St Heliers	13	219	-	-	237	256	19	-	-	-	-
- St Heliers Mobile Camp	-	5	-	-							
Glen Innes	2	104	-	-	106	130	24	-	-	-	-
Mannus	5	149	-	-	154	164	10	-	-	-	-
Oberon	3	89	-	-	92	100	8	-	-	-	-
Kirkconnell	16	175	-	-	191	210	19	-	-	-	-
Junee (Minimum)	6	89	-	-	95	100	5	-	-	69	-
John Morony	23	209	-	-	264	289	25	-	-	-	-
- Honour Unit (Non work release)	-	18	-	-							
- Honour Unit (Work release)	-	14	-	-							
Cessnock (Minimum)	39	301	-	-	340	337	-3	-	-	-	-
Ivanhoe (Warakirri) Work Centre	1	19	-	-	20	20	0	-	-	-	-
Sub-total	378	2642	43	125	3188	3401	213	0	0	69	0
TOTAL FULL-TIME	1927	4882	187	282	7278	7756	478	78	2	1232	28

* Accommodation is the operational capacity, provided by the Classification and Placement Unit - amended 7th March 2000 for Emu Plains and Parramatta Correctional Centres.

** Difference between the operational capacity and the number of inmates.

S=Sentenced inmates (not including appellants) U/S=Unsentenced inmates (including appellants, trials, remandees and deportees)

WEEKLY STATES FOR THE WEEK ENDING: 5TH MARCH, 2000

PERIODIC DETAINEES (P.D.'S)	People with warrants			Attending			No.* Beds	Beds* +/-
	Stage1	Stage2	Total	Stage1	Stage2	Total		
Administration**	26	0	26	0	0	0	0	0
Bathurst #	23	14	37	17	14	31	20	3
Broken Hill +	1	0	1	1	0	1	1	1
Grafton	37	19	56	27	18	45	50	23
Mannus	26	13	39	26	0	26	24	-2
Metropolitan	356	87	443	211	81	292	190	-21
Metropolitan Mid-week	108	44	152	63	44	107	190	127
Tamworth	21	2	23	15	2	17	15	0
Tomago	89	41	130	65	38	103	96	31
Windsor	74	25	99	54	25	79	60	6
Wollongong	102	36	138	69	34	103	82	13
Total Males	863	281	1144	548	256	804	-728	181

Administration**	9	0	9	0	0	0	0	0
Bathurst	5	2	7	4	2	6	10	6
Norma Parker	26	15	41	19	13	32	30	11
Norma Parker Mid-week	26	6	32	16	5	21	30	14
Mannus	5	1	6	3	0	3	6	3
Tomago	4	2	6	2	2	4	20	18
Wollongong	6	3	9	3	3	6	10	7
Total Females	81	29	110	47	25	72	106	59

TOTAL P.D.'S	944	310	1254	595	281	876	834	240
---------------------	------------	------------	-------------	------------	------------	------------	------------	------------

* Number of free beds calculated on the numbers attending in Stage 1 and assuming uncrowded conditions.
'Amended 3rd March, 2000.

** Administration includes long term absentees and long term sick. # - Preliminary figure
Number of fine defaulters attending periodic detention = 0. + - First detainees received 3/3/00

The total number of people with warrants comprises: (Note: Preliminary figures)

Number attending		804 M+	72 F =	876
Number in full-time custody	sentenced-one month or less	0 M+	0 F =	0
	sentenced-more than one month	4 M+	1 F =	5
	remand	4 M+	0 F =	4
Number on appeal with bail		0 M+	0 F =	0
Number absent - leave applied for	- sick	39 M+	10 F =	49
	- other	41 M+	2 F =	43
Total absent - reasons known		88 M+	13 F =	101
Number absent without leave	- no reason given	156 M+	19 F =	175
	- legal action pending	96 M+	6 F =	102
	- appealing Sec 25 cancellation	0 M+	0 F =	0
Total absent without leave		252 M+	25 F =	277
Total number of people with warrants		1144 M+	110 F =	1254

WEEKLY STATES FOR THE WEEK ENDING:

2ND APRIL, 2000

TOTAL NUMBER OF FULL-TIME INMATES IN CORRECTIVE SERVICES CUSTODY = 7421
 (Includes full-time inmates in correctional centres, transitional centres and police cells).

FULL-TIME INMATES IN CORRECTIONAL CENTRES AND PERIODIC DETAINEES

	Full-time Inmates		All Inmates Full-time + PD	
	No.	Date	No.	Date
State for this week	7372	02/04/2000	8614	02/04/2000
State for previous week	7317	26/03/2000	8561	26/03/2000
Highest weekly state, year ending previous week	7334	05/09/1999	8608	12/09/1999
Lowest weekly state, year ending previous week	6924	21/03/1999	8290	21/03/1999

Full-time Custody

Total full-time inmates 6776 (at DOCS institutions) + 596 (at Junee) = 7372

Included in the above total:

Total number of inmates	6914 M+	458 F=	7372 (including 596 at Junee)
Number of sentenced inmates (excluding appellants)	5006 M+	286 F=	5292 (including 521 at Junee)
Number of fine defaulters (in gaol for no other reason)	0 M+	0 F=	0 (including 0 at Junee)
Number of inmates on appeal	554 M+	54 F=	608 (including 60 at Junee)
Number of inmates on remand or for trial	1354 M+	118 F=	1472 (including 15 at Junee)
Number of inmates as deportees (included in remands)	44 M+	0 F=	44 (including 0 at Junee)
Number of juveniles under 18 years	1 M+	1 F=	2 (including 0 at Junee)

Periodic Detention

Number of people with warrants	1134 M+	108 F=	1242
Number of people attending periodic detention	744 M+	69 F=	813

Persons subject to a HOME DETENTION ORDER as at 1st March, 2000 = 134M + 25F = 159.

Inmates held overnight in NSW Police Cells not already counted as a temporary absentee from a correctional centre *							
		Unsentenced		Sentenced		TOTAL	
		M	F	M	F	M	F
Sydney Police Centre	=	13	0	7	0	20	0
Dubbo Police Centre	=	0	0	0	0	0	0
Moree Police Centre	=	2	0	0	0	2	0
Port Macquarie Police Centre	=	0	0	0	0	0	0
Newcastle Police Centre	=	7	0	0	0	7	0
Lismore Police Centre	=	0	0	0	0	0	0
Queanbeyan Police Centre	=	0	0	0	0	0	0

* Inmates are not included in the full-time custody total.

Parramatta Transitional Centre*		
Total Number of sentenced inmates	=	20 (including 0 on appeal)

* Inmates at the Transitional Centre are not included in the total number for full-time inmates in correctional centres

NUMBER OF PEOPLE WITH COMMUNITY BASED ORDERS AS AT 1ST NOVEMBER, 1999.*

Supervision	8761 M+	1848 F=	10609
Reparation (eg Community Service Order)	4573 M+	859 F=	5432
Fine Substitution	284 M+	53 F=	337
Post Prison Orders (eg Parole)	2669 M+	256 F=	2925
Other Orders (eg Bail Supervision, Home Detention)	360 M+	89 F=	449
Total Offenders **	14907 M+	2768 F=	17675

* More recent data not available at this time.

** Some offenders are subject to orders in more than one category.

WEEKLY STATES AT MIDNIGHT ON: 2nd April, 2000.

FULL-TIME INMATES

	INMATES					Accomm: Oper. Capcty*	Accom +/-**	Segregation		Protection	
	Males		Females		Total			M	F	M	F
	U/S	S	U/S	S							
Goulburn (Maximum)	83	287	-	-	370	408	38	50	-	175	-
Long Bay Complex:											
- Special Purpose Centre	18	21	-	-	39	41	2	-	-	-	-
- L. Bay D.D. Unit	6	11	-	-	17	18	1	-	-	-	-
Long Bay Hospital:						120	2				
M - L. Bay Hospital - Med.	9	18	-	1	28						
A - L. Bay Hospital - Psych.	23	66	-	-	89						
X - Hospital Annexes	-	1	-	-	1						
I - Metro Medical Transient Centre	114	195	-	-	309	332	23	10	-	135	-
M - Malabar Special Programs:											
U - Special Care Unit	-	-	-	-	0	27	27	-	-	-	-
M - Kevin Waller Unit	1	10	-	-	11	15	4	-	-	-	-
- Lifestyles Unit	-	7	-	-	7	8	1	-	-	-	-
- Alexander Maconochie	-	-	-	-	0	10	10	-	-	-	-
- Area 3	11	153	-	-	164	180	16	-	-	-	-
- Area 4	46	66	-	-	112	130	18	-	-	77	-
- Assessment Unit	13	45	-	-	58	60	2	-	-	-	-
- Acute Crisis Management Unit	3	4	-	-	7	10	3	-	-	-	-
Lithgow	52	267	-	-	319	335	16	13	-	67	-
Metro Remand & Reception	726	168	-	-	894	917	23	15	-	156	-
Cessnock (Maximum)	50	65	-	-	115	127	12	3	-	39	-
Sub-total	1155	1384	0	1	2540	2738	198	91	0	649	0
M Bathurst (Medium)	77	184	2	1	264	273	9	6	-	34	-
E Broken Hill	10	38	-	3	51	50	-1	-	-	1	-
D Grafton (Medium)	58	90	-	1	149	148	-1	2	-	16	-
I Mulawa	-	-	129	149	278	270	-8	-	5	-	22
U Parklea (Medium)	132	150	-	-	282	312	30	-	-	23	-
M Junee (Medium)	68	426	2	-	496	500	4	1	-	467	-
M Tamworth	32	26	-	-	58	64	6	-	-	7	-
Sub-total	377	914	133	154	1578	1617	39	9	5	548	22
M Berrima	4	65	-	-	69	65	-4	-	-	-	-
Emu Plains	-	-	34	116	153	166	13	-	-	-	-
- Work Release	-	-	-	3							
Silverwater	42	305	-	-	397	450	53	-	-	-	-
- Work Release	-	50	-	-							
M Parklea (Minimum)	2	54	-	-	69	88	19	-	-	-	-
I - Work Release	-	13	-	-							
N Parramatta	175	150	-	-	325	328	3	-	-	-	-
I Goulburn (Minimum)	4	104	-	-	108	103	-5	-	-	-	-
M Bathurst (Minimum)	9	109	-	-	118	125	7	-	-	-	-
U - Work Release	-	-	-	-							
M Grafton (Minimum)	10	99	5	12	126	129	3	-	-	-	-
Industrial Training Centre	29	221	-	-	337	345	8	-	-	-	-
- Area C (Non-work Release)	7	46	-	-							
- Area C (Work Release)	-	34	-	-							
St Heliers	7	238	-	-	245	256	11	-	-	-	-
- St Heliers Mobile Camp	-	-	-	-							
Glen Innes	2	123	-	-	125	130	5	-	-	-	-
Mannus	3	152	-	-	155	164	9	-	-	-	-
Oberon	3	94	-	-	97	100	3	-	-	-	-
Kirkconnell	11	191	-	-	202	210	8	-	-	-	-
Junee (Minimum)	5	95	-	-	100	100	0	-	-	70	-
John Morony	21	210	-	-	270	289	19	-	-	-	-
- Honour Unit (Non work release)	-	23	-	-							
- Honour Unit (Work release)	-	16	-	-							
Cessnock (Minimum)	42	298	-	-	340	337	-3	-	-	-	-
Ivanhoe (Warakirri) Work Centre	-	18	-	-	18	20	2	-	-	-	-
Sub-total	376	2708	39	131	3254	3405	151	0	0	70	0
TOTAL FULL-TIME	1908	5006	172	286	7372	7760	388	100	5	1267	22

* Accommodation is the operational capacity, provided by the Classification and Placement Unit - amended 7th March 2000 for Emu Plains.

** Difference between the operational capacity and the number of inmates.

S=Sentenced inmates (not including appellants) U/S=Unsentenced inmates (including appellants, trials, remandees and deportees)

WEEKLY STATES FOR THE WEEK ENDING: 2nd April, 2000.

PERIODIC DETAINEE (P.D.'S)	People with warrants			Attending			No.* Beds	Beds* +/-
	Stage1	Stage2	Total	Stage1	Stage2	Total		
Administration**	24	0	24	0	0	0	0	0
Bathurst	21	18	39	11	17	28	30	19
Broken Hill	2	0	2	0	0	0	18	
Grafton	38	20	58	27	19	46	32	5
Mannus	27	12	39	9	11	20	24	15
Metropolitan	316	84	400	176	78	254	225	49
Metropolitan Mid-week	144	46	190	76	45	121	225	149
Tamworth	21	2	23	15	1	16	18	3
Tomago	94	50	144	59	47	106	100	41
Windsor	69	22	91	45	17	62	80	35
Wollongong	86	38	124	60	31	91	72	12
Total Males	842	292	1134	478	266	744	824	328

Administration**	5	0	5	0	0	0	0	0
Bathurst	3	3	6	1	3	4	10	9
Broken Hill	0	0	0	0	0	0	2	2
Norma Parker	31	12	43	20	11	31	60	40
Norma Parker Mid-week	27	6	33	14	5	19	60	46
Mannus	5	2	7	2	1	3	6	4
Tomago	5	2	7	4	2	6	20	16
Wollongong	5	2	7	4	2	6	10	6
Total Females	81	27	108	45	24	69	168	123

TOTAL P.D.'S	923	319	1242	523	290	813	992	451
---------------------	------------	------------	-------------	------------	------------	------------	------------	------------

* Number of free beds calculated on the numbers attending in Stage 1 and assuming uncrowded conditions.
Amended 3rd April, 2000.

** Administration includes long term absentees and long term sick.

Preliminary figures

Number of fine defaulters attending periodic detention = 0 .

The total number of people with warrants comprises:

Number attending		744 M+	69 F =	813
Number in full-time custody	sentenced-one month or less	1 M+	0 F =	1
	sentenced-more than one month	8 M+	0 F =	8
	remand	15 M+	0 F =	15
Number on appeal with bail		0 M+	0 F =	0
Number absent - leave applied for	- sick	45 M+	6 F =	51
	- other	48 M+	8 F =	56
Total absent - reasons known		117 M+	14 F =	131
Number absent without leave	- no reason given#	183 M+	14 F =	197
	- legal action pending#	90 M+	11 F =	101
	- appealing Sec 25 cancellation	0 M+	0 F =	0
Total absent without leave		273 M+	25 F =	298

WEEKLY STATES FOR THE WEEK ENDING:

7TH MAY, 2000

TOTAL NUMBER OF FULL-TIME INMATES IN CORRECTIVE SERVICES CUSTODY = 7380
 (includes full-time inmates in correctional centres, transitional centres and police cells).

FULL-TIME INMATES IN CORRECTIONAL CENTRES AND PERIODIC DETAINEES

	Full-time Inmates		All Inmates Full-time + PD	
	No.	Date	No.	Date
State for this week	7348	07/05/2000	8622	07/05/2000
State for previous week	7357	30/04/2000	8625	30/04/2000
Highest weekly state, year ending previous week	7416	09/04/2000	8663	09/04/2000
Lowest weekly state, year ending previous week	7097	02/05/1999	8359	09/05/1999

Full-time Custody

Total full-time inmates 6750 (at DOCS institutions) + 598 (at Junee) = 7348

Included in the above total:

Total number of inmates	6887 M+	461 F=	7348 (including 598 at Junee)
Number of sentenced inmates (excluding appellants)	4954 M+	293 F=	5247 (including 503 at Junee)
Number of fine defaulters (in gaol for no other reason)	2 M+	0 F=	2 (including 1 at Junee)
Number of inmates on appeal	529 M+	52 F=	581 (including 65 at Junee)
Number of inmates on remand or for trial	1404 M+	116 F=	1520 (including 30 at Junee)
Number of inmates as deportees (included in remands)	36 M+	0 F=	36 (including 0 at Junee)
Number of juveniles under 18 years	0 M+	1 F=	1 (including 0 at Junee)

Periodic Detention

Number of people with warrants	1163 M+	111 F=	1274
Number of people attending periodic detention	812 M+	78 F=	890

Persons subject to a HOME DETENTION ORDER as at 1st May, 2000 = 147M + 23F = 170

Inmates held overnight in NSW Police Cells not already counted as a temporary absentee from a correctional centre *							
		Unsentenced		Sentenced		TOTAL	
		M	F	M	F	M	F
Sydney Police Centre	=	9	0	0	0	9	0
Parramatta Police Centre	=	0	0	0	0	0	0
Dubbo Police Centre	=	0	2	0	0	0	2
Moree Police Centre	=	0	0	0	0	0	0
Port Macquarie Police Centre	=	2	0	0	0	2	0
Newcastle Police Centre	=	0	0	0	0	0	0
Lismore Police Centre	=	0	0	0	0	0	0
Queanbeyan Police Centre	=	1	0	0	0	1	0

* Inmates are not included in the full-time custody total.

Parramatta Transitional Centre*

Total number of sentenced inmates = 18 (including 0 on appeal and 4 deportees)

* Inmates at the Transitional Centre are not included in the total number for full-time inmates in correctional centres

NUMBER OF PEOPLE WITH COMMUNITY BASED ORDERS AS AT 1ST NOVEMBER, 1999.*

Supervision	8761 M+	1848 F=	10609
Reparation (eg Community Service Order)	4573 M+	859 F=	5432
Fine Substitution	284 M+	53 F=	337
Post Prison Orders (eg Parole)	2669 M+	256 F=	2925
Other Orders (eg Bail Supervision, Home Detention)	360 M+	89 F=	449
Total Offenders **	14907 M+	2768 F=	17675

* More recent data not available at this time.

** Some offenders are subject to orders in more than one category.

WEEKLY STATES AT MIDNIGHT ON: 7TH MAY, 2000.

FULL-TIME INMATES

	INMATES					Accom:	Accom	Segregatio		Protection	
	Males		Females		Total	Oper.	+/-**	M	F	M	F
	U/S	S	U/S	S		Capacity*					
Goulburn (Maximum)	89	280	-	-	369	358	-11	13	-	181	-
Long Bay Complex:											
- Special Purpose Centre	14	24	-	-	38	41	3	-	-	-	-
- L. Bay D.D. Unit	7	11	-	-	18	18	0	-	-	-	-
Long Bay Hospital:						120	1				
M - L. Bay Hospital - Med.	6	23	-	-	29			-	-	-	-
A - L. Bay Hospital - Psych.	20	69	-	-	89			-	-	-	-
X - Hospital Annexes	-	1	-	-	1			-	-	-	-
I - Metro Medical Transient Centre	121	191	-	-	312	332	20	9	-	142	-
M - Malabar Special Programs:											
U - Special Care Unit	-	-	-	-	0	27	27	-	-	-	-
M - Kevin Waller Unit	-	9	-	-	9	15	6	-	-	-	-
- Lifestyles Unit	-	7	-	-	7	8	1	-	-	-	-
- Alexander Maconochie	-	-	-	-	0	10	10	-	-	-	-
- Area 3	15	158	-	-	173	180	7	-	-	-	-
- Area 4	37	57	-	-	94	130	36	-	-	78	-
- Assessment Unit	11	47	-	-	58	60	2	-	-	-	-
- Acute Crisis Management Unit	3	5	-	-	8	10	2	-	-	-	-
Lithgow	51	275	-	-	326	335	9	7	-	73	-
Metro Remand & Reception	746	153	-	-	899	917	18	11	-	151	-
Cessnock (Maximum)	46	60	-	-	106	127	21	3	-	31	-
Sub-total	1166	1370	0	0	2536	2688	152	43	0	656	0
Bathurst (Medium)	70	193	1	-	264	273	9	5	-	30	-
M Broken Hill	13	37	-	6	56	50	-6	-	-	-	-
E Grafton (Medium)	52	102	1	-	155	148	-7	1	-	19	-
D Mulawa	-	-	129	144	273	270	-3	-	2	-	19
I Parklea (Medium)	104	102	-	-	206	312	106	1	-	20	-
U Junee (Medium)	88	409	1	-	498	500	2	5	-	463	-
M Tamworth	34	24	-	-	58	64	6	1	-	-	-
Sub-total	361	867	132	150	1510	1617	107	13	2	532	19
Berrima	4	66	-	-	70	65	-5	-	-	-	-
Emu Plains	-	-	32	125	161	164	3	-	-	-	-
- Work Release	-	-	-	4							
Silverwater	38	337	-	-	441	450	9	-	-	-	-
- Work Release	-	66	-	-							
M Parklea (Minimum)	3	68	-	-	81	88	7	-	-	-	-
I - Work Release	-	10	-	-							
N Parramatta	186	122	-	-	308	328	20	-	-	-	-
I Goulburn (Minimum)	4	106	-	-	110	103	-7	-	-	-	-
M Bathurst (Minimum)	7	113	-	-	120	125	5	-	-	-	-
U - Work Release	-	-	-	-							
M Grafton (Minimum)	10	97	4	14	125	129	4	-	-	-	-
Industrial Training Centre	28	220	-	-	331	345	14	-	-	-	-
- Area C (Non-work Release)	5	52	-	-							
- Area C (Work Release)	-	26	-	-							
St Heliers	15	223	-	-	238	256	18	-	-	-	-
- St Heliers Mobile Camp	-	-	-	-							
Glen Innes	2	121	-	-	123	130	7	-	-	-	-
Mannus	4	144	-	-	148	164	16	-	-	-	-
Oberon	8	88	-	-	96	100	4	-	-	-	-
Kirkconnell	14	189	-	-	203	210	7	-	-	-	-
Junee (Minimum)	6	94	-	-	100	100	0	-	-	71	-
John Morony	30	218	-	-	282	300	18	-	-	-	-
- Honour Unit (Non work release)	-	21	-	-							
- Honour Unit (Work release)	-	13	-	-							
Cessnock (Minimum)	42	303	-	-	345	337	-8	-	-	-	-
Ivanhoe (Warakirri) Work Centre	-	20	-	-	20	20	0	-	-	-	-
Sub-total	406	2717	36	143	3302	3414	112	0	0	71	0
TOTAL FULL-TIME	1933	4954	168	293	7348	7719	371	56	2	1259	19

* Accommodation is the operational capacity, provided by the Classification and Placement Unit - amended 6th May 2000 for John Morony.

** Difference between the operational capacity and the number of inmates.

S=Sentenced inmates (not including appellants) U/S=Unsentenced inmates (including appellants, trials, remandees and deportees)

WEEKLY STATES FOR THE WEEK ENDING: 7TH MAY, 2000.

PERIODIC DETAINEEES (P.D.'S)	People with warrants			Attending			No.* Beds	Beds* +/-
	Stage1	Stage2	Total	Stage1	Stage2	Total		
Administration**	23	0	23	0	0	0	0	0
Bathurst	23	17	40	13	17	30	30	17
Broken Hill #	2	0	2	2	0	2	18	16
Grafton	35	24	59	26	24	50	32	6
Mannus	27	10	37	17	10	27	24	7
Metropolitan	330	83	413	195	79	274	225	30
Metropolitan Mid-week	159	46	205	96	46	142	225	129
Tamworth	18	2	20	15	2	17	18	3
Tomago	108	44	152	72	35	107	100	28
Windsor	63	19	82	44	19	63	80	36
Wollongong	98	32	130	71	29	100	72	1
Total Males	886	277	1163	551	261	812	824	273
Administration**	4	0	4	0	0	0	0	0
Bathurst	3	3	6	3	3	6	10	7
Broken Hill	0	0	0	0	0	0	2	2
Norma Parker	35	10	45	23	9	32	60	37
Norma Parker Mid-week	30	7	37	19	7	26	60	41
Mannus	4	2	6	1	1	2	6	5
Tomago	4	2	6	4	2	6	20	16
Wollongong	4	3	7	3	3	6	10	7
Total Females	84	27	111	53	25	78	168	115
TOTAL P.D.'S	970	304	1274	604	286	890	992	388

* Number of free beds calculated on the numbers attending in Stage 1 and assuming uncrowded conditions.

Amended as per Periodic Detention Administration's returns on 3rd April, 2000.

** Administration includes long term absentees and long term sick.

Preliminary figure

Number of fine defaulters attending periodic detention = 0.

The total number of people with warrants comprises:

Number attending		812 M+	78 F =	890
Number in full-time custody	sentenced-one month or less	2 M+	0 F =	2
	sentenced-more than one month	4 M+	0 F =	4
	remand	18 M+	0 F =	18
Number on appeal with bail		0 M+	0 F =	0
Number absent - leave applied for	- sick	41 M+	10 F =	51
	- other	37 M+	4 F =	41
Total absent - reasons known		102 M+	14 F =	116
Number absent without leave	- no reason given	231 M+	12 F =	243
	- legal action pending	18 M+	7 F =	25
	- appealing Sec 25 cancellation	0 M+	0 F =	0
Total absent without leave		249 M+	19 F =	268
Total number of people with warrants		1163 M+	111 F =	1274

WEEKLY STATES FOR THE WEEK ENDING:

4TH JUNE, 2000.

TOTAL NUMBER OF FULL-TIME INMATES IN CORRECTIVE SERVICES CUSTODY = 7382
(Includes full-time inmates in correctional centres, transitional centres and police cells).

FULL-TIME INMATES IN CORRECTIONAL CENTRES AND PERIODIC DETAINEES

	Full-time Inmates		All Inmates Full-time + PD	
	No.	Date	No.	Date
State for this week	7352	04/06/2000	8633	04/06/2000
State for previous week	7296	28/05/2000	8573	28/05/2000
Highest weekly state, year ending previous week	7416	09/04/2000	8663	09/04/2000
Lowest weekly state, year ending previous week	7107	26/12/1999	8400	18/07/1999

Full-time Custody

Total full-time inmates 6755 (at DOCS institutions) + 597 (at Junee) = 7352

Included in the above total:

Total number of inmates	6882 M+	470 F=	7352 (including 597 at Junee)
Number of sentenced inmates (excluding appellants)	4951 M+	299 F=	5250 (including 505 at Junee)
Number of fine defaulters (in gaol for no other reason)	2 M+	0 F=	2 (including 0 at Junee)
Number of inmates on appeal	521 M+	45 F=	566 (including 64 at Junee)
Number of inmates on remand or for trial	1410 M+	126 F=	1536 (including 28 at Junee)
Number of inmates as deportees (included in remands)	37 M+	1 F=	38 (including 0 at Junee)
Number of juveniles under 18 years	0 M+	1 F=	1 (including 0 at Junee)

Periodic Detention

Number of people with warrants	1169 M+	112 F=	1281
Number of people attending periodic detention	816 M+	78 F=	894

Persons subject to a HOME DETENTION ORDER as at 1st May, 2000 = 147M + 23F = 170.

Inmates held overnight in NSW Police Cells not already counted as a temporary absentee from a correctional centre *							
		Unsentenced		Sentenced		TOTAL	
		M	F	M	F	M	F
Sydney Police Centre	=	0	0	0	0	0	0
Parramatta Police Centre	=	0	0	0	0	0	0
Campbelltown Police Centre	=	1	0	0	0	1	0
Dubbo Police Centre	=	0	2	0	0	0	2
Moree Police Centre	=	0	0	0	0	0	0
Port Macquarie Police Centre	=	2	0	0	0	2	0
Newcastle Police Centre	=	5	0	2	0	7	0
Lismore Police Centre	=	1	0	0	0	1	0
Queanbeyan Police Centre	=	2	0	1	0	3	0

* Inmates are not included in the full-time custody total.

Parramatta Transitional Centre*

Total number of sentenced inmates = 14 (including 0 on appeal)

* Inmates at the Transitional Centre are not included in the total number for full-time inmates in correctional centres

NUMBER OF PEOPLE WITH COMMUNITY BASED ORDERS AS AT 1ST NOVEMBER, 1999.++

Supervision	8761 M+	1848 F=	10609
Reparation (eg Community Service Order)	4573 M+	859 F=	5432
Fine Substitution	284 M+	53 F=	337
Post Prison Orders (eg Parole)	2669 M+	256 F=	2925
Other Orders (eg Bail Supervision, Home Detention)	360 M+	89 F=	449
Total Offenders **	14907 M+	2768 F=	17675

++ More recent data not available at this time.

** Some offenders are subject to orders in more than one category.

WEEKLY STATES AT MIDNIGHT ON: 4TH JUNE, 2000.

FULL-TIME INMATES	INMATES					Accom:	Accom	Segregatio		'Protection	
	Males		Females		Total	Oper.	+/-**	M	F	M	F
	U/S	S	U/S	S		Capacity*					
Goulburn (Maximum)	67	278	-	-	345	358	13	17	-	161	-
Long Bay Complex:											
- Special Purpose Centre	15	25	-	-	40	41	1	-	-	-	-
- L. Bay D.D. Unit	7	11	-	-	18	18	0	-	-	-	-
Long Bay Hospital:						120	-3				
M - L. Bay Hospital - Med.	8	20	-	-	28						
A - L. Bay Hospital - Psych.	21	68	-	-	89						
X - Hospital Annexes	2	4	-	-	6						
I - Metro Medical Transient Centre	112	190	-	-	302	332	30	10	-	124	-
M - Malabar Special Programs:											
U - Special Care Unit	-	-	-	-	0	27	27	-	-	-	-
M - Kevin Waller Unit	1	9	-	-	10	15	5	-	-	-	-
- Lifestyles Unit	-	5	-	-	5	8	3	-	-	-	-
- Alexander Maconochie	-	-	-	-	0	10	10	-	-	-	-
- Area 3	13	149	-	-	162	180	18	-	-	-	-
- Area 4	16	49	-	-	65	80	15	-	-	65	-
- Assessment Unit	11	48	-	-	59	60	1	-	-	-	-
- Acute Crisis Management Unit	2	5	-	-	7	10	3	-	-	-	-
Lithgow	54	272	-	-	326	335	9	4	-	71	-
Metro Remand & Reception	737	155	-	-	892	917	25	16	-	128	-
Cessnock (Maximum)	57	53	-	-	110	127	17	3	-	38	-
Sub-total	1123	1341	0	0	2464	2638	174	50	0	587	0
Bathurst (Medium)	56	191	-	2	249	273	24	3	-	32	-
M Broken Hill	14	30	-	6	50	50	0	3	-	1	-
E Grafton (Medium)	56	93	-	-	149	148	-1	1	-	14	-
D Mulawa	-	-	145	146	291	270	-21	-	1	-	21
I Parklea (Medium)	158	113	-	-	271	312	41	3	-	80	-
U Junee (Medium)	88	410	-	-	498	500	2	2	-	460	-
M Tamworth	28	28	-	-	56	64	8	1	-	-	-
Sub-total	400	865	145	154	1564	1617	53	13	1	587	21
Berrima	3	63	-	-	66	65	-1	-	-	-	-
Emu Plains	-	-	25	125	154	164	10	-	-	-	-
- Work Release	-	-	-	4							
Silverwater	32	347	-	-	439	450	11	-	-	-	-
- Work Release	-	60	-	-							
M Parklea (Minimum)	1	51	-	-	63	88	25	-	-	-	-
I - Work Release	-	11	-	-							
N Parramatta	197	125	-	-	322	328	6	-	-	-	-
I Goulburn (Minimum)	3	111	-	-	114	103	-11	-	-	-	-
M Bathurst (Minimum)	9	106	-	-	115	125	10	-	-	-	-
U - Work Release	-	-	-	-							
M Grafton (Minimum)	9	100	1	16	126	129	3	-	-	-	-
Industrial Training Centre	29	226	-	-	340	345	5	-	-	-	-
- Area C (Non-work Release)	6	54	-	-							
- Area C (Work Release)	-	25	-	-							
St Heliers	18	222	-	-	240	256	16	-	-	-	-
- St Heliers Mobile Camp	-	-	-	-							
Glen Innes	1	116	-	-	117	130	13	-	-	-	-
Mannus	2	158	-	-	160	164	4	-	-	-	-
Oberon	8	91	-	-	99	100	1	-	-	-	-
Kirkconnell	10	199	-	-	209	210	1	-	-	-	-
Junee (Minimum)	4	95	-	-	99	100	1	-	-	82	-
John Morony	33	210	-	-	285	290	5	-	-	-	-
- Honour Unit (Non work release)	-	28	-	-							
- Honour Unit (Work release)	-	14	-	-							
Cessnock (Minimum)	41	300	-	-	341	337	-4	-	-	-	-
Ivanhoe (Warakirri)	2	26	-	-	28	20	-8	-	-	-	-
Brewarrina Yetta Dhinnakkal	-	7	-	-	7	50	43	-	-	-	-
Sub-total	408	2745	26	145	3324	3454	130	0	0	82	0
TOTAL FULL-TIME	1931	4951	171	299	7352	7709	357	63	1	1256	21

* Accommodation is the operational capacity, provided by the Classification and Placement Unit - amended 4th June, 2000 for John Morony C.C.

** Difference between the operational capacity and the number of inmates.

S=Sentenced inmates (not including appellants) U/S=Unsentenced inmates (including appellants, trials, remandees and deportees)

WEEKLY STATES FOR THE WEEK ENDING: 4TH JUNE, 2000.

PERIODIC DETAINEES (P.D.'S)	People with warrants			Attending			No.*	Beds*
	Stage1	Stage2	Total	Stage1	Stage2	Total	Beds	+/-
Administration**	24	0	24	0	0	0	0	0
Bathurst	25	16	41	17	15	32	30	13
Broken Hill	8	0	8	6	0	6	18	12
Grafton	37	24	61	28	24	52	32	4
Mannus	30	10	40	21	10	31	24	3
Metropolitan	321	82	403	171	80	251	225	54
Metropolitan Mid-week	160	47	207	89	47	136	225	136
Tamworth	20	1	21	17	1	18	18	1
Tomago	113	40	153	85	35	120	100	15
Windsor	65	19	84	53	19	72	80	27
Wollongong	92	35	127	66	32	98	72	6
Total Males	895	274	1169	553	263	816	824	271

Administration**	7	0	7	0	0	0	0	0
Bathurst	4	3	7	3	3	6	10	7
Broken Hill	0	0	0	0	0	0	2	2
Norma Parker	32	9	41	24	7	31	60	36
Norma Parker Mid-week	27	6	33	14	5	19	60	46
Mannus	3	2	5	3	2	5	6	3
Tomago	6	4	10	6	3	9	20	14
Wollongong	5	4	9	4	4	8	10	6
Total Females	84	28	112	54	24	78	168	114

TOTAL P.D.'S	979	302	1281	607	287	894	992	385
---------------------	------------	------------	-------------	------------	------------	------------	------------	------------

* Number of free beds calculated on the numbers attending in Stage 1 and assuming uncrowded conditions.

Amended as per Periodic Detention Administration's returns on 3rd April, 2000.

** Administration includes long term absentees and long term sick.

Number of fine defaulters attending periodic detention = 0.

The total number of people with warrants comprises:

Number attending		816 M+	78 F =	894
Number in full-time custody	sentenced-one month or less	3 M+	0 F =	3
	sentenced-more than one month	3 M+	0 F =	3
	remand	16 M+	1 F =	17
Number on appeal with bail		0 M+	0 F =	0
Number absent - leave applied for	- sick	43 M+	9 F =	52
	- other	40 M+	4 F =	44
Total absent - reasons known		105 M+	14 F =	119
Number absent without leave	- no reason given	241 M+	17 F =	258
	- legal action pending	7 M+	3 F =	10
	- appealing Sec 25 cancellation	0 M+	0 F =	0
Total absent without leave		248 M+	20 F =	268
Total number of people with warrants		1169 M+	112 F =	1281