



Statistical Publication

Aboriginal and Torres Strait Islander Inmates: Facts and Figures

Simon Eyland

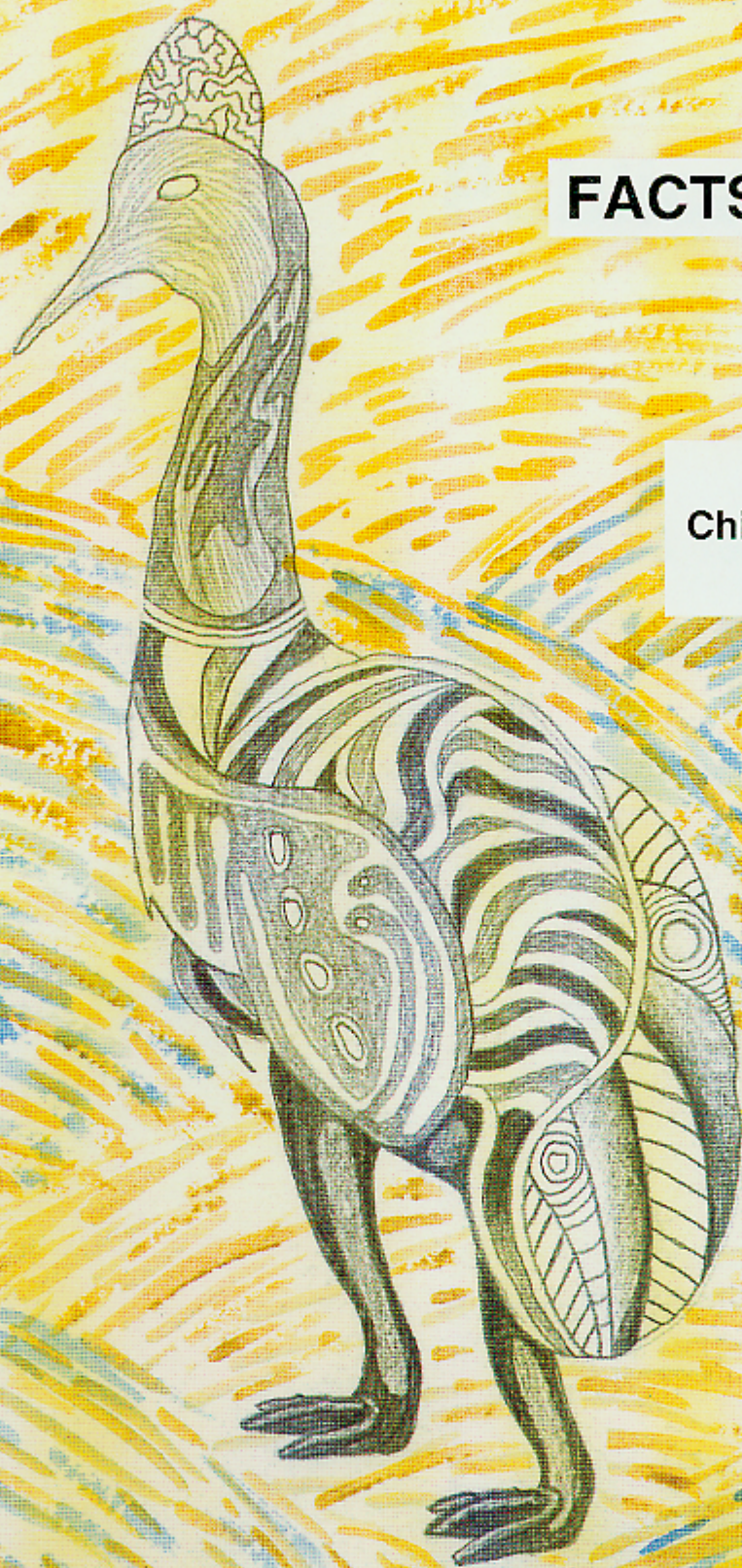
Statistical Publication No.15
November 1996
ISSN 0814 1215

NSW Department of Corrective Services

ABORIGINAL & TORRES STRAIT ISLANDER INMATES

FACTS & FIGURES

Simon Eyland
Chief Research Officer
November 1996



NSW Department of Corrective Services

JILLMABLW
93

Cover Painting "Boondarra" - Cassowary © Jillambu 1993

Statistical Publication No. 15
ISSN 0814 1215

© NSW Department of Corrective Services

Research and Statistics Unit,
NSW Department of Corrective Services,
Level 11, 24 Campbell Street,
SYDNEY NSW 2000

Telephone: (02) 9289 -1554 Facsimile: (02) 9289 - 1590



Statistical Publication

**Aboriginal & Torres Strait Islander
Inmates**

Facts & Figures

**Simon Eyland
Chief Research Officer**

**Statistical Publication No. 15
November 1996
ISSN 0184 1215**

NSW Department of Corrective Services

TABLE OF CONTENTS

	Page
Foreword	i
NSW Inmate Census, 30 June 1996	1
NSW Inmate Census 1982 - 1996	23
Aboriginal & Torres Strait Islander Inmates in full-time custody	27
Monthly Statistics 1993 - 1996	28
Australian Indigenous Inmate Population	35
Recidivism	37
Truth in Sentencing	39
Time Served, NSW Inmates, 1993	48
NSW Correctional Centre Deaths	57

Foreword

Myths have developed and many assumptions have been made in relation to Aboriginal and Torres Strait Islander people held in custody in correctional centres in New South Wales. The aim of this publication is to provide a range of information which can be used in discussing the situation of Aboriginal and Torres Strait Islander people in custody. This information is likely to be of particular use to researchers, managers, and policy makers who need factual data to undertake their responsibilities properly.

While much of this information has been previously made available from a variety of sources, this is the first attempt to pull together in one document a range of relevant information. The data included is taken from a variety of sources including the inmate census, monthly statistical data, research studies on recidivism and research into Truth in Sentencing and its impact on Aboriginal and Torres Strait Islander people.

The term Aboriginal and Torres Strait Islander inmate is used to refer to inmates who have identified themselves to be Australian Aboriginal or Torres Strait Islander people on first reception into custody. In addition, one section of the document uses the term 'Koori' to refer to Aboriginal or Torres Strait Islander people and 'non Koori' to refer to those inmates who have not identified themselves as Aboriginal or Torres Strait Islander people.

Where possible, New South Wales data is compared with information from other States so that an overall picture of the situation of Aboriginal and Torres Strait Islander people in custody is available.

NSW Inmate Census, 30 June, 1996

On the following pages are tables and graphs which provide a breakdown of information relating to Inmates present in NSW Correctional Centres on 30 June, 1996. The measure of Aboriginality used is that of self report on first entry into custody.

The tables are broken into three sections to provide a summary for all inmates, male inmates and female inmates.

The data show:

At any one time Aboriginal and Torres Strait Islander inmates tend to -

- ☐ be single rather than divorced
- ☐ be younger than non Aboriginal and Torres Strait Islander inmates
- ☐ have a last known address outside the Sydney Metropolitan area
- ☐ have a history of prior adult imprisonment
- ☐ have been sentenced by lower courts
- ☐ have a most serious offence of major assault or assault
- ☐ not have a most serious offence for a drug matter or fraud
- ☐ not be imprisoned for a federal offence.
- ☐ not be serving sentences for periodic detention

SOURCE : N.S.W. PRISON CENSUS 30 JUNE 1996
 ALL INMATES - including Periodic Detention
 SELF REPORTED ABORIGINALITY/TSI AT RECEPTION

	ABORIGINALITY						TOTAL	
	Aboriginal/TSI		Not Aboriginal		Unknown			
TYPE OF SENTENCE								
Not under sentence	121	12.7%	672	10.2%	11	7.8%	804	10.5%
Life	9	.9%	97	1.5%			106	1.4%
Forensic Patient	4	.4%	45	.7%			49	.6%
Minimum & Additional	449	47.2%	3453	52.3%	19	13.5%	3921	51.0%
Fixed Term	263	27.6%	1022	15.5%	7	5.0%	1292	16.8%
Fine Default	23	2.4%	66	1.0%	6	4.3%	95	1.2%
Periodic Detention	83	8.7%	1243	18.8%	98	69.5%	1424	18.5%
TOTAL	952	100.0%	6598	100.0%	141	100.0%	7691	100.0%
LEGAL STATUS								
Sentenced No Appeal	778	81.7%	5421	82.2%	126	89.4%	6325	82.2%
Appellant	49	5.1%	460	7.0%	4	2.8%	513	6.7%
Forensic Patient	4	.4%	45	.7%			49	.6%
Remand/Trial	121	12.7%	668	10.1%	11	7.8%	800	10.4%
Awaiting Deportation			3	.0%			3	.0%
Civil Prisoner			1	.0%			1	.0%
TOTAL	952	100.0%	6598	100.0%	141	100.0%	7691	100.0%
CLASSIFICATION								
PDC/Other	111	11.7%	1341	20.3%	104	73.8%	1556	20.2%
A1	1	.1%	9	.1%			10	.1%
A2	59	6.2%	354	5.4%	3	2.1%	416	5.4%
B	123	12.9%	691	10.5%			814	10.6%
C1	116	12.2%	828	12.5%	4	2.8%	948	12.3%
C2	300	31.5%	1865	28.3%	14	9.9%	2179	28.3%
C3	39	4.1%	538	8.2%	5	3.5%	582	7.6%
E1	9	.9%	47	.7%			56	.7%
E2	74	7.8%	263	4.0%			337	4.4%
Remand/Trial	120	12.6%	662	10.0%	11	7.8%	793	10.3%
TOTAL	952	100.0%	6598	100.0%	141	100.0%	7691	100.0%
MARITAL STATUS								
Never Married	541	56.8%	3272	49.6%	24	17.0%	3837	49.9%
Married/De-facto	330	34.7%	2305	34.9%	18	12.8%	2653	34.5%
Separated	36	3.8%	363	5.5%	2	1.4%	401	5.2%
Divorced	25	2.6%	433	6.6%	4	2.8%	462	6.0%
Widowed	5	.5%	72	1.1%			77	1.0%
Unknown	15	1.6%	153	2.3%	93	66.0%	261	3.4%
TOTAL	952	100.0%	6598	100.0%	141	100.0%	7691	100.0%
MOST SERIOUS OFFENCE								
Murder	41	4.3%	358	5.4%	1	.7%	400	5.2%
Attempt Murder	14	1.5%	63	1.0%			77	1.0%

RESEARCH & STATISTICS DIVISION
 N.S.W. DEPT OF CORRECTIVE SERVICES

SOURCE : N.S.W. PRISON CENSUS 30 JUNE 1996
 ALL INMATES - including Periodic Detention
 SELF REPORTED ABORIGINALITY/TSI AT RECEPTION

	ABORIGINALITY						TOTAL	
	Aboriginal/TSI		Not Aboriginal		Unknown			
Conspiracy to Murder	1	.1%	6	.1%			7	.1%
Manslaughter	15	1.6%	92	1.4%			107	1.4%
Major Assault	141	14.8%	496	7.5%	14	9.9%	651	8.5%
Other Assault	107	11.2%	264	4.0%	7	5.0%	378	4.9%
Rape			6	.1%			6	.1%
Serious Sexual Assault	69	7.2%	351	5.3%	4	2.8%	424	5.5%
Incest/Carnal Knowledge	7	.7%	115	1.7%			122	1.6%
Indecent Assault	15	1.6%	90	1.4%	3	2.1%	108	1.4%
Buggery/Bestial	3	.3%	58	.9%			61	.8%
Robbery Major Assault	67	7.0%	616	9.3%	8	5.7%	691	9.0%
Other Robbery	70	7.4%	267	4.0%	1	.7%	338	4.4%
Fraud	15	1.6%	332	5.0%	19	13.5%	366	4.8%
Break Enter and Steal	143	15.0%	856	13.0%	7	5.0%	1006	13.1%
Other Steal	115	12.1%	700	10.6%	12	8.5%	827	10.8%
Driving/Traffic	52	5.5%	445	6.7%	27	19.1%	524	6.8%
Offences against Order	52	5.5%	362	5.5%	8	5.7%	422	5.5%
Drug Offences	17	1.8%	1009	15.3%	29	20.6%	1055	13.7%
Other Offences	8	.8%	112	1.7%	1	.7%	121	1.6%
TOTAL	952	100.0%	6598	100.0%	141	100.0%	7691	100.0%
AGE AT CENSUS DATE								
17			1	.0%			1	.0%
18	16	1.7%	53	.8%	4	2.8%	73	.9%
19	50	5.3%	191	2.9%	7	5.0%	248	3.2%
20	50	5.3%	256	3.9%	11	7.8%	317	4.1%
21-22	110	11.6%	544	8.2%	14	9.9%	668	8.7%
23-24	149	15.7%	613	9.3%	13	9.2%	775	10.1%
25-29	267	28.0%	1385	21.0%	30	21.3%	1682	21.9%
30-34	137	14.4%	1163	17.6%	17	12.1%	1317	17.1%
35-39	92	9.7%	888	13.5%	9	6.4%	989	12.9%
40-44	41	4.3%	595	9.0%	8	5.7%	644	8.4%
45-49	25	2.6%	399	6.0%	17	12.1%	441	5.7%
50-54	10	1.1%	214	3.2%	7	5.0%	231	3.0%
55-59	1	.1%	156	2.4%	1	.7%	158	2.1%
60-64	4	.4%	77	1.2%	2	1.4%	83	1.1%
65+			63	1.0%	1	.7%	64	.8%
TOTAL	952	100.0%	6598	100.0%	141	100.0%	7691	100.0%
KNOWN PRIOR IMPRISONMENT								
Yes	633	66.5%	3169	48.0%	11	7.8%	3813	49.6%
No	253	26.6%	3127	47.4%	123	87.2%	3503	45.5%
Unknown	66	6.9%	302	4.6%	7	5.0%	375	4.9%
TOTAL	952	100.0%	6598	100.0%	141	100.0%	7691	100.0%

RESEARCH & STATISTICS DIVISION
 N.S.W. DEPT OF CORRECTIVE SERVICES

SOURCE : N.S.W. PRISON CENSUS 30 JUNE 1996
 ALL INMATES - including Periodic Detention
 SELF REPORTED ABORIGINALITY/TSI AT RECEPTION

	ABORIGINALITY						TOTAL	
	Aboriginal/TSI		Not Aboriginal		Unknown			
Last Known Address - LGA								
Leichhardt	11	1.2%	104	1.6%			115	1.5%
Marrickville	27	2.8%	153	2.3%			180	2.3%
Randwick	13	1.4%	116	1.8%	1	.7%	130	1.7%
Sydney	59	6.2%	269	4.1%	1	.7%	329	4.3%
Waverley	1	.1%	52	.8%			53	.7%
Woollahra	1	.1%	42	.6%			43	.6%
Ashfield	7	.7%	49	.7%	1	.7%	57	.7%
Burwood	1	.1%	15	.2%			16	.2%
Concord	1	.1%	13	.2%			14	.2%
Drummoyne	1	.1%	23	.3%			24	.3%
Strathfield	2	.2%	42	.6%	1	.7%	45	.6%
Bankstown	8	.8%	219	3.3%	3	2.1%	230	3.0%
Botany	2	.2%	26	.4%	2	1.4%	30	.4%
Canterbury	7	.7%	162	2.5%	3	2.1%	172	2.2%
Hurstville	3	.3%	67	1.0%			70	.9%
Kogarah	1	.1%	14	.2%			15	.2%
Rockdale	1	.1%	80	1.2%	1	.7%	82	1.1%
Sutherland	2	.2%	79	1.2%			81	1.1%
Camden	2	.2%	11	.2%			13	.2%
Campbelltown	26	2.7%	265	4.0%	2	1.4%	293	3.8%
Liverpool	19	2.0%	336	5.1%	3	2.1%	358	4.7%
Wolondilly			17	.3%	1	.7%	18	.2%
Auburn	1	.1%	72	1.1%			73	.9%
Baulkham Hills	2	.2%	51	.8%	2	1.4%	55	.7%
Blacktown	66	6.9%	361	5.5%	2	1.4%	429	5.6%
Blue Mountains	3	.3%	40	.6%	1	.7%	44	.6%
Hawkesbury	4	.4%	47	.7%			51	.7%
Fairfield	11	1.2%	217	3.3%	4	2.8%	232	3.0%
Holroyd	3	.3%	84	1.3%	3	2.1%	90	1.2%
Parramatta	8	.8%	175	2.7%	2	1.4%	185	2.4%
Penrith	21	2.2%	190	2.9%	2	1.4%	213	2.8%
Hornsby	1	.1%	39	.6%	1	.7%	41	.5%
Hunters Hill	1	.1%	2	.0%			3	.0%
Ku-ring-gai			19	.3%			19	.2%
Lane Cove			9	.1%			9	.1%
Manly			34	.5%			34	.4%
Mosman			10	.2%			10	.1%
North Sydney			21	.3%	2	1.4%	23	.3%
Ryde	1	.1%	57	.9%	1	.7%	59	.8%
Warringah			85	1.3%			85	1.1%
Willoughby			25	.4%			25	.3%
Gosford	9	.9%	126	1.9%	1	.7%	136	1.8%
Wyong	13	1.4%	126	1.9%	1	.7%	140	1.8%
HUNTER	54	5.7%	592	9.0%	2	1.4%	648	8.4%
ILLAWARRA	39	4.1%	359	5.4%	2	1.4%	400	5.2%
RICHMOND TWEED	33	3.5%	118	1.8%			151	2.0%
MID NORTHERN	77	8.1%	185	2.8%			262	3.4%

RESEARCH & STATISTICS DIVISION
 N.S.W. DEPT OF CORRECTIVE SERVICES

SOURCE : N.S.W. PRISON CENSUS 30 JUNE 1996
 ALL INMATES - including Periodic Detention
 SELF REPORTED ABORIGINALITY/TSI AT RECEPTION

	ABORIGINALITY						TOTAL	
	Aboriginal/TSI		Not Aboriginal		Unknown			
NORTHERN	88	9.2%	102	1.5%	2	1.4%	192	2.5%
NORTH WESTERN	115	12.1%	71	1.1%			186	2.4%
CENTRAL WEST	46	4.8%	143	2.2%			189	2.5%
SOUTH EASTERN	21	2.2%	109	1.7%			130	1.7%
MURRUMBIDGEE	30	3.2%	106	1.6%			136	1.8%
MURRAY	24	2.5%	55	.8%			79	1.0%
FARWEST	10	1.1%	10	.2%			20	.3%
Victoria	4	.4%	48	.7%			52	.7%
Queensland	10	1.1%	81	1.2%			91	1.2%
South Australia			8	.1%			8	.1%
Western Australia			20	.3%			20	.3%
Tasmania	1	.1%	6	.1%			7	.1%
Northern Territory			1	.0%			1	.0%
Aust Capital Territory	5	.5%	99	1.5%			104	1.4%
No Fixed Abode	28	2.9%	264	4.0%			292	3.8%
Unknown	28	2.9%	277	4.2%	94	66.7%	399	5.2%
TOTAL	952	100.0%	6598	100.0%	141	100.0%	7691	100.0%

RESEARCH & STATISTICS DIVISION
 N.S.W. DEPT OF CORRECTIVE SERVICES

SOURCE : N.S.W. PRISON CENSUS 30 JUNE 1996
 ALL INMATES - including Periodic Detention
 SELF REPORTED ABORIGINALITY/TSI AT RECEPTION

	ABORIGINALITY						TOTAL	
	Aboriginal/TSI		Not Aboriginal		Unknown			
AGGREGATE SENTENCE								
Unsentenced	121	12.7%	672	10.2%	11	7.8%	804	10.5%
1 - 7 days	1	.1%	11	.2%	2	1.4%	14	.2%
8 days < 1 month	22	2.3%	55	.8%	4	2.8%	81	1.1%
1 month < 3 months	22	2.3%	69	1.0%	2	1.4%	93	1.2%
3 months < 6 months	81	8.5%	274	4.2%	2	1.4%	357	4.6%
6 months < 9 months	91	9.6%	382	5.8%	2	1.4%	475	6.2%
9 months < 1 year	71	7.5%	309	4.7%	3	2.1%	383	5.0%
1 year < 2 years	119	12.5%	633	9.6%	6	4.3%	758	9.9%
2 years < 5 years	162	17.0%	1196	18.1%	8	5.7%	1366	17.8%
5 years < 7 years	64	6.7%	592	9.0%	1	.7%	657	8.5%
7 years < 10 years	51	5.4%	507	7.7%			558	7.3%
10 years < 15 years	29	3.0%	269	4.1%	2	1.4%	300	3.9%
15 years < 20 years	10	1.1%	119	1.8%			129	1.7%
20 years+	12	1.3%	125	1.9%			137	1.8%
Life	9	.9%	97	1.5%			106	1.4%
Forensic Patient	4	.4%	45	.7%			49	.6%
Periodic Detention	83	8.7%	1243	18.8%	98	69.5%	1424	18.5%
TOTAL	952	100.0%	6598	100.0%	141	100.0%	7691	100.0%
LEVEL OF COURT								
Supreme	81	8.5%	612	9.3%	1	.7%	694	9.0%
District	376	39.5%	3425	51.9%	70	49.6%	3871	50.3%
Local	493	51.8%	2462	37.3%	70	49.6%	3025	39.3%
Childrens	1	.1%	6	.1%			7	.1%
Federal/Other	1	.1%	93	1.4%			94	1.2%
TOTAL	952	100.0%	6598	100.0%	141	100.0%	7691	100.0%
IS ANY OFFENCE FEDERAL?								
Yes	3	.3%	340	5.2%	1	.7%	344	4.5%
No	949	99.7%	6258	94.8%	140	99.3%	7347	95.5%
TOTAL	952	100.0%	6598	100.0%	141	100.0%	7691	100.0%

RESEARCH & STATISTICS DIVISION
 N.S.W. DEPT OF CORRECTIVE SERVICES

SOURCE : N.S.W. PRISON CENSUS 30 JUNE 1996
 ALL MALE INMATES - including Periodic Detention
 SELF REPORTED ABORIGINALITY/TSI AT RECEPTION

	ABORIGINALITY						TOTAL	
	Aboriginal/TSI		Not Aboriginal		Unknown			
TYPE OF SENTENCE								
Not under sentence	110	12.5%	628	10.1%	10	7.3%	748	10.3%
Life	8	.9%	96	1.5%			104	1.4%
Forensic Patient	4	.5%	44	.7%			48	.7%
Minimum & Additional	422	48.1%	3305	53.0%	17	12.4%	3744	51.6%
Fixed Term	239	27.2%	957	15.3%	7	5.1%	1203	16.6%
Fine Default	20	2.3%	57	.9%	5	3.6%	82	1.1%
Periodic Detention	75	8.5%	1151	18.5%	98	71.5%	1324	18.3%
TOTAL	878	100.0%	6238	100.0%	137	100.0%	7253	100.0%
LEGAL STATUS								
Sentenced No Appeal	723	82.3%	5139	82.4%	123	89.8%	5985	82.5%
Appellant	41	4.7%	427	6.8%	4	2.9%	472	6.5%
Forensic Patient	4	.5%	44	.7%			48	.7%
Remand/Trial	110	12.5%	624	10.0%	10	7.3%	744	10.3%
Awaiting Deportation			3	.0%			3	.0%
Civil Prisoner			1	.0%			1	.0%
TOTAL	878	100.0%	6238	100.0%	137	100.0%	7253	100.0%
CLASSIFICATION								
PDC/Other	96	10.9%	1238	19.8%	102	74.5%	1436	19.8%
A1	1	.1%	9	.1%			10	.1%
A2	59	6.7%	350	5.6%	3	2.2%	412	5.7%
B	114	13.0%	661	10.6%			775	10.7%
C1	106	12.1%	804	12.9%	4	2.9%	914	12.6%
C2	276	31.4%	1763	28.3%	13	9.5%	2052	28.3%
C3	39	4.4%	495	7.9%	5	3.6%	539	7.4%
E1	9	1.0%	47	.8%			56	.8%
E2	68	7.7%	253	4.1%			321	4.4%
Remand/Trial	110	12.5%	618	9.9%	10	7.3%	738	10.2%
TOTAL	878	100.0%	6238	100.0%	137	100.0%	7253	100.0%
MARITAL STATUS								
Never Married	507	57.7%	3145	50.4%	24	17.5%	3676	50.7%
Married/De-facto	295	33.6%	2148	34.4%	16	11.7%	2459	33.9%
Separated	34	3.9%	332	5.3%	2	1.5%	368	5.1%
Divorced	24	2.7%	406	6.5%	4	2.9%	434	6.0%
Widowed	4	.5%	59	.9%			63	.9%
Unknown	14	1.6%	148	2.4%	91	66.4%	253	3.5%
TOTAL	878	100.0%	6238	100.0%	137	100.0%	7253	100.0%
MOST SERIOUS OFFENCE								
Murder	37	4.2%	342	5.5%	1	.7%	380	5.2%
Attempt Murder	14	1.6%	59	.9%			73	1.0%

RESEARCH & STATISTICS DIVISION
 N.S.W. DEPT OF CORRECTIVE SERVICES

SOURCE : N.S.W. PRISON CENSUS 30 JUNE 1996
 ALL MALE INMATES - including Periodic Detention
 SELF REPORTED ABORIGINALITY/TSI AT RECEPTION

	ABORIGINALITY						TOTAL	
	Aboriginal/TSI		Not Aboriginal		Unknown			
Conspiracy to Murder			4	.1%			4	.1%
Manslaughter	13	1.5%	77	1.2%			90	1.2%
Major Assault	133	15.1%	485	7.8%	13	9.5%	631	8.7%
Other Assault	100	11.4%	259	4.2%	7	5.1%	366	5.0%
Rape			6	.1%			6	.1%
Serious Sexual Assault	69	7.9%	348	5.6%	4	2.9%	421	5.8%
Incest/Carnal Knowledge	7	.8%	115	1.8%			122	1.7%
Indecent Assault	15	1.7%	90	1.4%	3	2.2%	108	1.5%
Buggery/Bestial	3	.3%	57	.9%			60	.8%
Robbery Major Assault	64	7.3%	601	9.6%	8	5.8%	673	9.3%
Other Robbery	65	7.4%	255	4.1%	1	.7%	321	4.4%
Fraud	11	1.3%	262	4.2%	17	12.4%	290	4.0%
Break Enter and Steal	128	14.6%	820	13.1%	7	5.1%	955	13.2%
Other Steal	97	11.0%	653	10.5%	12	8.8%	762	10.5%
Driving/Traffic	50	5.7%	434	7.0%	26	19.0%	510	7.0%
Offences against Order	49	5.6%	341	5.5%	8	5.8%	398	5.5%
Drug Offences	15	1.7%	926	14.8%	29	21.2%	970	13.4%
Other Offences	8	.9%	104	1.7%	1	.7%	113	1.6%
TOTAL	878	100.0%	6238	100.0%	137	100.0%	7253	100.0%
AGE AT CENSUS DATE								
18	15	1.7%	47	.8%	4	2.9%	66	.9%
19	49	5.6%	182	2.9%	7	5.1%	238	3.3%
20	47	5.4%	242	3.9%	11	8.0%	300	4.1%
21-22	102	11.6%	521	8.4%	14	10.2%	637	8.8%
23-24	143	16.3%	580	9.3%	12	8.8%	735	10.1%
25-29	235	26.8%	1318	21.1%	30	21.9%	1583	21.8%
30-34	126	14.4%	1100	17.6%	15	10.9%	1241	17.1%
35-39	85	9.7%	829	13.3%	9	6.6%	923	12.7%
40-44	38	4.3%	570	9.1%	8	5.8%	616	8.5%
45-49	25	2.8%	373	6.0%	17	12.4%	415	5.7%
50-54	9	1.0%	201	3.2%	6	4.4%	216	3.0%
55-59	1	.1%	146	2.3%	1	.7%	148	2.0%
60-64	3	.3%	71	1.1%	2	1.5%	76	1.0%
65+			58	.9%	1	.7%	59	.8%
TOTAL	878	100.0%	6238	100.0%	137	100.0%	7253	100.0%
KNOWN PRIOR IMPRISONMENT								
Yes	582	66.3%	3025	48.5%	11	8.0%	3618	49.9%
No	234	26.7%	2927	46.9%	119	86.9%	3280	45.2%
Unknown	62	7.1%	286	4.6%	7	5.1%	355	4.9%
TOTAL	878	100.0%	6238	100.0%	137	100.0%	7253	100.0%

RESEARCH & STATISTICS DIVISION
 N.S.W. DEPT OF CORRECTIVE SERVICES

SOURCE : N.S.W. PRISON CENSUS 30 JUNE 1996
 ALL MALE INMATES - including Periodic Detention
 SELF REPORTED ABORIGINALITY/TSI AT RECEPTION

	ABORIGINALITY						TOTAL	
	Aboriginal/TSI		Not Aboriginal		Unknown			
Last Known Address - LGA								
Leichhardt	10	1.1%	96	1.5%			106	1.5%
Marrickville	26	3.0%	143	2.3%			169	2.3%
Randwick	11	1.3%	108	1.7%			119	1.6%
Sydney	49	5.6%	252	4.0%	1	.7%	302	4.2%
Waverley			46	.7%			46	.6%
Woollahra	1	.1%	39	.6%			40	.6%
Ashfield	6	.7%	45	.7%	1	.7%	52	.7%
Burwood	1	.1%	14	.2%			15	.2%
Concord	1	.1%	13	.2%			14	.2%
Drummoyne	1	.1%	20	.3%			21	.3%
Strathfield	1	.1%	41	.7%	1	.7%	43	.6%
Bankstown	7	.8%	208	3.3%	3	2.2%	218	3.0%
Botany	2	.2%	23	.4%	2	1.5%	27	.4%
Canterbury	5	.6%	155	2.5%	3	2.2%	163	2.2%
Hurstville	3	.3%	63	1.0%			66	.9%
Kogarah	1	.1%	14	.2%			15	.2%
Rockdale			74	1.2%	1	.7%	75	1.0%
Sutherland	1	.1%	72	1.2%			73	1.0%
Camden	1	.1%	10	.2%			11	.2%
Campbelltown	22	2.5%	251	4.0%	2	1.5%	275	3.8%
Liverpool	17	1.9%	309	5.0%	3	2.2%	329	4.5%
Wolondilly			16	.3%	1	.7%	17	.2%
Auburn	1	.1%	68	1.1%			69	1.0%
Baulkam Hills	1	.1%	49	.8%	2	1.5%	52	.7%
Blacktown	58	6.6%	341	5.5%	2	1.5%	401	5.5%
Blue Mountains	3	.3%	38	.6%	1	.7%	42	.6%
Hawkesbury	4	.5%	46	.7%			50	.7%
Fairfield	11	1.3%	199	3.2%	4	2.9%	214	3.0%
Holroyd	3	.3%	76	1.2%	3	2.2%	82	1.1%
Parramatta	7	.8%	166	2.7%	2	1.5%	175	2.4%
Penrith	21	2.4%	177	2.8%	2	1.5%	200	2.8%
Hornsby	1	.1%	35	.6%	1	.7%	37	.5%
Hunters Hill	1	.1%	2	.0%			3	.0%
Ku-ring-gai			17	.3%			17	.2%
Lane Cove			9	.1%			9	.1%
Manly			32	.5%			32	.4%
Mosman			10	.2%			10	.1%
North Sydney			18	.3%	2	1.5%	20	.3%
Ryde	1	.1%	55	.9%	1	.7%	57	.8%
Warringah			82	1.3%			82	1.1%
Willoughby			24	.4%			24	.3%
Gosford	9	1.0%	116	1.9%	1	.7%	126	1.7%
Wyong	10	1.1%	120	1.9%	1	.7%	131	1.8%
HUNTER	49	5.6%	572	9.2%	1	.7%	622	8.6%
ILLAWARRA	37	4.2%	337	5.4%	2	1.5%	376	5.2%
RICHMOND TWEED	33	3.8%	111	1.8%			144	2.0%
MID NORTHERN	70	8.0%	180	2.9%			250	3.4%

RESEARCH & STATISTICS DIVISION
 N.S.W. DEPT OF CORRECTIVE SERVICES

SOURCE : N.S.W. PRISON CENSUS 30 JUNE 1996
 ALL MALE INMATES - including Periodic Detention
 SELF REPORTED ABORIGINALITY/TSI AT RECEPTION

	ABORIGINALITY						TOTAL	
	Aboriginal/TSI		Not Aboriginal		Unknown			
NORTHERN	88	10.0%	93	1.5%	2	1.5%	183	2.5%
NORTH WESTERN	113	12.9%	70	1.1%			183	2.5%
CENTRAL WEST	44	5.0%	138	2.2%			182	2.5%
SOUTH EASTERN	20	2.3%	108	1.7%			128	1.8%
MURRUMBIDGEE	29	3.3%	102	1.6%			131	1.8%
MURRAY	23	2.6%	51	.8%			74	1.0%
FARWEST	9	1.0%	9	.1%			18	.2%
Victoria	4	.5%	47	.8%			51	.7%
Queensland	9	1.0%	80	1.3%			89	1.2%
South Australia			8	.1%			8	.1%
Western Australia			20	.3%			20	.3%
Tasmania	1	.1%	6	.1%			7	.1%
Northern Territory			1	.0%			1	.0%
Aust Capital Territory	4	.5%	94	1.5%			98	1.4%
No Fixed Abode	25	2.8%	251	4.0%			276	3.8%
Unknown	23	2.6%	268	4.3%	92	67.2%	383	5.3%
TOTAL	878	100.0%	6238	100.0%	137	100.0%	7253	100.0%

RESEARCH & STATISTICS DIVISION
 N.S.W. DEPT OF CORRECTIVE SERVICES

SOURCE : N.S.W. PRISON CENSUS 30 JUNE 1996
 ALL MALE INMATES - including Periodic Detention
 SELF REPORTED ABORIGINALITY/TSI AT RECEPTION

	ABORIGINALITY						TOTAL	
	Aboriginal/TSI		Not Aboriginal		Unknown			
AGGREGATE SENTENCE								
Unsentenced	110	12.5%	628	10.1%	10	7.3%	748	10.3%
1 - 7 days	1	.1%	9	.1%	2	1.5%	12	.2%
8 days < 1 month	19	2.2%	49	.8%	3	2.2%	71	1.0%
1 month < 3 months	22	2.5%	59	.9%	2	1.5%	83	1.1%
3 months < 6 months	75	8.5%	250	4.0%	2	1.5%	327	4.5%
6 months < 9 months	80	9.1%	359	5.8%	2	1.5%	441	6.1%
9 months < 1 year	65	7.4%	294	4.7%	2	1.5%	361	5.0%
1 year < 2 years	110	12.5%	597	9.6%	5	3.6%	712	9.8%
2 years < 5 years	148	16.9%	1146	18.4%	8	5.8%	1302	18.0%
5 years < 7 years	60	6.8%	570	9.1%	1	.7%	631	8.7%
7 years < 10 years	51	5.8%	490	7.9%			541	7.5%
10 years < 15 years	28	3.2%	260	4.2%	2	1.5%	290	4.0%
15 years < 20 years	10	1.1%	112	1.8%			122	1.7%
20 years+	12	1.4%	124	2.0%			136	1.9%
Life	8	.9%	96	1.5%			104	1.4%
Forensic Patient	4	.5%	44	.7%			48	.7%
Periodic Detention	75	8.5%	1151	18.5%	98	71.5%	1324	18.3%
TOTAL	878	100.0%	6238	100.0%	137	100.0%	7253	100.0%
LEVEL OF COURT								
Supreme	76	8.7%	574	9.2%	1	.7%	651	9.0%
District	350	39.9%	3268	52.4%	68	49.6%	3686	50.8%
Local	451	51.4%	2301	36.9%	68	49.6%	2820	38.9%
Childrens	1	.1%	6	.1%			7	.1%
Federal/Other			89	1.4%			89	1.2%
TOTAL	878	100.0%	6238	100.0%	137	100.0%	7253	100.0%
IS ANY OFFENCE FEDERAL?								
Yes	3	.3%	308	4.9%	1	.7%	312	4.3%
No	875	99.7%	5930	95.1%	136	99.3%	6941	95.7%
TOTAL	878	100.0%	6238	100.0%	137	100.0%	7253	100.0%

RESEARCH & STATISTICS DIVISION
 N.S.W. DEPT OF CORRECTIVE SERVICES

SOURCE : N.S.W. PRISON CENSUS 30 JUNE 1996
 ALL FEMALE INMATES - including Periodic Detention
 SELF REPORTED ABORIGINALITY/TSI AT RECEPTION

	ABORIGINALITY						TOTAL	
	Aboriginal/TSI		Not Aboriginal		Unknown			
TYPE OF SENTENCE								
Not under sentence	11	14.9%	44	12.2%	1	25.0%	56	12.8%
Life	1	1.4%	1	.3%			2	.5%
Forensic Patient			1	.3%			1	.2%
Minimum & Additional	27	36.5%	148	41.1%	2	50.0%	177	40.4%
Fixed Term	24	32.4%	65	18.1%			89	20.3%
Fine Default	3	4.1%	9	2.5%	1	25.0%	13	3.0%
Periodic Detention	8	10.8%	92	25.6%			100	22.8%
TOTAL	74	100.0%	360	100.0%	4	100.0%	438	100.0%
LEGAL STATUS								
Sentenced No Appeal	55	74.3%	282	78.3%	3	75.0%	340	77.6%
Appellant	8	10.8%	33	9.2%			41	9.4%
Forensic Patient			1	.3%			1	.2%
Remand/Trial	11	14.9%	44	12.2%	1	25.0%	56	12.8%
TOTAL	74	100.0%	360	100.0%	4	100.0%	438	100.0%
CLASSIFICATION								
PDC/Other	15	20.3%	103	28.6%	2	50.0%	120	27.4%
A2			4	1.1%			4	.9%
B	9	12.2%	30	8.3%			39	8.9%
C1	10	13.5%	24	6.7%			34	7.8%
C2	24	32.4%	102	28.3%	1	25.0%	127	29.0%
C3			43	11.9%			43	9.8%
E2	6	8.1%	10	2.8%			16	3.7%
Remand/Trial	10	13.5%	44	12.2%	1	25.0%	55	12.6%
TOTAL	74	100.0%	360	100.0%	4	100.0%	438	100.0%
MARITAL STATUS								
Never Married	34	45.9%	127	35.3%			161	36.8%
Married/De-facto	35	47.3%	157	43.6%	2	50.0%	194	44.3%
Separated	2	2.7%	31	8.6%			33	7.5%
Divorced	1	1.4%	27	7.5%			28	6.4%
Widowed	1	1.4%	13	3.6%			14	3.2%
Unknown	1	1.4%	5	1.4%	2	50.0%	8	1.8%
TOTAL	74	100.0%	360	100.0%	4	100.0%	438	100.0%
MOST SERIOUS OFFENCE								
Murder	4	5.4%	16	4.4%			20	4.6%
Attempt Murder			4	1.1%			4	.9%
Conspiracy to Murder	1	1.4%	2	.6%			3	.7%
Manslaughter	2	2.7%	15	4.2%			17	3.9%
Major Assault	8	10.8%	11	3.1%	1	25.0%	20	4.6%
Other Assault	7	9.5%	5	1.4%			12	2.7%

RESEARCH & STATISTICS DIVISION
 N.S.W. DEPT OF CORRECTIVE SERVICES

SOURCE : N.S.W. PRISON CENSUS 30 JUNE 1996
 ALL FEMALE INMATES - including Periodic Detention
 SELF REPORTED ABORIGINALITY/TSI AT RECEPTION

	ABORIGINALITY						TOTAL	
	Aboriginal/TSI		Not Aboriginal		Unknown			
Serious Sexual Assault			3	.8%			3	.7%
Buggery/Bestial			1	.3%			1	.2%
Robbery Major Assault	3	4.1%	15	4.2%			18	4.1%
Other Robbery	5	6.8%	12	3.3%			17	3.9%
Fraud	4	5.4%	70	19.4%	2	50.0%	76	17.4%
Break Enter and Steal	15	20.3%	36	10.0%			51	11.6%
Other Steal	18	24.3%	47	13.1%			65	14.8%
Driving/Traffic	2	2.7%	11	3.1%	1	25.0%	14	3.2%
Offences against Order	3	4.1%	21	5.8%			24	5.5%
Drug Offences	2	2.7%	83	23.1%			85	19.4%
Other Offences			8	2.2%			8	1.8%
TOTAL	74	100.0%	360	100.0%	4	100.0%	438	100.0%
AGE AT CENSUS DATE								
17			1	.3%			1	.2%
18	1	1.4%	6	1.7%			7	1.6%
19	1	1.4%	9	2.5%			10	2.3%
20	3	4.1%	14	3.9%			17	3.9%
21-22	8	10.8%	23	6.4%			31	7.1%
23-24	6	8.1%	33	9.2%	1	25.0%	40	9.1%
25-29	32	43.2%	67	18.6%			99	22.6%
30-34	11	14.9%	63	17.5%	2	50.0%	76	17.4%
35-39	7	9.5%	59	16.4%			66	15.1%
40-44	3	4.1%	25	6.9%			28	6.4%
45-49			26	7.2%			26	5.9%
50-54	1	1.4%	13	3.6%	1	25.0%	15	3.4%
55-59			10	2.8%			10	2.3%
60-64	1	1.4%	6	1.7%			7	1.6%
65+			5	1.4%			5	1.1%
TOTAL	74	100.0%	360	100.0%	4	100.0%	438	100.0%
KNOWN PRIOR IMPRISONMENT								
Yes	51	68.9%	144	40.0%			195	44.5%
No	19	25.7%	200	55.6%	4	100.0%	223	50.9%
Unknown	4	5.4%	16	4.4%			20	4.6%
TOTAL	74	100.0%	360	100.0%	4	100.0%	438	100.0%

RESEARCH & STATISTICS DIVISION
 N.S.W. DEPT OF CORRECTIVE SERVICES

SOURCE : N.S.W. PRISON CENSUS 30 JUNE 1996
 ALL FEMALE INMATES - including Periodic Detention
 SELF REPORTED ABORIGINALITY/TSI AT RECEPTION

	ABORIGINALITY				TOTAL	
	Aboriginal/TSI		Not Aboriginal		Unknown	
Last Known Address - LGA						
Leichhardt	1	1.4%	8	2.2%		9 2.1%
Marrickville	1	1.4%	10	2.8%		11 2.5%
Randwick	2	2.7%	8	2.2%	1 25.0%	11 2.5%
Sydney	10	13.5%	17	4.7%		27 6.2%
Waverley	1	1.4%	6	1.7%		7 1.6%
Woollahra			3	.8%		3 .7%
Ashfield	1	1.4%	4	1.1%		5 1.1%
Burwood			1	.3%		1 .2%
Drummoyne			3	.8%		3 .7%
Strathfield	1	1.4%	1	.3%		2 .5%
Bankstown	1	1.4%	11	3.1%		12 2.7%
Botany			3	.8%		3 .7%
Canterbury	2	2.7%	7	1.9%		9 2.1%
Hurstville			4	1.1%		4 .9%
Rockdale	1	1.4%	6	1.7%		7 1.6%
Sutherland	1	1.4%	7	1.9%		8 1.8%
Camden	1	1.4%	1	.3%		2 .5%
Campbelltown	4	5.4%	14	3.9%		18 4.1%
Liverpool	2	2.7%	27	7.5%		29 6.6%
Wolondilly			1	.3%		1 .2%
Auburn			4	1.1%		4 .9%
Baulkam Hills	1	1.4%	2	.6%		3 .7%
Blacktown	8	10.8%	20	5.6%		28 6.4%
Blue Mountains			2	.6%		2 .5%
Hawkesbury			1	.3%		1 .2%
Fairfield			18	5.0%		18 4.1%
Holroyd			8	2.2%		8 1.8%
Parramatta	1	1.4%	9	2.5%		10 2.3%
Penrith			13	3.6%		13 3.0%
Hornsby			4	1.1%		4 .9%
Ku-ring-gai			2	.6%		2 .5%
Manly			2	.6%		2 .5%
North Sydney			3	.8%		3 .7%
Ryde			2	.6%		2 .5%
Warringah			3	.8%		3 .7%
Willoughby			1	.3%		1 .2%
Gosford			10	2.8%		10 2.3%
Wyong	3	4.1%	6	1.7%		9 2.1%
HUNTER	5	6.8%	20	5.6%	1 25.0%	26 5.9%
ILLAWARRA	2	2.7%	22	6.1%		24 5.5%
RICHMOND TWEED			7	1.9%		7 1.6%
MID NORTHERN	7	9.5%	5	1.4%		12 2.7%
NORTHERN			9	2.5%		9 2.1%
NORTH WESTERN	2	2.7%	1	.3%		3 .7%
CENTRAL WEST	2	2.7%	5	1.4%		7 1.6%
SOUTH EASTERN	1	1.4%	1	.3%		2 .5%
MURRUMBIDGEE	1	1.4%	4	1.1%		5 1.1%

RESEARCH & STATISTICS DIVISION
 N.S.W. DEPT OF CORRECTIVE SERVICES

SOURCE : N.S.W. PRISON CENSUS 30 JUNE 1996
 ALL FEMALE INMATES - including Periodic Detention
 SELF REPORTED ABORIGINALITY/TSI AT RECEPTION

	ABORIGINALITY					TOTAL		
	Aboriginal/TSI		Not Aboriginal		Unknown			
MURRAY	1	1.4%	4	1.1%			5	1.1%
FARWEST	1	1.4%	1	.3%			2	.5%
Victoria			1	.3%			1	.2%
Queensland	1	1.4%	1	.3%			2	.5%
Aust Capital Territory	1	1.4%	5	1.4%			6	1.4%
No Fixed Abode	3	4.1%	13	3.6%			16	3.7%
Unknown	5	6.8%	9	2.5%	2	50.0%	16	3.7%
TOTAL	74	100.0%	360	100.0%	4	100.0%	438	100.0%

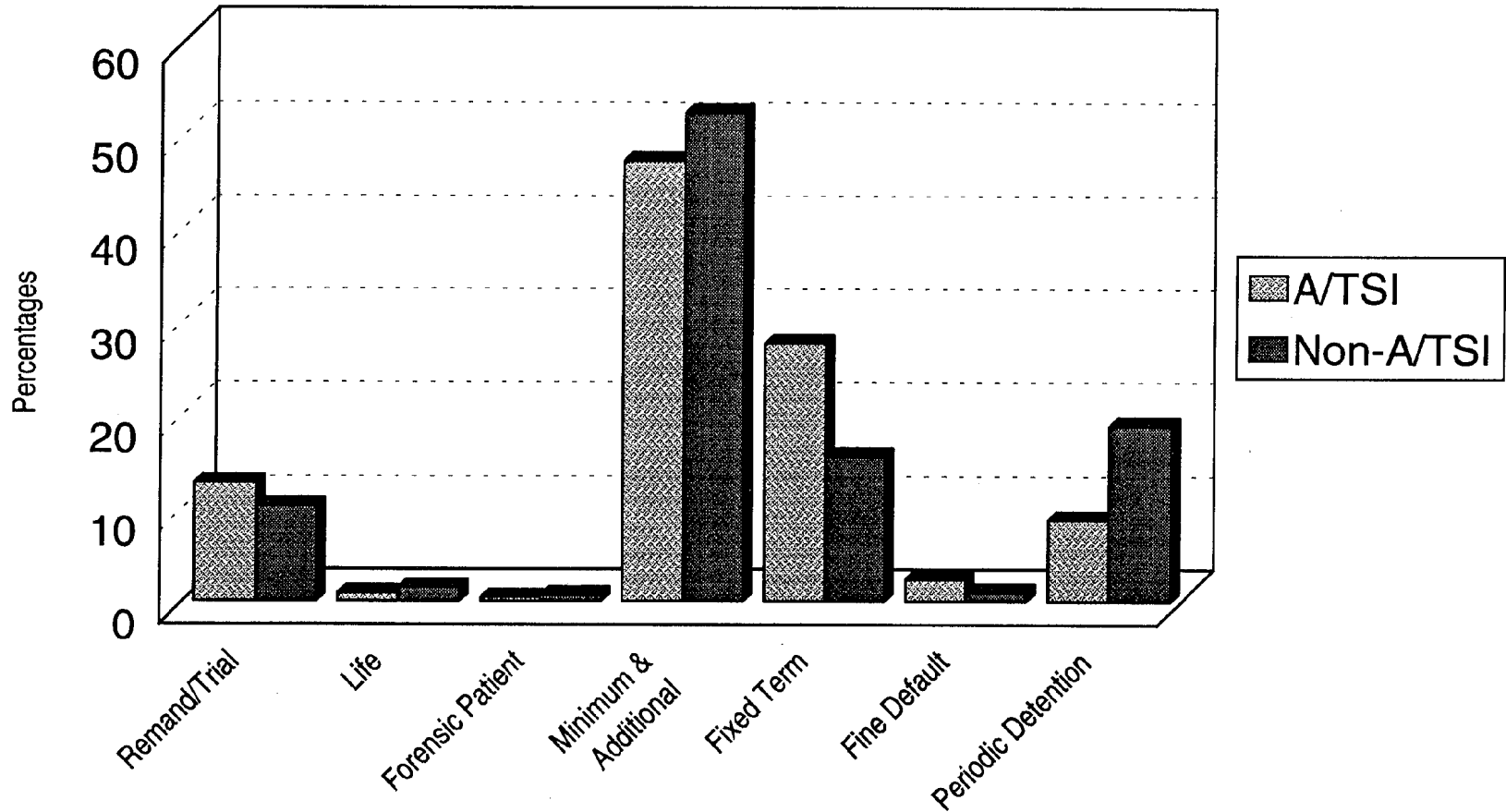
RESEARCH & STATISTICS DIVISION
 N.S.W. DEPT OF CORRECTIVE SERVICES

SOURCE : N.S.W. PRISON CENSUS 30 JUNE 1996
 ALL FEMALE INMATES - including Periodic Detention
 SELF REPORTED ABORIGINALITY/TSI AT RECEPTION

	ABORIGINALITY						TOTAL	
	Aboriginal/TSI		Not Aboriginal		Unknown			
AGGREGATE SENTENCE								
Unsentenced	11	14.9%	44	12.2%	1	25.0%	56	12.8%
1 - 7 days			2	.6%			2	.5%
8 days < 1 month	3	4.1%	6	1.7%	1	25.0%	10	2.3%
1 month < 3 months			10	2.8%			10	2.3%
3 months < 6 months	6	8.1%	24	6.7%			30	6.8%
6 months < 9 months	11	14.9%	23	6.4%			34	7.8%
9 months < 1 year	6	8.1%	15	4.2%	1	25.0%	22	5.0%
1 year < 2 years	9	12.2%	36	10.0%	1	25.0%	46	10.5%
2 years < 5 years	14	18.9%	50	13.9%			64	14.6%
5 years < 7 years	4	5.4%	22	6.1%			26	5.9%
7 years < 10 years			17	4.7%			17	3.9%
10 years < 15 years	1	1.4%	9	2.5%			10	2.3%
15 years < 20 years			7	1.9%			7	1.6%
20 years+			1	.3%			1	.2%
Life	1	1.4%	1	.3%			2	.5%
Forensic Patient			1	.3%			1	.2%
Periodic Detention	8	10.8%	92	25.6%			100	22.8%
TOTAL	74	100.0%	360	100.0%	4	100.0%	438	100.0%
LEVEL OF COURT								
Supreme	5	6.8%	38	10.6%			43	9.8%
District	26	35.1%	157	43.6%	2	50.0%	185	42.2%
Local	42	56.8%	161	44.7%	2	50.0%	205	46.8%
Federal/Other	1	1.4%	4	1.1%			5	1.1%
TOTAL	74	100.0%	360	100.0%	4	100.0%	438	100.0%
IS ANY OFFENCE FEDERAL?								
Yes			32	8.9%			32	7.3%
No	74	100.0%	328	91.1%	4	100.0%	406	92.7%
TOTAL	74	100.0%	360	100.0%	4	100.0%	438	100.0%

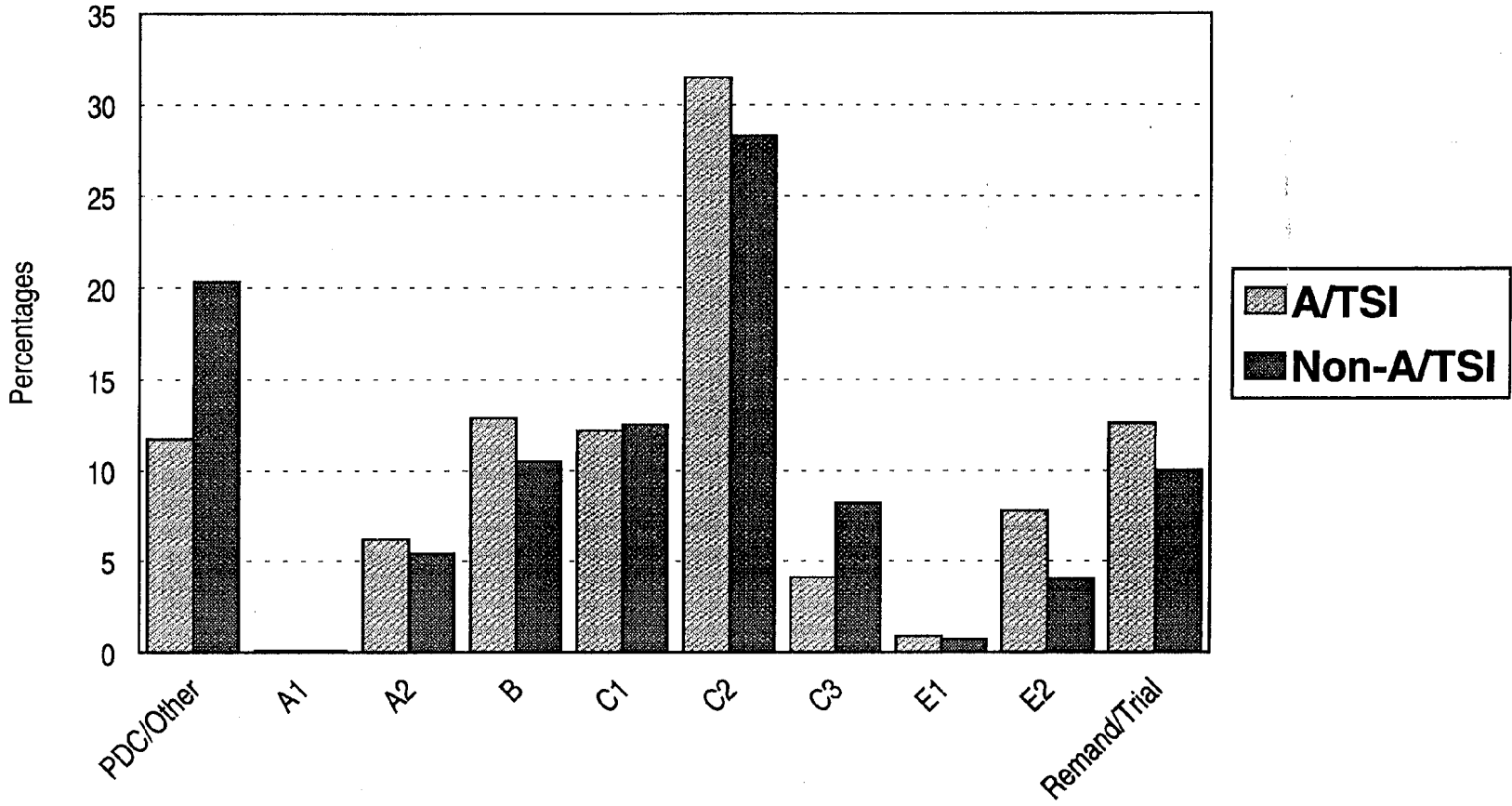
RESEARCH & STATISTICS DIVISION
 N.S.W. DEPT OF CORRECTIVE SERVICES

Sentence Type for NSW Inmates 30 June 1996



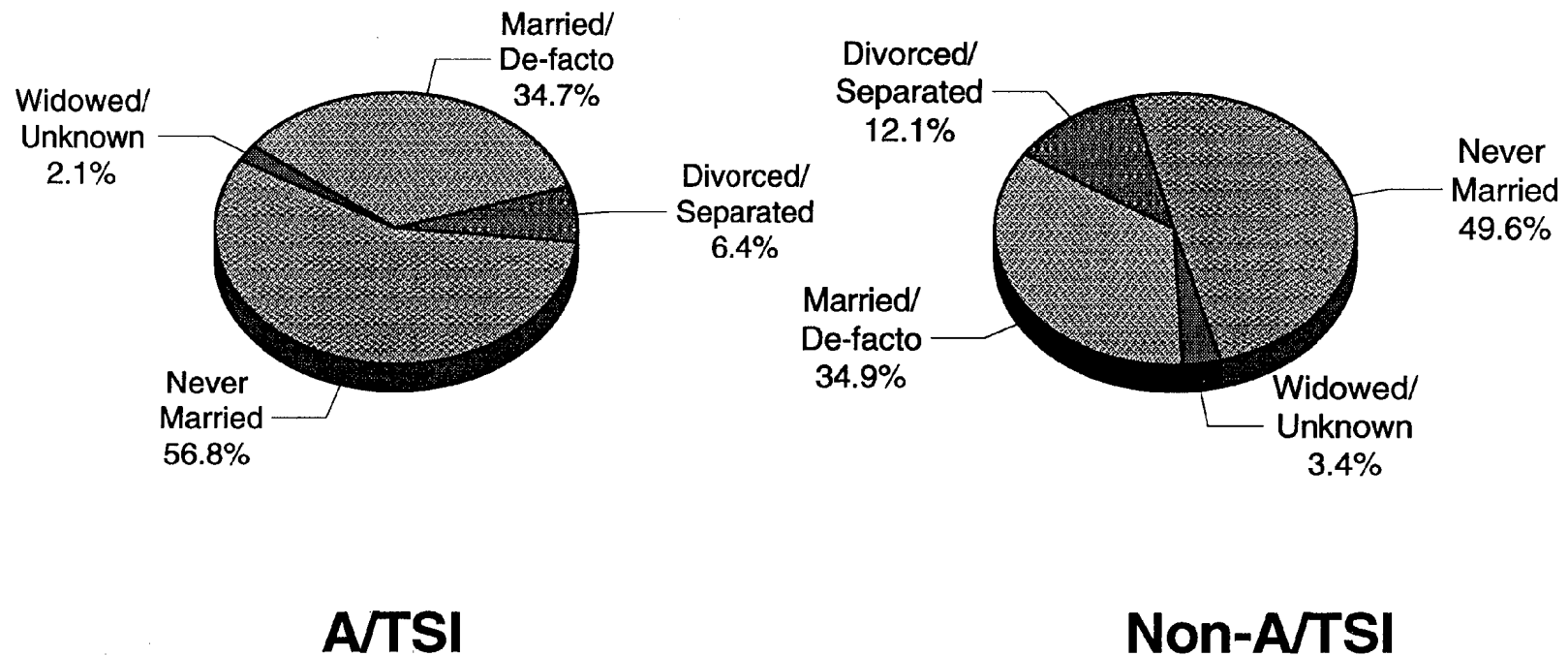
Security Classification of NSW Inmates 30 June 1996

Page: 18

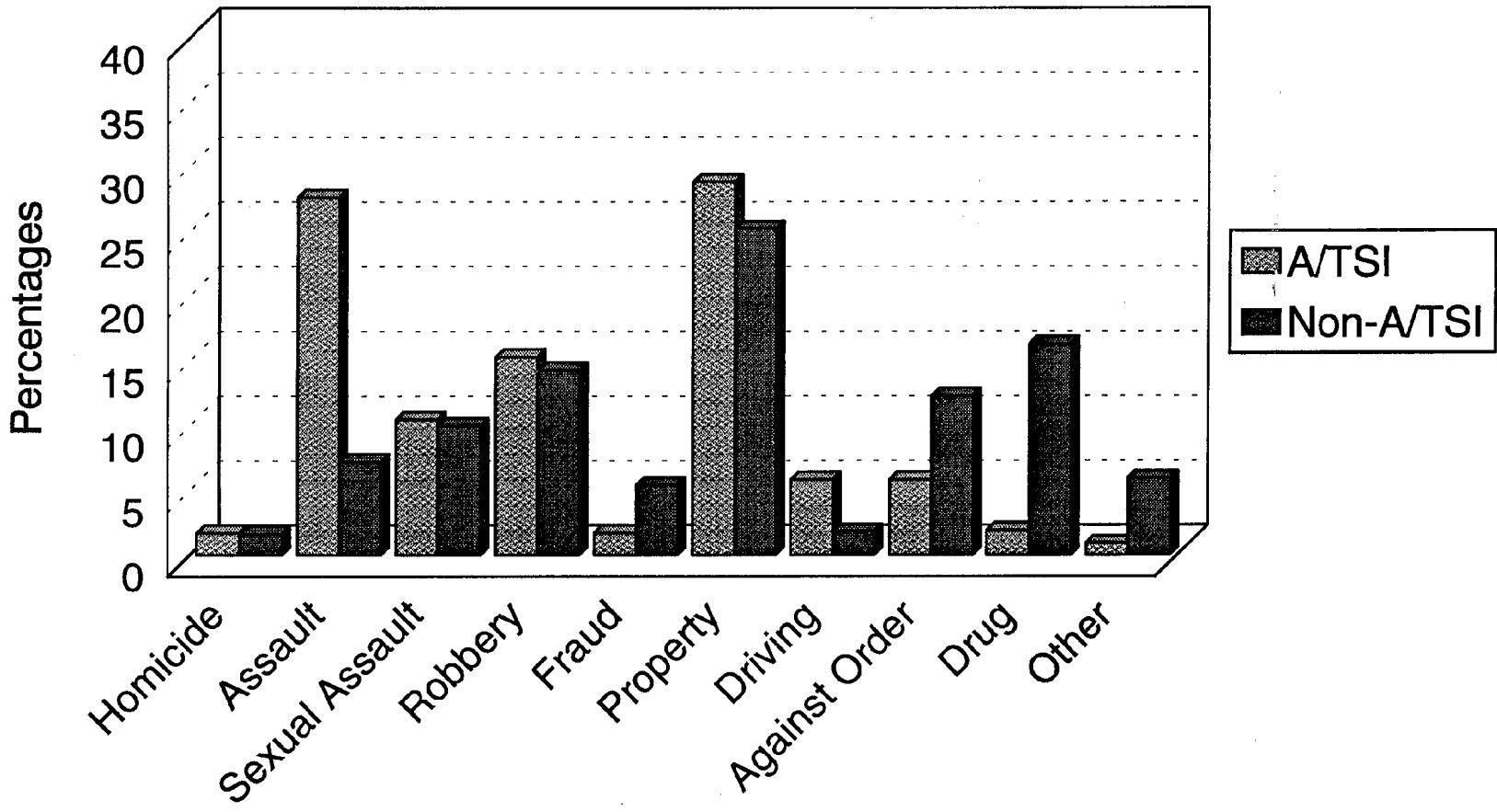


Research & Statistics, NSW Department of Corrective Services.

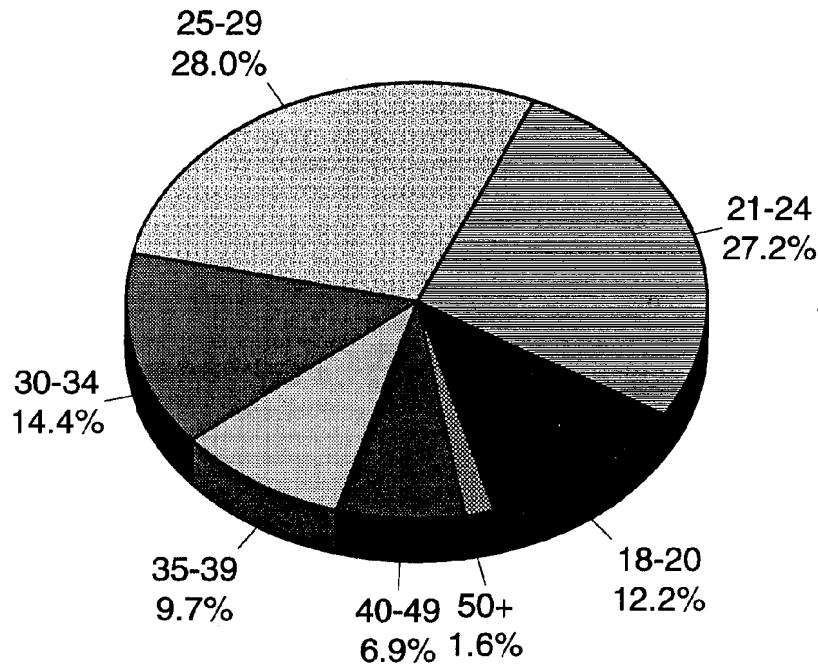
Marital Status of NSW Inmates 30 June 1996



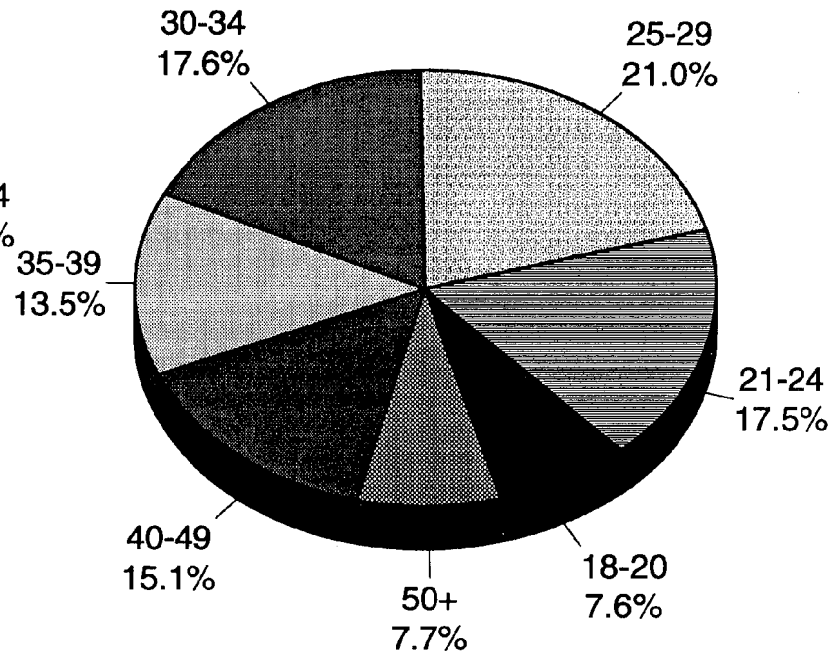
Most Serious Offence of NSW Inmates 30 June 1996 Percentages



Age of NSW Inmates 30 June 1996



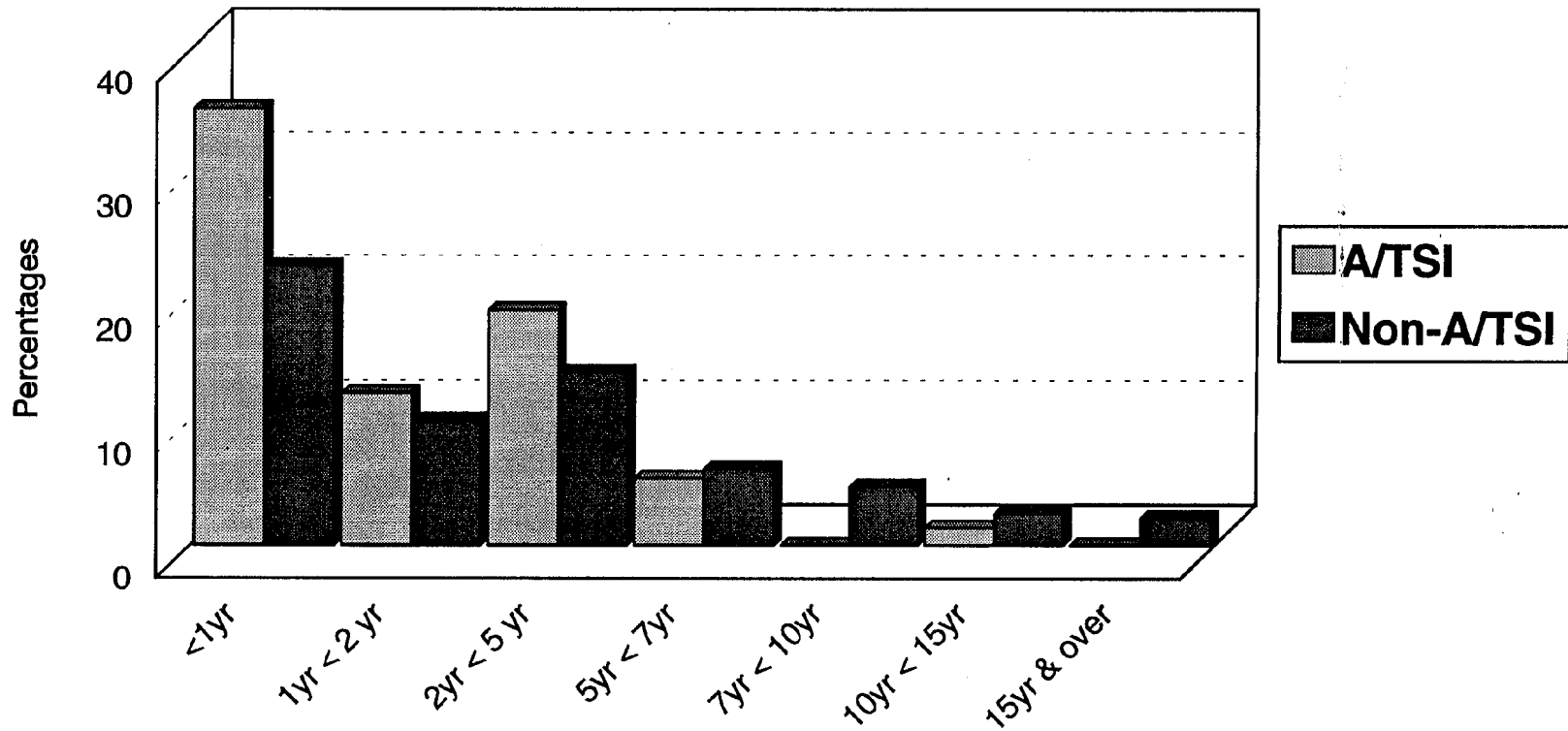
A/TSI



Non-A/TSI

Aggregate* Sentence for NSW Inmates

30 June 1996



Inmates sentenced to either a fixed or minimum term of imprisonment (Excluding life, forensic patient and periodic detention)
 * (Minimum + Additional Term).

NSW Inmate Census 1982 - 1996

The data presented are for NSW Inmate Censuses conducted on 30 June for each year from 1982 onwards. They show:

- ❑ Aboriginal and Torres Strait Islander inmate numbers have been steadily increasing since 1982 to reach a current number almost five times that present in 1982
- ❑ Aboriginal and Torres Strait Islander inmates, as a *percentage* of the total inmate population, have been increasing since 1982 to reach a current level double that for 1982
- ❑ Aboriginal and Torres Strait Islander *female* inmate numbers have significantly increased since 1982
- ❑ Aboriginal and Torres Strait Islander *female* inmates, as a percentage of the total Aboriginal and Torres Strait Islander inmate population, have been increasing since 1982 to reach a current level double that for 1982
- ❑ Aboriginal and Torres Strait Islander inmates *in full-time custody* have been generally increasing in both number and percentage terms for both males and females since 1982. Female Aboriginal and Torres Strait Islander inmate numbers and percent have increased in particular over the last few years.

**NSW Inmates 30 June Selected Years
Aboriginality**

Year	Non-Aboriginal	Aboriginal/TSI	Unknown	Total
1982	3476	216	27	3719
1983	3394	236	103	3733
1984	3047	242	65	3354
1985	3726	304	85	4115
1986	3763	338	129	4230
1987	4105	369	77	4551
1988	4097	385	209	4691
1989	4839	415	7	5261
1990	5510	579	278	6367
1991	6069	664	370	7103
1992	6740	648	97	7485
1993	6809	729	94	7632
1994	6828	827	56	7711
1995	6754	888	107	7749
1996	6598	952	141	7691

**Percentage of NSW Inmates, 30 June Selected Years
Aboriginality**

Year	Non-Aboriginal	Aboriginal/TSI	Unknown	Total
1982	93.5	5.8	0.7	100.0
1983	90.9	6.3	2.8	100.0
1984	90.9	7.2	2.0	100.0
1985	90.6	7.4	2.1	100.0
1986	89.0	8.0	3.1	100.0
1987	90.2	8.1	1.7	100.0
1988	87.3	8.2	4.5	100.0
1989	92.0	7.9	0.1	100.0
1990	86.5	9.1	4.4	100.0
1991	85.4	9.3	5.2	100.0
1992	90.0	8.7	1.3	100.0
1993	89.2	9.6	1.2	100.0
1994	88.6	10.7	0.7	100.0
1995	87.2	11.5	1.3	100.0
1996	85.8	12.4	1.8	100.0

Source: NSW Prison Census, Research & Statistics Unit, NSW Department of Corrective Services.

**Aboriginal & Torres Strait Islander Inmates
30 June Selected Years**

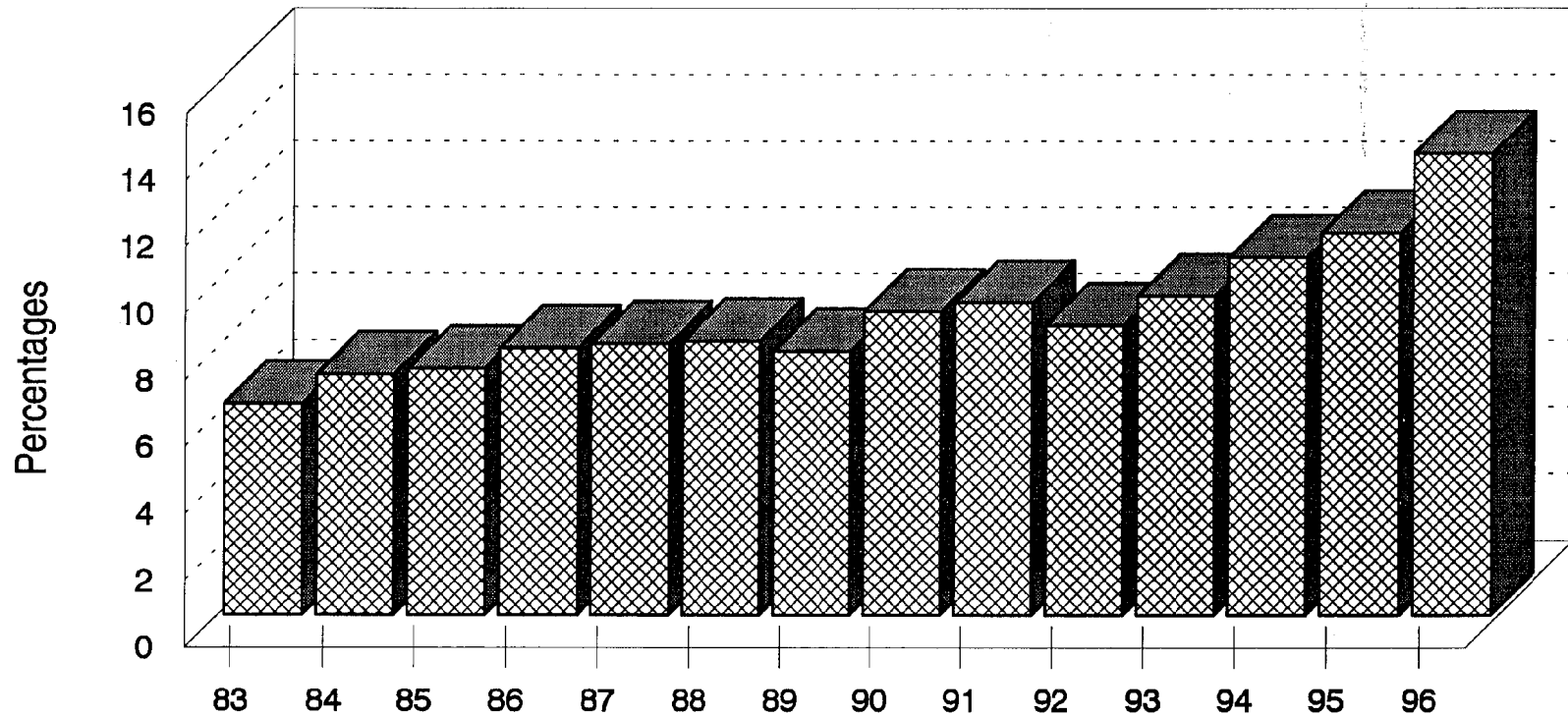
Year	Male	Female	Total
1982	210	6	216
1983	226	10	236
1984	234	8	242
1985	294	10	304
1986	325	13	338
1987	350	19	369
1988	358	27	385
1989	382	33	415
1990	543	36	579
1991	613	51	664
1992	599	49	648
1993	685	44	729
1994	764	63	827
1995	831	57	888
1996	878	74	952

**Aboriginal & Torres Strait Islander Inmates:
30 June Selected Years - Percentages**

Year	Male	Female	Total
1982	97.2	2.8	100.0
1983	95.8	4.2	100.0
1984	96.7	3.3	100.0
1985	96.7	3.3	100.0
1986	96.2	3.8	100.0
1987	94.9	5.1	100.0
1988	93.0	7.0	100.0
1989	92.1	7.9	100.0
1990	93.8	6.2	100.0
1991	92.3	7.7	100.0
1992	92.4	7.6	100.0
1993	94.0	6.0	100.0
1994	92.4	7.6	100.0
1995	93.6	6.4	100.0
1996	92.2	7.8	100.0

Source: NSW Prison Census, Research & Statistics Unit, NSW Department of Corrective Services

Aboriginal or Torres Strait Islanders as a percentage of Total Inmate Population 30th June at each Year (including Periodic Detainees)



ABORIGINAL & TORRES STRAIT ISLANDER INMATES

Aboriginal and Torres Strait Islander inmates in full-time custody

30 June	Aboriginal/TSI Inmates				Total Full-time	
	Males		Females		Males	Females
	number	%	number	%		
1982	179	6.2	4	3.9	2905	102
1983	185	6.5	10	7.5	2829	134
1984	198	7.9	7	6.3	2500	112
1985	256	8.4	6	3.8	3055	156
1986	268	8.5	9	5.9	3161	153
1987	284	8.5	13	7.6	3328	172
1988	286	8.6	18	9.7	3340	186
1989	357	8.0	32	12.1	4472	263
1990	515	9.9	35	10.3	5197	341
1991	578	10.3	47	14.1	5626	334
1992	567	9.6	43	13.0	5898	330
1993	647	10.6	40	13.1	6087	305
1994	717	11.8	59	18.4	6100	320
1995	773	12.7	46	14.6	6070	314
1996	803	13.5	66	19.5	5929	338

Monthly Statistics 1993 - 1996

The data presented are for a count of Aboriginal and Torres Strait Islander inmates present as at the first Sunday of the month from 1993 onwards.

The data show:

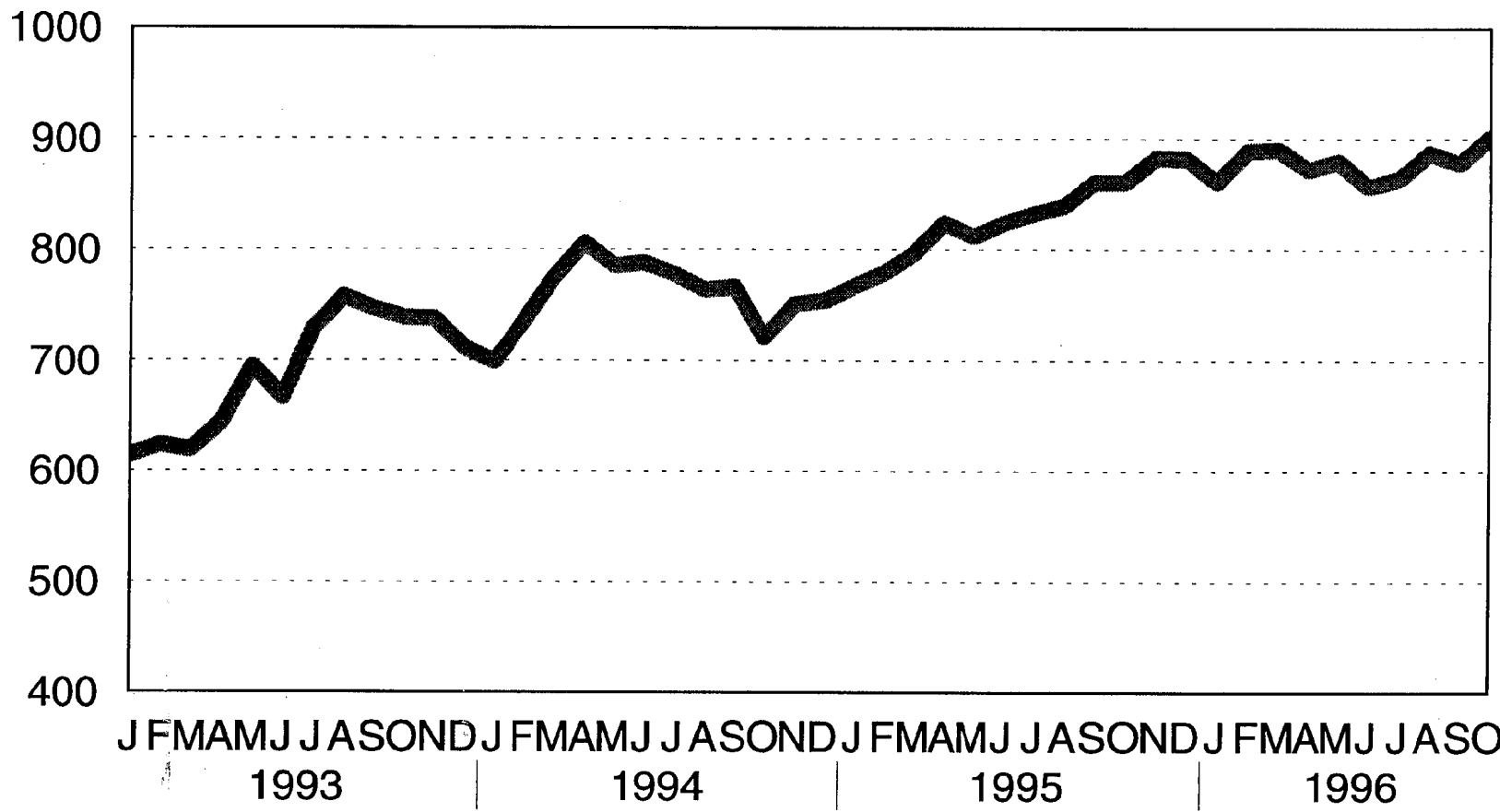
- ☐ An increase in the total number of Aboriginal and Torres Strait Islander inmates present in *full-time custody* from 612 in January 1993 to 902 in October 1996.

- ☐ An increase in the number of Aboriginal and Torres Strait Islander periodic detainees (weekend detention)

- ☐ The pattern of increase in Aboriginal and Torres Strait Islander inmate numbers roughly follows a seasonal pattern like that for total inmate numbers with dips corresponding to court holiday closures

- ☐ Aboriginal and Torres Strait Islander inmates tend to present in larger numbers at certain correctional centres (Bathurst, Goulburn and Grafton)

Number of Aboriginals/TSI*: NSW Correctional Centres Full-time Custody First Sunday of each month

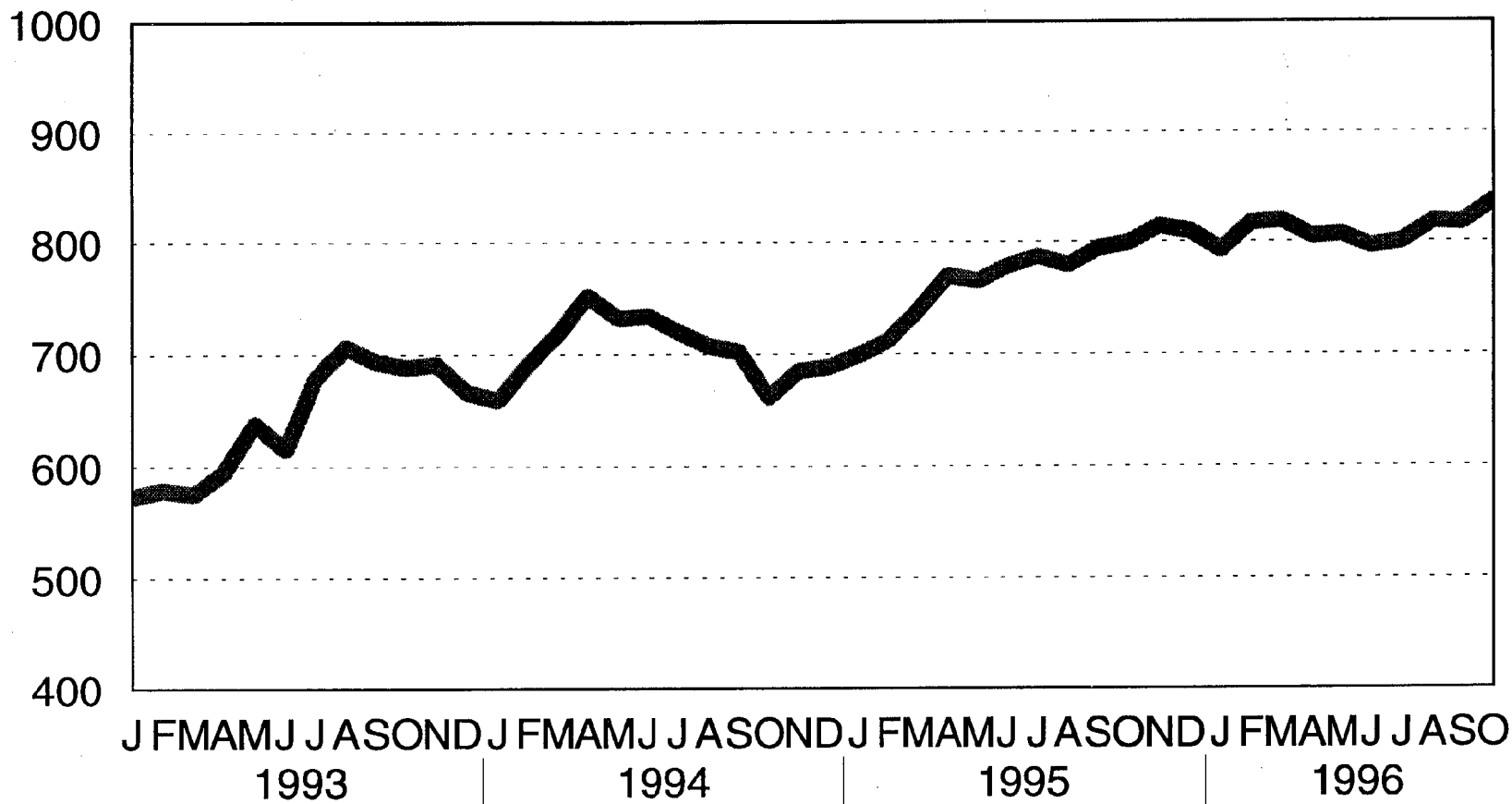


Page: 29

* Self reported Aboriginality/TSI at reception.
Research and Statistics, NSW Department of Corrective Services.

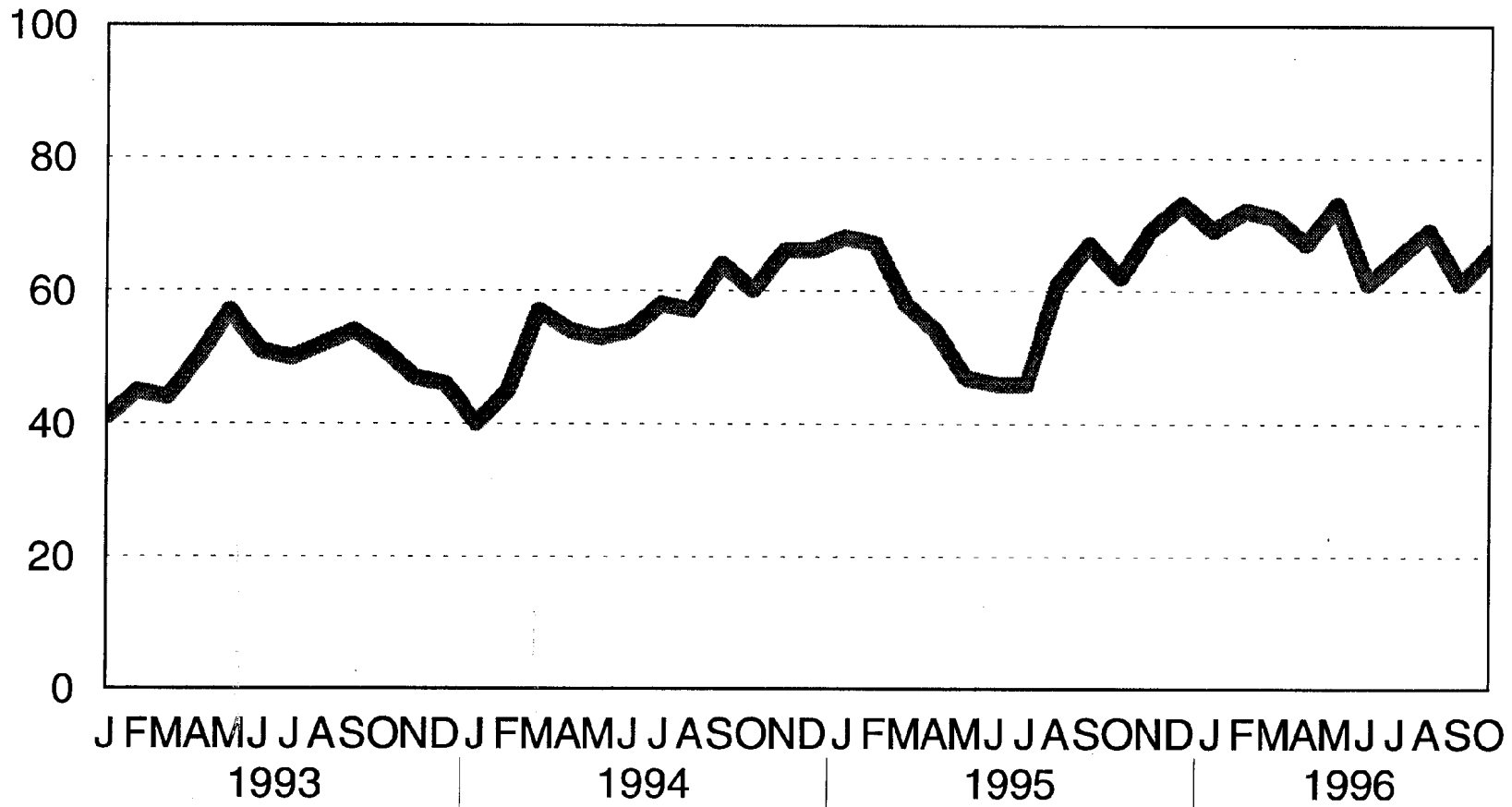
Male Aboriginals/ TSI*: NSW Correctional Centres Full-time custody First Sunday of each month

Page: 30



* Self reported Aboriginality/TSI at reception.
Research and Statistics, NSW Department of Corrective Services

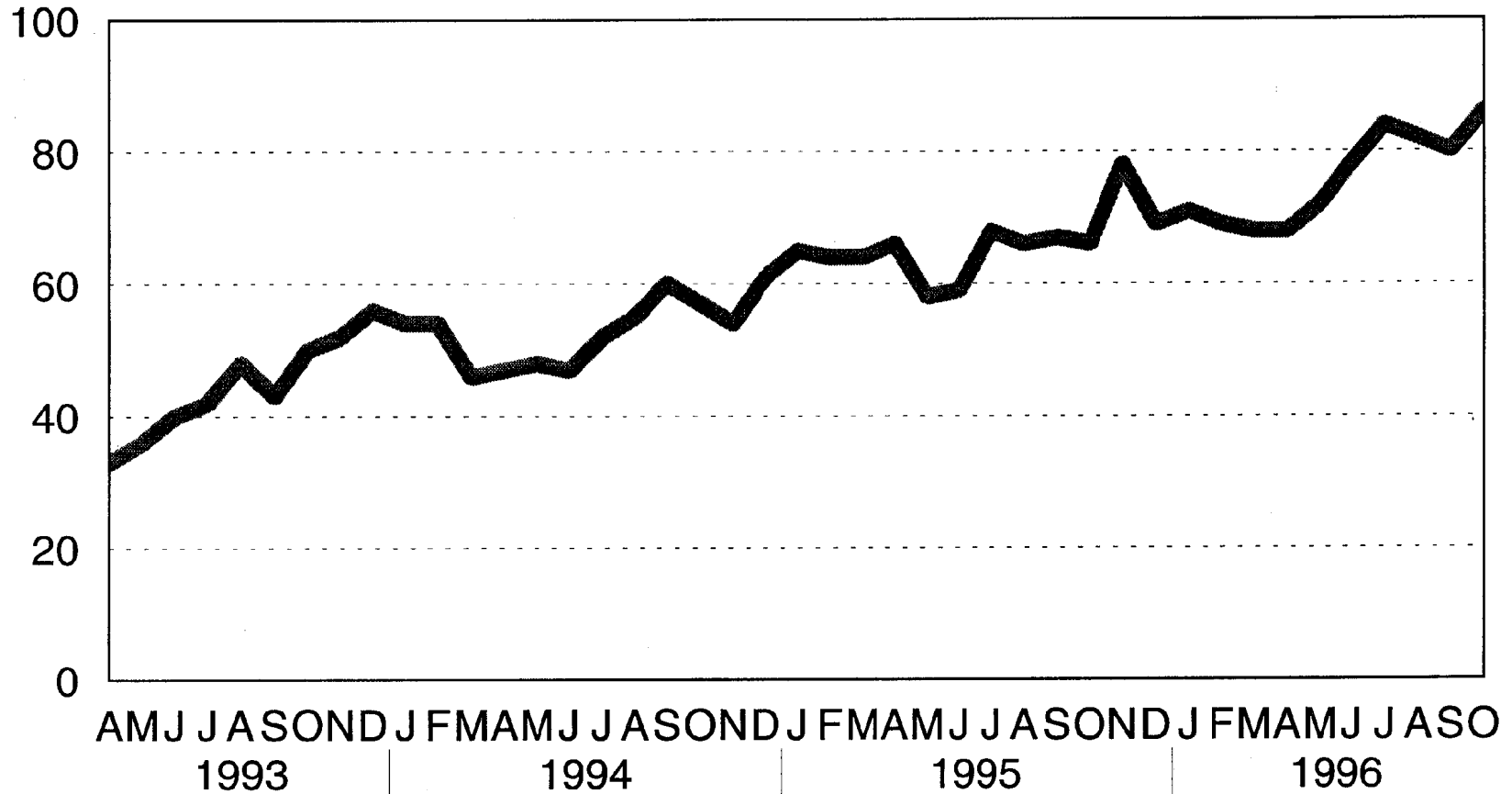
Female Aboriginals/TSI*: NSW Correctional Centres Full-time custody First Sunday of each month



* Self reported Aboriginality/TSI at reception.
Research & Statistics, NSW Department of Corrective Services

Aboriginal/TSI* Periodic Detainees: NSW Correctional Centres First Sunday of each month

Page: 32



* Self reported Aboriginality/TSI at reception.
Research & Statistics , NSW Department of Corrective Services

**ABORIGINAL/TORRES STRAIT ISLANDERS
MONTHLY STATISTICS AT FIRST SUNDAY OF THE MONTH
November, 1996**

Full-time custody	Males	Females
Reception and Induction Centre	36	-
Berrima Correctional Centre	2	-
Broken Hill Correctional Centre	25	-
Bathurst Correctional Centre	148	1
Cessnock Correctional Centre	55	-
Cooma Correctional Centre	8	-
Emu Plains Correctional Centre	-	22
Goulburn Correctional Centre	72	-
Glen Innes Correctional Centre	35	-
Grafton Correctional Centre	67	1
Junee Correctional Centre	46	-
Kirkconnell Correctional Centre	11	-
Long Bay DD Unit	1	-
Long Bay Hospital	10	-
Lithgow Correctional Centre	37	-
Maitland Correctional Centre	25	-
Malabar Fines Centre	6	-
Mannus Correctional Centre	20	-
St Heliers Correctional Centre	27	-
Mulawa Correctional Centre	-	40
Oberon Correctional Centre	9	-
Parklea Correctional Centre	29	-
Parramatta Correctional Centre	41	-
Remand Correctional Centre	51	-
Special Care Centre	7	-
Silverwater Correctional Centre	11	-
Tamworth Correctional Centre	24	-
Industrial Training Centre	37	-
Windsor Correctional Centre	22	-
TOTAL FULL-TIME CUSTODY	862	64
	926	

**ABORIGINAL/TORRES STRAIT ISLANDERS
MONTHLY STATISTICS AT FIRST SUNDAY OF THE MONTH
November, 1996**

Periodic Detention Centres	Males	Females
Administration Periodic Detention Centre (Mid-week)	-	-
Administration Periodic Detention Centre (Weekend)	-	-
Campbelltown Periodic Detention Centre (Mid-week)	9	-
Campbelltown Periodic Detention Centre	8	-
Emu Plains Periodic Detention Centre	-	7
Grafton Periodic Detention Centre	5	-
Malabar Periodic Detention Centre (Mid-week)	2	-
Malabar Periodic Detention Centre (Weekend)	6	-
St Heliers Periodic Detention Centre	1	-
Mannus Periodic Detention Centre	8	-
Parramatta Periodic Detention Centre	3	-
Silverwater Periodic Detention Centre (Mid-Week)	5	-
Silverwater Periodic Detention Centre (Weekend)	4	-
Tomago Periodic Detention Centre	9	-
Wollongong Periodic Detention Centre	11	-
Windsor Periodic Detention Centre	8	-
TOTAL P.D.C.	79	7
	86	

GRAND TOTAL	
Full-Time Custody	926
Periodic Detention Centres	86
	1,012

Total Inmate Population : Full-time: **6379** PDC: **1524** Total: **7903**

Aboriginal/Torres Strait Islanders as a percentage of the inmate population: **12.8 %**

Number of Aboriginal/TSI for previous month: Full-time: **902** PDC: **86** Total: **988**

NOTE: It should be noted that Correctional Centre records currently do not distinguish between Australian Aboriginals and Torres Strait Islanders. Consequently Torres Strait Islanders are included in the count for Aboriginal Inmates.

*****Research & Statistics Unit, NSW Department of Corrective Services*****

Australian Indigenous Inmate Population

Following is a table from the *National Correctional Statistics: Prisons* publication, a report prepared for the Corrective Services Ministers' Council by the National Correctional Services Statistics Unit, Australian Bureau of Statistics. The data incorporates information provided by each Australian state as part of a continuing *Monthly Prison Trends* series begun by the Australian Institute of Criminology.

The data for April 1995 - March 1996 show:

- ❑ The lowest indigenous inmate population figure for Australia was 2,853 in August 1995 (1,660.7 per adult indigenous population)
- ❑ The highest indigenous inmate population figure for Australia was 3,069 in March 1996 (1,786.4 per adult indigenous population)
- ❑ There has been an increase in the ratio of indigenous to the non-indigenous inmate population rate from 17.2:1 to 18.5:1 for Australia as a whole
- ❑ New South Wales has had the largest increase in the ratio of indigenous to non-indigenous inmate population rates (14.7 to 17.3)
- ❑ Western Australia continues to have the highest ratio of indigenous to non-indigenous inmate population (25:1)

The publication *The Over-Representation of Indigenous People in Custody in Australia*, Trends & Issues No. 47, by the Australian Institute of Criminology (1995) relates that "Nationally, Aboriginal people are in prison at 13 times the rate of non-Aboriginal people".

That publication showed the following breakdown of Indigenous Over-representation in Adult prisons for 1993: NSW 9.9, Victoria 15.6, Queensland 11.6, Western Australia 20.8, South Australia 21.4, Tasmania 3.3, Northern Territory 9.1, with a total for Australia of 13.2

	NSW ²	Vic.	Qld	SA	WA	Tas.	NT	ACT ²	Australia
NUMBER									
1995									
April	818	132	635	242	764	13	343	8	2 955
May	807	124	647	253	758	15	348	6	2 958
June	820	138	644	255	733	11	344	6	2 951
July	818	128	639	259	714	13	330	6	2 907
August	835	132	613	229	719	13	305	7	2 853
September	856	139	651	254	748	14	302	6	2 970
October	856	131	644	255	758	21	331	5	3 001
November	879	130	662	241	751	21	321	6	3 011
December	878	139	653	244	760	17	321	5	3 017
1996									
January	859	138	658	250	718	14	322	5	2 964
February	887	134	677	258	752	13	319	7	3 047
March	888	127	702	268	746	19	312	7	3 069
RATE PER 100,000 ADULT INDIGENOUS POPULATION									
1995									
April	1 791.9	1 195.4	1 409.6	2 290.1	2 908.9	230.5	1 291.0	786.6	1 720.0
May	1 767.8	1 123.0	1 436.2	2 394.2	2 886.1	266.0	1 309.8	590.0	1 721.8
June	1 796.2	1 249.8	1 429.6	2 413.2	2 790.9	195.0	1 294.7	590.0	1 717.7
July	1 791.9	1 159.2	1 418.5	2 451.0	2 718.6	230.5	1 242.0	590.0	1 692.1
August	1 829.1	1 195.4	1 360.7	2 167.1	2 737.6	230.5	1 148.0	688.3	1 660.7
September	1 875.1	1 258.8	1 445.1	2 403.7	2 848.0	248.2	1 136.7	590.0	1 728.8
October	1 875.1	1 186.4	1 429.6	2 413.2	2 886.1	372.3	1 245.8	491.6	1 746.8
November	1 925.5	1 177.3	1 469.5	2 280.7	2 859.4	372.3	1 208.2	590.0	1 752.6
December	1 923.3	1 258.8	1 449.5	2 309.1	2 893.7	301.4	1 208.2	491.6	1 756.1
1996									
January	1 881.7	1 249.8	1 460.6	2 365.9	2 733.8	248.2	1 211.9	491.6	1 725.3
February	1 943.0	1 213.5	1 502.8	2 441.6	2 863.2	230.5	1 200.6	688.3	1 773.6
March	1 945.2	1 150.2	1 558.3	2 536.2	2 840.4	336.9	1 174.3	688.3	1 786.4
RATIO OF INDIGENOUS TO NON-INDIGENOUS RATES OF IMPRISONMENT									
1995									
April	r15.0	17.6	15.3	22.3	25.5	3.2	8.0	r20.9	17.7
May	r14.7	16.7	15.7	23.3	25.1	4.0	8.4	r14.9	17.7
June	r14.9	18.5	15.4	23.6	23.6	2.9	8.4	r13.4	17.5
July	15.1	17.0	15.4	24.1	23.1	3.5	8.6	13.3	17.4
August	15.4	17.6	14.8	22.0	23.6	3.4	7.8	15.7	17.2
September	16.0	18.3	15.7	23.6	24.2	3.8	7.4	12.5	17.8
October	15.9	17.3	15.1	23.4	24.1	5.2	8.3	11.3	17.8
November	16.6	17.8	15.1	22.1	24.1	5.1	8.4	13.3	18.1
December	16.6	18.9	15.1	22.0	24.1	3.9	7.6	11.0	18.0
1996									
January	16.6	18.8	15.0	23.7	23.6	3.6	8.0	11.3	18.0
February	17.3	18.8	15.3	23.1	24.4	3.2	7.8	15.6	18.5
March	17.3	17.2	14.8	23.4	25.0	4.4	7.9	14.9	18.3

¹ Indigenous prisoner population figures are a count taken on or near the first day of the month.

² The number of Indigenous prisoners sentenced in the ACT and held in NSW prisons has been subtracted from the NSW figures and added to the ACT remand figures to provide total figures for the ACT.

Recidivism

The most comprehensive data relating to recidivism (return to custody) for NSW inmates is that contained in *Recidivism in NSW: General Study*, Thompson, Research Publication No 31, May 1995. Recidivism was defined as a return with a full-time conviction to NSW custody within two years of discharge.

Recidivism patterns are very complex with each variable of the model adopted adding increasing complexity to a picture that can not be simply explained by numbers alone. In many respects recidivism is not a direct measure of corrective services influence as the experiences and circumstances faced by an inmate once freed far outweigh anything that can be achieved whilst in custody.

In general, although overall recidivism for Aboriginal and Torres Strait Islander inmates was higher than that for non-Aboriginal and Torres Strait Islander inmates, especially for the first imprisonment group (45% Aboriginal and Torres Strait Islander vs 24% non-Aboriginal and Torres Strait Islander first imprisonment and 52% Aboriginal and Torres Strait Islander vs 42% non-Aboriginal and Torres Strait Islander for the repeat imprisonment group), this was mainly because a high proportion of Aboriginal and Torres Strait Islanders were in the high recidivism age and offence groups.

The tables presented are broken into the three offence groups where the most significant differences were found. Each table is further categorised by the other critical elements of age at entry and whether the inmate had been previously imprisoned.

Truth in Sentencing

The introduction of the NSW Sentencing Act (1989) had far reaching consequences for individuals sentenced to imprisonment in NSW. Information on the impact the introduction of this legislation on Aboriginal and Torres Strait Islander peoples has not been available to date. As part of an approved project to satisfy the requirements for a Master of Criminology degree, [See Eyland, (1995) *Truth in Sentencing: A koori Perspective*, University of Sydney] an examination of data on the sentencing profiles of inmates sentenced to full-time imprisonment with a special emphasis on Aboriginal and Torres Strait Islander people was completed.

The data consisted of records for 1832 inmates discharged prior to the introduction of the NSW Sentencing Act (1989) compared to 11,832 inmates sentenced after (received between October, 1989 and September, 1992).

The results found:

- Aboriginal and Torres Strait Islander people were 19 times more likely to be imprisoned in full-time custody in NSW than non-Aboriginal and Torres Strait Islander people
- the overall average minimum or fixed term handed down following the change in legislation (280 days) is significantly longer than the overall average served previously (244 days) $F_{1,13656}=23.04, p<.001$
- there was no significant difference in the average minimum or fixed term of imprisonment handed down to Aboriginal and Torres Strait Islander inmates following the change in legislation (223 days) compared to that served prior (198 days) $F_{1,1891}=1.15, p>.05$
- Aboriginal and Torres Strait Islander inmates were serving a significantly shorter average minimum or fixed term of imprisonment (223 days) than the non-Aboriginal and Torres Strait Islander inmates (293 days) following the change in legislation $F_{1,11567}=19.33, p<.001$
- there was no significant difference in the sentences handed down to Aboriginal and Torres Strait Islander inmates compared to non-Aboriginal and Torres Strait Islander inmates in the vast majority of offence categories
- there was very little difference in the ten most common individual offences that Aboriginal and Torres Strait Islander and non-Aboriginal and Torres Strait Islander inmates were imprisoned for except that of malicious damage which accounted for 2.6% of all Aboriginal and Torres Strait Islander sentenced

ABORIGINAL & TORRES STRAIT ISLANDER INMATES

Most Serious Offence was Assault

	Recidivism Rate	
	Aboriginal	Non-Aboriginal
Started sentence aged 18	78% (n=36)	53% (n=45)
Started sentence aged 19 or 20 No prior imprisonment	55% (n=64)	37% (n=106)
Started sentence aged 19 or 20 Had prior imprisonment	78% (n=40)	44% (n=45)
Started sentence aged 21 or 29 No prior imprisonment	30% (n=92)	19% (n=313)
Started sentence aged 21 or 29 Had prior imprisonment	58% (n=194)	45% (n=315)
Started sentence aged over 29 No prior imprisonment	14% (n=35)	14% (n=250)
Started sentence aged over 29 Had prior imprisonment	36% (n=72)	38% (n=259)
Total	50% (n=533)	31% (n=1,333)

Most Serious Offence was Stealing

	Recidivism Rate	
	Aboriginal	Non-Aboriginal
Started sentence aged 18	74% (n=73)	55% (n=240)
Started sentence aged 19 or 20 No prior imprisonment	51% (n=78)	42% (n=371)
Started sentence aged 19 or 20 Had prior imprisonment	68% (n=82)	66% (n=223)
Started sentence aged 21 or 29 No prior imprisonment	42% (n=79)	29% (n=571)
Started sentence aged 21 or 29 Had prior imprisonment	57% (n=206)	54% (n=1058)
Started sentence aged over 29 No prior imprisonment	29% (n=17)	26% (n=170)
Started sentence aged over 29 Had prior imprisonment	48% (n=61)	46% (n=596)
Total	56% (n=596)	46% (n=3229)

Most Serious Offence was a Driving Offence

	Recidivism Rate	
	Aboriginal	Non-Aboriginal
Started sentence aged 18, 19 or 20	50% (n=16)	33% (n=130)
Started sentence aged 21 - 29 No prior imprisonment	35% (n=34)	12% (n=357)
Started sentence aged 21 - 29 Had prior imprisonment	58% (n=72)	36% (n=330)
Started sentence aged over 29 No prior imprisonment	33% (n=15)	10% (n=318)
Started sentence aged over 29 Had prior imprisonment	38% (n=50)	25% (n=357)
Total	46% (n=187)	22% (n=1492)

ABORIGINAL & TORRES STRAIT ISLANDER INMATES

receptions

- ☐ a significantly higher proportion of Aboriginal and Torres Strait Islander inmates were received more than once in the period under study $X^2=167.39$, $df=5$, $p<.001$
- ☐ there were more Aboriginal and Torres Strait Islander inmates received into the assault category of offence than could be expected $X^2=456=24$, $df=18$, $p<.001$
- ☐ the Aboriginal and Torres Strait Islander inmates received were significantly younger than the non-Aboriginal and Torres Strait Islander inmates received $t_{11569}=15.73$, $p<.001$

ABORIGINAL & TORRES STRAIT ISLANDER INMATES

The table below categorises the most serious offence in terms of ANCO groupings.

ANCO	KOORIS		NON KOORIS	
	No.	%	No.	%
Homicide	17	1.0	97	1.0
Assaults	498	29.7	1291	13.0
Sex offences	36	2.1	391	4.0
Other against person	3	0.2	23	0.2
Robbery	37	2.2	268	2.7
Extortion	0	0	12	0.1
Break and Enter	255	15.2	1403	14.2
Fraud Misappropriation	26	1.6	488	4.9
Receiving	56	3.3	499	5.0
Other theft	259	15.5	1619	16.4
Property damage	51	3.0	184	1.9
Environment	0	0	14	0.1
Govt Security	0	0	10	0.1
Justice Procedure	158	9.4	968	9.8
Prostitution	5	0.3	16	0.2
Offensive behaviour	31	1.8	70	0.7
Unlawful weapon	6	0.4	42	0.4
Other good order	12	0.7	56	0.6
Possess/use drugs	14	0.8	181	1.8
Traffic drugs	24	1.4	636	6.4
Grow drugs	2	0.1	132	1.3
Driving	114	6.8	796	8.0
Licence rego	71	4.2	670	6.8
Other	1	0.1	29	0.3
TOTAL	1676	100.0	9895	100.0

Work previously conducted [see Cunneen 1992, ANZ Journal of Criminology, Vol 25, pp 186-191] has in the past shown large increases in the number of charges laid for offensive behaviour and offensive language. For example, the number of people charged with offensive behaviour increased from 2,808 in 1985 to 13,665 in 1990. However, a later study [See Eyland (1995)] showed that Aboriginal and Torres Strait Islander and non-Aboriginal and Torres Strait Islander people alike were not actually being imprisoned for these offences. During the 35 months of reception data analysed, only 31 (1.8%) Aboriginal and Torres Strait Islander and 70 (0.7%) non-Aboriginal and Torres Strait Islander people were imprisoned for offences contained in the Offensive Behaviour category.

ABORIGINAL & TORRES STRAIT ISLANDER INMATES

Most Serious Offence category	KOORI			NON KOORI			Results of ANCOVA
	Mean	No.	S.D.	Mean	No.	S.D.	
Homicide	1713.76	17	1473.96	1392.22	97	1372.83	N.S.
Assaults	172.69	498	182.98	200.24	1291	281.98	N.S.
Sex offences	765.56	36	590.42	861.18	391	671.98	N.S.
Other against person	670.33	3	380.07	1032.35	23	736.77	N.S.
Robbery	782.43	37	600.82	963.67	268	739.66	N.S.
Extortion	0	0	0	0	0	0	*
Break & enter	274.21	255	200.95	343.13	1403	305.01	$F_{1,1654}=8.12$, $P < .005$
Fraud & Misappropriation	206.58	26	202.80	279.90	488	318.92	N.S.
Receiving	173.96	56	160.83	200.65	499	230.98	N.S.
Other theft	194.72	259	193.04	199.23	1619	192.89	N.S.
Property damage	120.92	51	113.91	179.27	184	278.11	N.S.
Environment	0	0	0	180.07	14	237.66	*
Govt. security	0	0	0	447.30	10	397.49	*
Justice procedure	105.32	158	83.42	130.46	968	139.35	$F_{1,1122}=4.83$, $P < .030$
Prostitution	34.80	5	15.24	36.38	16	21.63	*
Offensive behaviour	81.77	31	122.86	73.33	70	74.82	N.S.
Unlawful weapon	291.17	6	238.13	341.45	42	317.73	N.S.
Other good order	130.67	12	76.02	182.55	56	200.28	N.S.
Possess use drug	112.93	14	66.71	120.87	181	122.46	N.S.
Traffic drug	306.00	24	295.58	559.57	636	790.94	N.S.
Grow drug	380.00	2	494.97	489.18	132	636.35	N.S.
Driving	158.50	114	83.92	146.75	796	85.37	N.S.
Licence rego	110.58	71	54.86	110.32	670	64.68	N.S.
Other	182.00	1	0	250.97	29	395.82	N.S.
OVERALL	223.00	1676	321.66	292.40	9895	441.77	$F_{1,11567}=19.33$, $P < .001$

Offence category by aboriginality (average minimum terms)

ABORIGINAL & TORRES STRAIT ISLANDER INMATES

Most Serious Offence	KOORIS			NON KOORIS			
	No.	%	Mean	No.	%	Mean	
Assault occasioning actual bodily harm	170	10.1	199.75	302	3.1	213.04	N.S.
Assault police officer	63	3.8	105.27	181	1.8	110.55	N.S.
Assault	171	10.2	109.44	418	4.2	122.08	N.S.
Break enter & steal	192	11.5	288.24	1030	10.4	369.92	Sig.
Steal motor vehicle	39	2.3	251.87	241	2.4	300.34	N.S.
Stealing	96	5.7	142.29	735	7.4	141.84	N.S.
Malicious damage	44	2.6	110.93	-	-	-	-
Breach of recog	39	2.3	135.36	233	2.4	139.49	N.S.
Drive High Range PCA	55	3.3	181.80	417	4.2	157.39	N.S.
Drive whilst disqualified	68	4.1	114.99	629	6.4	111.89	N.S.

The ten most common individual offences for koori prisoners received

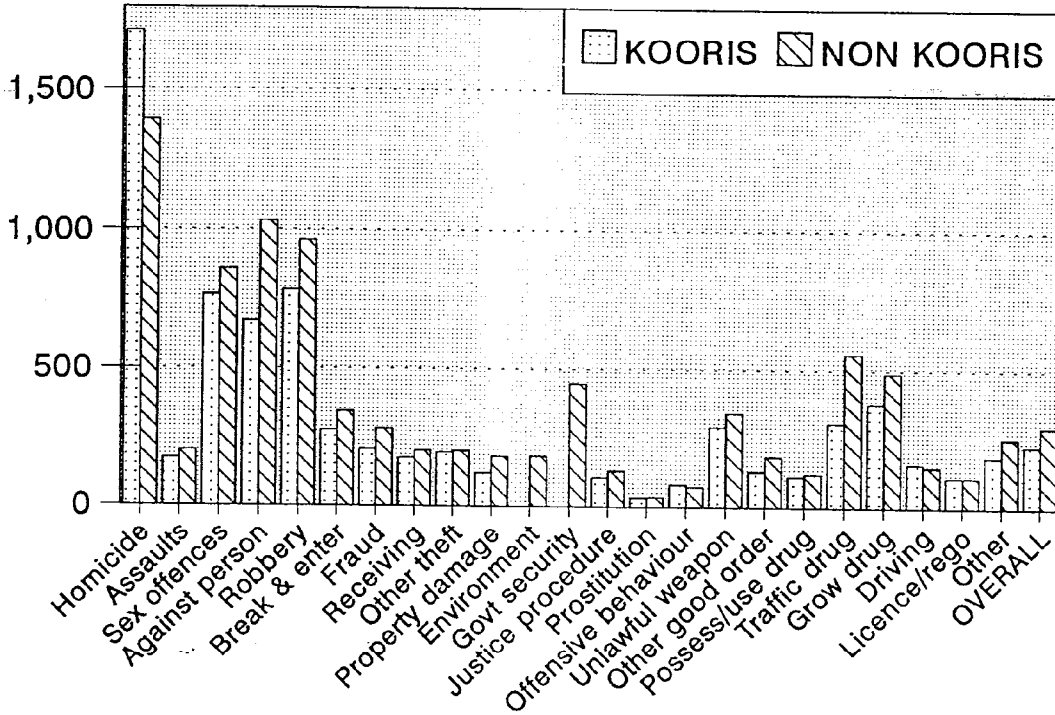
	Number of times received												Total
	1		2		3		4		5		6		
	No.	%	No.	%	No.	%	No.	%	No.	%	No.	%	
Koori	1040	62.1	501	29.9	123	7.3	12	0.7	-	-	-	-	1676
Non koori	7503	75.8	1797	18.2	462	4.7	68	0.7	35	0.4	30	0.3	9895
TOTAL	8543	73.8	2298	19.9	585	5.1	80	0.7	35	0.3	30	0.3	11571

Number of times received by aboriginality

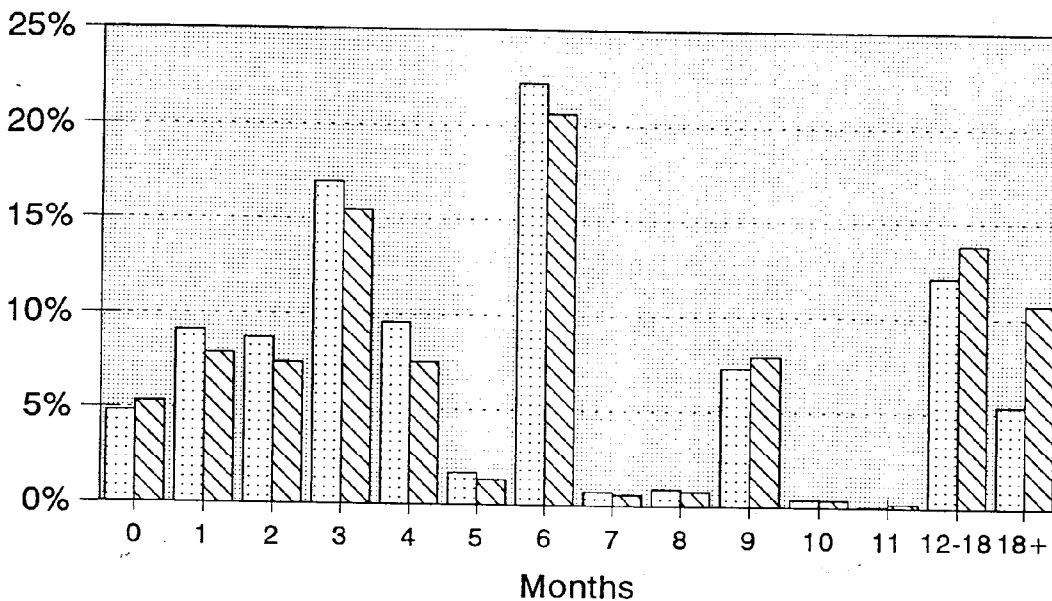
ABORIGINAL & TORRES STRAIT ISLANDER INMATES

INDIVIDUAL OFFENCES FOR ASSAULT CATEGORY	ABORIGINALITY AS STATED ON ENTRY			TOTAL
	Koori	Non koori	Unknown	
MSO				
CULPABLE DRIVING CAUSING GRIEVOUS BODILY HARM		12 .9%	1 2.3%	13 .7%
DRIVE DANGEROUSLY CAUSING GRIEVOUS BODILY HARM		1 .1%		1 .1%
CULPABLE DRIVING CAUSING ACTUAL BODILY HARM		3 .2%		3 .2%
DRIVE UNDER THE INFLUENCE CAUSING GRIEVOUS BODILY HARM		2 .2%		2 .1%
CULPABLE DRIVING	1 .2%	13 1.0%	1 2.3%	15 .8%
THREATEN GBH WITH INTENT TO HAVE SEXUAL INTERCOURSE		3 .2%		3 .2%
ADMINISTER DRUG WITH INTENT TO COMMIT A CRIME		3 .2%		3 .2%
BREAK ENTER AND INFLECT GRIEVOUS BODILY HARM		1 .1%		1 .1%
BREAK ENTER & STEAL & INFLECT GRIEVOUS BODILY HARM		1 .1%		1 .1%
INFLECT GRIEVOUS BODILY HARM		1 .1%	1 2.3%	2 .1%
MALICIOUS WOUNDING	26 5.2%	59 4.6%	1 2.3%	86 4.7%
THREATEN TO USE OFFENSIVE WEAPON WITH INTENT RESIST ARREST	1 .2%	1 .1%		2 .1%
USE OFFENSIVE WEAPON WITH INTENT TO RESIST ARREST		4 .3%		4 .2%
USE OFFENSIVE WEAPON WITH INTENT TO CAUSE HARM		1 .1%		1 .1%
WOUND WITH INTENT TO DO GRIEVOUS BODILY HARM		1 .1%		1 .1%
ATTEMPT TO INFLECT GRIEVOUS BODILY HARM		1 .1%		1 .1%
MALICIOUS WOUNDING INTENT CAUSE GRIEVOUS BODILY HARM (GBH)	1 .2%	4 .3%		5 .3%
MALICIOUSLY INFLECT GRIEVOUS BODILY HARM	6 1.2%	19 1.5%		25 1.4%
MALICIOUS WOUNING W/I TO PREVENT LAWFUL APPREHENSION	1 .2%			1 .1%
MALICIOUSLY INFLECT GBH WITH INTENT TO DO GBH		4 .3%		4 .2%
USE OFFENSIVE WEAPON TO PREVENT INVESTIGATION	1 .2%			1 .1%
MALICIOUSLY SHOOT AT WITH INTENT TO DO GBH		2 .2%		2 .1%
MALICIOUSLY ATTEMPT TO WOUND		1 .1%		1 .1%
ATTEMPT USE OFFENSIVE WEAPON W/I PREVENT LAWFUL APPREHENSION		1 .1%		1 .1%
USE INSTRUMENT WITH INTENT TO PREVENT APPREHENSION		1 .1%		1 .1%
THREATEN ABH INTENT TO HAVE SEXUAL INT WITH THIRD PERSON		1 .1%		1 .1%
ADMINISTER POISON WITH INTENT TO POISON - INJURE		1 .1%		1 .1%
ASSAULT OCCASIONING ACTUAL BODILY HARM	170 34.1%	302 23.4%	11 25.6%	483 26.4%
ASSAULT BEAT AND ILLTREAT	19 3.8%	89 6.9%	3 7.0%	111 6.1%
BY MISCONDUCT CAUSE ACTUAL BODILY HARM		1 .1%		1 .1%
ASSAULT & ILLTREAT	3 .6%	24 1.9%		27 1.5%
ASSAULT BEAT ILLTREAT OCCASIONING ABH	3 .6%	6 .5%	2 4.7%	11 .6%
BEAT AND OTHERWISE ILLTREAT	1 .2%			1 .1%
BREAK ENTER AND ASSAULT OCCASIONING ACTUAL BODILY HARM		1 .1%		1 .1%
ASSAULT OCCASIONING GREVIOUS BODILY HARM		5 .4%		5 .3%
CAUSE GREVIOUS BODILY HARM WITH INTENT GREVIOUS BODILY HARM		1 .1%		1 .1%
BEING ARMED ENTER DWELLING & AOABH		1 .1%		1 .1%
ANNOY OR INTIMIDATE BY VIOLENCE OR OTHERWISE	1 .2%	1 .1%		2 .1%
ASSAULT CHILD		3 .2%		3 .2%
APPREHENDED DOMESTIC VIOLENCE	5 1.0%	9 .7%		14 .8%
ASSAULT FEMALE	8 1.6%	25 1.9%		33 1.8%
ASSAULT - DOMESTIC VIOLENCE	1 .2%	5 .4%		6 .3%
ASSAULT OFFICER WHILST IN THE EXECUTION OF HIS DUTY		8 .6%		8 .4%
CONSPIRE TO ASSAULT		1 .1%		1 .1%
INDICTABLE ASSAULT SECTION 61 CRIMES ACT	1 .2%			1 .1%
UNLAWFUL ASSAULT	1 .2%	2 .2%		3 .2%
ASSAULT WITH INTENT TO RESIST OR PREVENT APPREHENSION	1 .2%			1 .1%
COMMON ASSAULT	4 .8%	41 3.2%	1 2.3%	46 2.5%
THREATEN INJURY TO PERSON WITH INTENT TO RESIST ARREST	1 .2%	1 .1%		2 .1%

Average minimum terms



Minimum terms Aboriginality

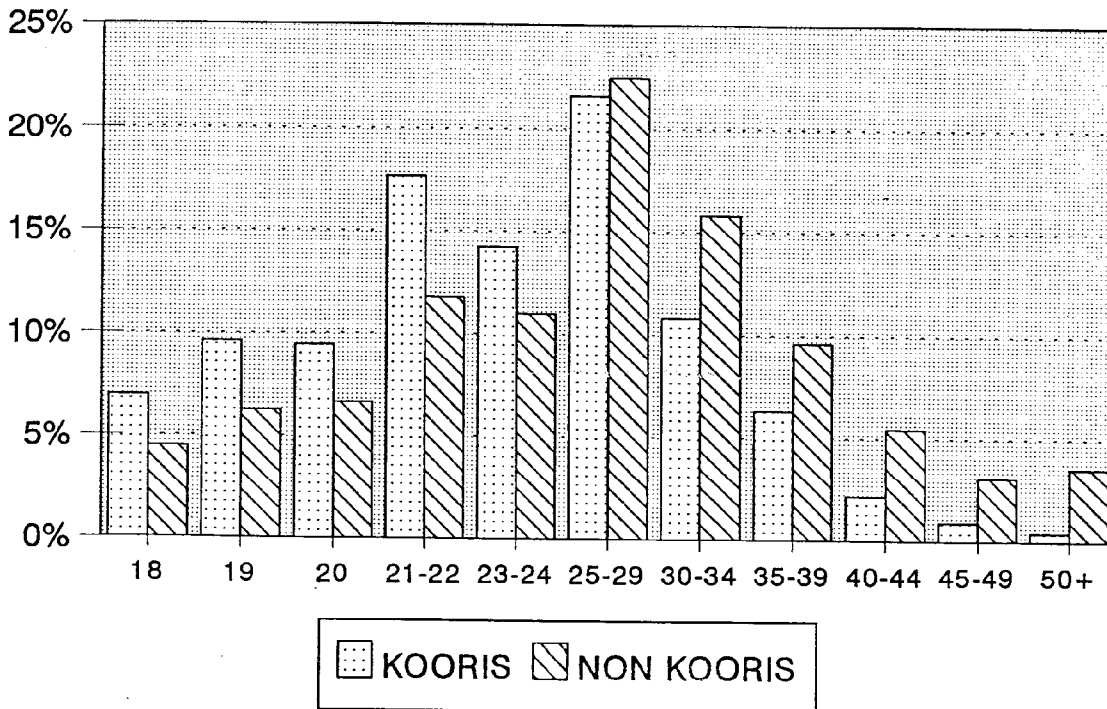


ABORIGINAL & TORRES STRAIT ISLANDER INMATES

INDIVIDUAL OFFENCES FOR ASSAULT CATEGORY	ABORIGINALITY AS STATED ON ENTRY						TOTAL
	Koori		Non koori		Unknown		
WATCH & BESET UPON A PERSON			1	.1%			1 .1%
ASSAULT POLICE OFFICER	63	12.7%	181	14.0%	5	11.6%	249 13.6%
INCITE PERSON TO COMMIT ASSAULT	1	.2%					1 .1%
ASSAULT	171	34.3%	418	32.4%	17	39.5%	606 33.1%
UNLAWFULLY ASSAULT POLICE OFFICER			1	.1%			1 .1%
ASSAULT PRISON OFFICER	2	.4%	2	.2%			4 .2%
INDICTABLE ASSAULT	3	.6%	13	1.0%			16 .9%
AID & ABET ASSAULT & ROBBERY			1	.1%			1 .1%
ASSAULT SPECIAL CONSTABLE			1	.1%			1 .1%
THREATEN INJURY TO PREVENT INVESTIGATION			1	.1%			1 .1%
AID AND ABET ASSAULT OCCASIONING ACTUAL BODILY HARM			1	.1%			1 .1%
ACCESSORY AFTER FACT ASSAULT OCCASIONING ACTUAL BODILY HARM			1	.1%			1 .1%
ASSAULT AND ATTEMPT ROB (ROBBERY)	2	.4%	3	.2%			5 .3%
TOTAL	498	100.0%	1291	100.0%	43	100.0%	1832 100.0%

AGE

Aboriginality



Time Served, NSW Inmates 1993

As part of the continuing work being conducted by the Research and Statistics Unit into recidivism patterns of inmates, the Research Statistician, B Thompson has been able to supply information for those inmates discharged in 1993 and the time they had served in custody up to that discharge. This information builds on that previously discussed in the Truth In Sentencing and Recidivism sections.

- A total of 4812 inmates, 4472 males and 340 females were discharged in 1993 after completing a sentence of full-time custody.
- Of the 4812 discharged in 1993, 702 male inmates (16%) and 76 female inmates (22%) self-identified themselves as Aboriginal and Torres Strait Islander.

Offence categories

- The most common "Most Serious Offence" *categories* for Aboriginal and Torres Strait Islander male inmates were the assault (29%) and property (33%) categories.
- In contrast, whilst non Aboriginal and Torres Strait Islander male inmates had an equally high concentration in the property category (32%), the assault category contained less than half the proportion of non Aboriginal and Torres Strait Islander male inmates than that for Aboriginal and Torres Strait Islander male inmates (13% non Aboriginal and Torres Strait Islander vs 29% Aboriginal and Torres Strait Islander male inmates).
- The drug offence category for non Aboriginal and Torres Strait Islander male inmates could be seen to account for the majority of this difference - 12% non Aboriginal and Torres Strait Islander vs 2% Aboriginal and Torres Strait Islander. However, Aboriginal and Torres Strait Islander males were also quite unlikely to have served time for a homicide offence.
- As with the males, the female inmates shared the property category of offence as the most common, 47% Aboriginal and Torres Strait Islander and 39% non Aboriginal and Torres Strait Islander. Likewise, female Aboriginal and Torres

ABORIGINAL & TORRES STRAIT ISLANDER INMATES

Strait Islander inmates were more likely than non Aboriginal and Torres Strait Islander female inmates to have served time for an assault category offence - 15% Aboriginal and Torres Strait Islander vs 8% non Aboriginal and Torres Strait Islander.

- In contrast to the male non Aboriginal and Torres Strait Islander inmates, a higher proportion of female non Aboriginal and Torres Strait Islander inmates served time for a fraud offence (18% females vs 5% males).
- This propensity for a fraud category offence was not shared by the female Aboriginal and Torres Strait Islander inmates who had a proportion less than half that for non Aboriginal and Torres Strait Islander females - 7% Aboriginal and Torres Strait Islander vs 18% non Aboriginal and Torres Strait Islander females.
- Female Aboriginal and Torres Strait Islander inmates were more likely to have served time for a drug category offence than the male Aboriginal and Torres Strait Islander inmates (9% female Aboriginal and Torres Strait Islander vs 2% male Aboriginal and Torres Strait Islander), although caution should be exercised as the number of female inmates is low overall.

ABORIGINAL & TORRES STRAIT ISLANDER INMATES

Most Serious Offence by Aboriginality - Male Inmates Only

Most Serious Offence	Aboriginality				Total	
	Non Aboriginal and Torres Strait Islander		Aboriginal and Torres Strait Islander		Number	%
	Number	%	Number	%		
Homicide	37	1.0	3	0.4	40	0.9
Assault	496	13.2	206	29.3	702	15.7
Sexual	148	3.9	26	3.7	174	3.9
Robbery	207	5.5	32	4.6	239	5.3
Fraud	190	5.0	13	1.9	203	4.5
Property	1217	32.3	233	33.2	1450	32.4
Driving	460	12.2	73	10.4	533	11.9
BOP	132	3.5	26	3.7	158	3.5
Drugs	448	11.9	13	1.9	461	10.3
Other	435	11.5	77	11.0	512	11.4
TOTAL	3770	100.0	702	100.0	4472	100.0

Most Serious Offence by Aboriginality - Female Inmates Only

Most Serious Offence	Aboriginality				Total	
	Non Aboriginal and Torres Strait Islander		Aboriginal and Torres Strait Islander		Number	%
	Number	%	Number	%		
Homicide	4	1.5			4	1.2
Assault	21	8.0	11	14.5	32	9.4
Sexual						
Robbery	13	4.9	4	5.3	17	5.0
Fraud	47	17.8	5	6.6	52	15.3
Property	102	38.6	36	47.4	138	40.6
Driving	5	1.9	3	3.9	8	2.4
BOP	8	3.0	2	2.6	10	2.9
Drugs	42	15.9	7	9.2	49	14.4
Other	22	8.3	8	10.5	30	8.8
TOTAL	264	100.0	76	100.0	340	100.0

ABORIGINAL & TORRES STRAIT ISLANDER INMATES

Specific Offences

- For both Aboriginal and Torres Strait Islander and non Aboriginal and Torres Strait Islander male inmates, the most common individual offence was “Break, Enter and Steal” (contained within the property category) - 15% Aboriginal and Torres Strait Islander vs 12% non Aboriginal and Torres Strait Islander.

- As reflected in the high concentrations of male Aboriginal and Torres Strait Islander inmates in the assault offence category, the two next highest specific offences for which male Aboriginal and Torres Strait Islander inmates had served time for were “Assault Occasioning Actual Bodily Harm” (11%) and “Assault” (11%). Both of these specific offences contained proportions of Aboriginal and Torres Strait Islander male inmates more than double that for non Aboriginal and Torres Strait Islander male inmates (4%).

- As with the males, both Aboriginal and Torres Strait Islander and non Aboriginal and Torres Strait Islander female inmates had commonly served time for “Break, Enter and Steal” (17% Aboriginal and Torres Strait Islander vs 10% non Aboriginal and Torres Strait Islander).

- The second most common offence for female Aboriginal and Torres Strait Islander inmates was “Steal” (15%) which matched with the non Aboriginal and Torres Strait Islander female proportion (15%).

- Whereas for Aboriginal and Torres Strait Islander females “Assault” was the third most common specific offence (8%), for non Aboriginal and Torres Strait Islander female inmates the next two most common offences were “Supply prohibited drug” (10%) and “Dishonestly obtain benefit by deception” (8%).

ABORIGINAL & TORRES STRAIT ISLANDER INMATES

Specific Offences ranked in order of most common male Aboriginal and Torres Strait Islander offences
(percent is that for total number of discharges for 1993)

Offence	Aboriginal and Torres Strait Islander		NON Aboriginal and Torres Strait Islander	
	Males	Females	Males	Females
Break, Enter & Steal	106 (15%)	13 (17%)	459 (12%)	26 (10%)
Assault Occasioning Actual Bodily Harm	78 (11%)		152 (4%)	
Assault	75 (11%)	6 (8%)	151 (4%)	
Drive High Range PCA	29 (4%)		122 (3%)	
Steal Motor Vehicle	26 (4%)		121 (3%)	
Drive Whilst Disqualified	23 (3%)		174 (5%)	
Steal	22 (3%)	11 (15%)	158 (4%)	37 (14%)
Supply Prohibited Drug				26 (10%)
Dishonestly Obtain Benefit by Deception				21 (8%)

ABORIGINAL & TORRES STRAIT ISLANDER INMATES

Time Served

Using categories of time served in which the numbers are grouped to give the maximum size per grouping, it can be seen from the table below that Aboriginal and Torres Strait Islander inmates are less likely to have served over two years and are more likely to have served less than one year.

Time Served	Non Aboriginal and Torres Strait Islander		Aboriginal and Torres Strait Islander	
	Number	%	Number	%
Less than 3 months	1119	82.9	231	17.1
3 to 6 months	780	80.4	190	19.6
6 to 12 months	1020	83.7	198	16.3
12 months to 2 years	483	86.3	77	13.8
Over 2 Years	632	88.5	82	11.5
Total	4034	83.8	778	16.2

- Time served is directly related to the type of offences for which an individual is convicted. As shown previously, Aboriginal and Torres Strait Islander inmates are less likely to have served time for homicide and drug offences which traditionally attract very long sentences. This is reflected in the average times served of 9 months for Aboriginal and Torres Strait Islander inmates and 12 months for non Aboriginal and Torres Strait Islander inmates.
- A large proportion of all inmates had relatively short periods of time served. In percentage terms, 54% on non Aboriginal and Torres Strait Islander inmates and 62% of Aboriginal and Torres Strait Islander inmates had served 6 months or less in custody at discharge.

Age at start of sentence

- Aboriginal and Torres Strait Islander inmates were more likely to be aged under 25 years than non Aboriginal and Torres Strait Islander inmates. The average age for Aboriginal and Torres Strait Islander inmates was 26 years and for non Aboriginal and Torres Strait Islander inmates 30 years.

Age	Non Aboriginal and Torres Strait Islander		Aboriginal and Torres Strait Islander	
	Number	%	Number	%
18-20	594	14.7	195	25.1
21-24	873	21.6	222	28.5
25-29	886	22.0	183	23.5
30-39	1158	28.7	137	17.6
40 and over	523	13.0	41	5.3
Total	4034	100.0	778	100.0

- These age differences are again probably related to the type of offences committed with assault category offences being more typically associated with a younger person.

ABORIGINAL & TORRES STRAIT ISLANDER INMATES

Security Classification at discharge

- Security classification at discharge is related to time served. For inmates serving up to one year, few would be discharged as a C3 inmate (the lowest security rating available) as they would not have had time to work their way down through the security levels. Also, at that time, few inmates would have been classified as C3 at the beginning of their sentence as can be the case now.
- A C3 security rating has important consequences for the inmate as it is only when the inmate has reached such a security level that they can participate in various pre-release programs like Work Release, Day and Weekend leave.
- Fewer Aboriginal and Torres Strait Islander inmates were discharged as C3 (lowest security rating) than non Aboriginal and Torres Strait Islander inmates.

Classification at Discharge - All inmates

Security Rating	Non Aboriginal and Torres Strait Islander		Aboriginal and Torres Strait Islander	
	Number	%	Number	%
A1	5	0.1	3	0.4
A2	46	1.1	14	1.8
B	473	11.7	87	11.2
C1	600	14.9	111	14.3
C2	2082	51.6	470	60.4
C3	676	16.8	61	7.8
E1	14	0.3	8	1.0
E2	110	2.7	21	2.7
Other	28	0.7	3	0.4
Total	4034	100.0	778	100.0

ABORIGINAL & TORRES STRAIT ISLANDER INMATES

- Further analysis showed that this was true even when selecting only those inmates who had served two or more years in custody. For these longer term inmates, only 27% of Aboriginal and Torres Strait Islander inmates were discharged as C3 compared to 44% for non Aboriginal and Torres Strait Islander inmates.

Classification at Discharge - Only Inmates who served 2 years or more

Security Rating	Non Aboriginal and Torres Strait Islander		Aboriginal and Torres Strait Islander	
	Number	%	Number	%
A1	2	0.3	1	1.2
A2	9	1.4	4	4.9
B	98	15.5	15	18.3
C1	92	14.6	12	14.6
C2	126	19.9	23	28.0
C3	276	43.7	22	26.8
E1	1	0.2	3	3.7
E2	27	4.3	2	2.4
Other	1	0.2	-	-
Total	632	100.0	82	100.0

ABORIGINAL & TORRES STRAIT ISLANDER INMATES

New convictions, 1990-1995

The data set consisted of all inmates starting an episode of imprisonment between 1990 and 1995.

- The percentage of Aboriginal and Torres Strait Islander inmates has markedly increased over the last six years for the following four offence categories:

	1990	1995
Assault	30%	35%
Robbery	11%	16%
Driving	12%	20%
Good Order	15%	21%

NSW Correctional Centre Deaths

Deaths remain a quite exceptional event in NSW Correctional Centres when the large number of sentenced inmates received in any given year is considered - 11,130 in 1995/96

- ☐ The total number of deaths in NSW Correctional Centres has remained fairly low and constant for the last four years
- ☐ Although NSW often has the highest number of Deaths in Custody, this has more to do with it also having the highest number of inmates in custody. In Death Rate terms (Number of Deaths/Daily Average Number of Inmates X 100) for 1995, NSW ranked third highest in Australia. Data drawn from *Deaths in Custody Australia*, No 12, 1995, Australian Institute of Criminology, and *National Correctional Statistics: Prisons*, Issue 3, Australian Bureau of Statistics.

State	Daily Average June 1995	Number of Deaths	Death rate
South Australia	1392	11	0.79
Queensland	2848	12	0.42
Tasmania	240	1	0.42
New South Wales	6412	22	0.34
Victoria	2458	6	0.24
Western Australia	2213	5	0.23
Northern Territory	473	1	0.21
ACT	103	-	-
Australia	16059	58	0.36

- ☐ The total number of Aboriginal and Torres Strait Islander inmates who have died in NSW Correctional Centres since January, 1980 [the starting date for the Royal Commission into Aboriginal Deaths in Custody] is 30
- ☐ Aboriginal and Torres Strait Islander inmate deaths represent 12.5% of all deaths in custody since January, 1980. Aboriginal and Torres Strait Islander inmates comprised 14.4% of the total inmate population as at 6 October, 1996

**Deaths in N.S.W. Correctional Centres by calendar year
January 1978 to Present**

** Cause of Death							
Year	Natural Causes	Suicide	Murder	Other	Unknown (Coroner unable to determine if suicide)	Unknown (Coroner yet to determine cause of death)	Total
1978	6	5	-	1	-	-	12
1979	7	4	1	-	-	-	12
1980	6	1	-	-	-	-	7
1981	2	4	3	-	-	-	9
1982	1	2	1	-	-	-	4
1983	-	9	1	2	-	-	12
1984	3	5	1	1	-	-	10
1985	2	6	1	-	-	-	9
1986	3	4	1	-	-	-	8
1987	3	10	2	1	2	-	18
1988	4	5	-	1	-	-	10
1989	7	11	-	2	-	-	20
1990	6	9	-	-	-	-	15
1991	9	5	-	1	-	-	15
1992	3	7	-	3	-	-	13
1993	10	8	-	4	1	-	23
1994	11	8	3	4	-	1	27
1995	4	6	2	7	-	3	22
1996	7	4	1	1	-	6	19
Total	94	113	17	28	3	10	265

** Cause of death is subject to Coroner's Inquiry.

**Aboriginal Deaths in N.S.W. Correctional Centres by calendar year
January 1980 to Present****

* Cause of Death						
Year	Natural Causes	Suicide	Murder	Other	Not Known	Total
1980	-	1	-	-	-	1
1981	-	-	-	-	-	0
1982	-	-	-	-	-	0
1983	-	2	-	-	-	2
1984	1	-	-	-	-	1
1985	-	-	-	-	-	0
1986	-	-	-	-	-	0
1987	-	1	-	-	-	1
1988	1	-	-	-	-	1
1989	1	2	-	-	-	3
1990	1	1	-	-	-	2
1991	2	1	-	-	-	3
1992	1	-	-	-	-	1
1993	4	-	-	-	-	4
1994	1	2	-	-	-	3
1995	3	-	-	2 ^{(1), (2)}	-	5
1996	1	1	1	-	-	3
Total	16	11	1	2	0	30

* Cause of death is subject to Coroner's Inquiry.

- (1) Hanging - Coroner found death by misadventure (1/3/95).
- (2) Died as a result of head injuries received during a fight at Goulburn C.C. on 16.11.95. (23/11/95).